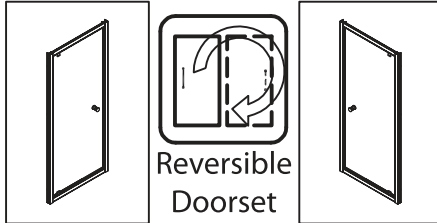


# INSTALLATION INSTRUCTIONS



## SHOWER | SAPPHIRE® PIVOT DOOR



900 x 900  
1000 x 100  
1200 x 900  
1200 x 1000



## BEFORE YOU BEGIN

Before installing the shower please read these instructions carefully to familiarise yourself with the required tools, materials and installation sequences. Please leave these instructions for the consumer after installation.

Refer to the separate care and maintenance guide for important care and cleaning information/.

Ensure that the shower tray and wall, if applicable, are completely finished prior to installing your shower door and return. Follow all warnings, cautions and instructions contained in this guide.



### SAFETY

1. ENGLEFIELD strongly recommended that a minimum of TWO persons install this enclosure due to the weight of the door panels.
2. Toughened safety glass cannot be cut. Risk of injury or product damage.
3. Wear protective footwear when lifting panels.
4. Wear safety glasses when drilling.

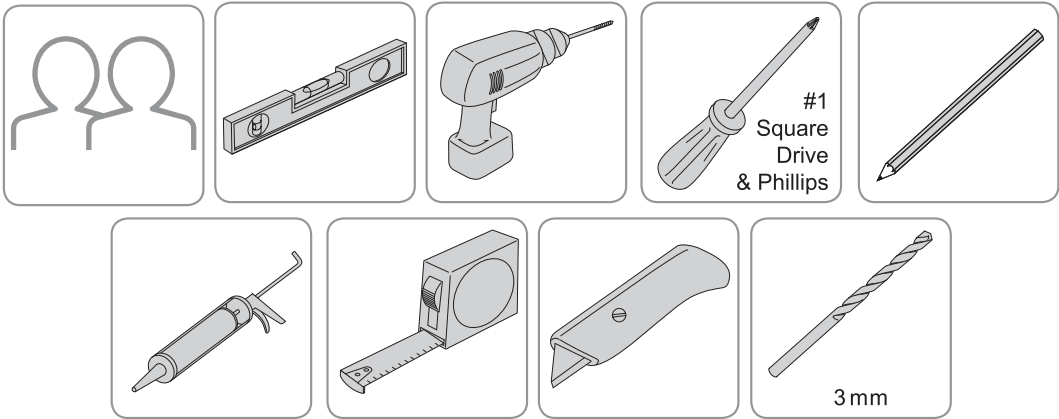


### ATTENTION

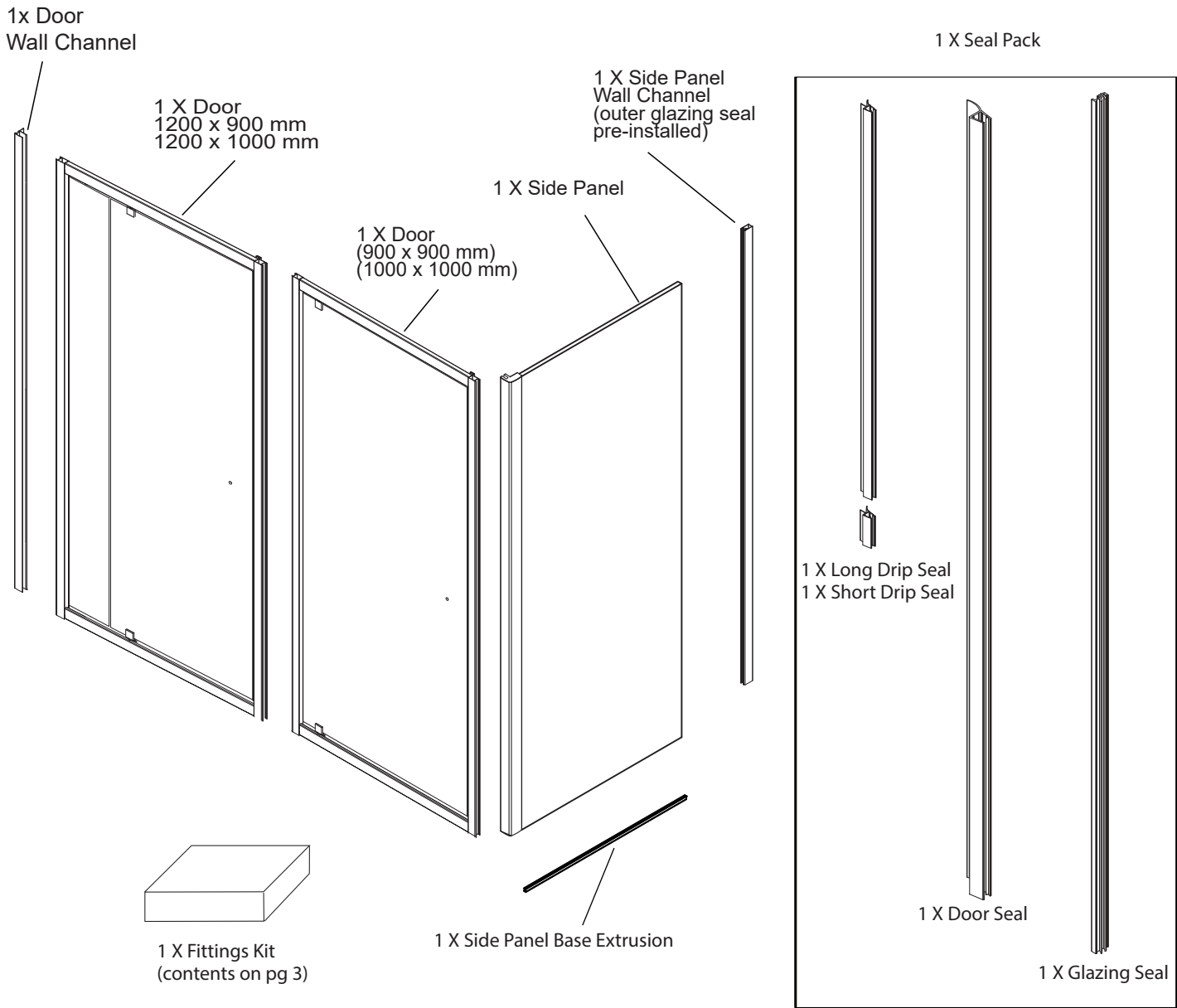
1. The wall retainers must be installed onto a waterproof, vertical and flat wall surface. Failure to do so will result in an unsatisfactory seal, which may cause property damage. The wall inclination (out of squareness) is recommended to be out by no more than **+/- 4 mm/m**.
2. Please install this door onto an ENGLEFIELD Quick-Fit® Low Profile shower tray only, unless installing directly onto tiled walls and floor.
3. Care must be taken when drilling into walls and floors to avoid any hidden pipes or wires.
4. It is the responsibility of the INSTALLER to ensure that the installation complies with council and or local authority bylaws.

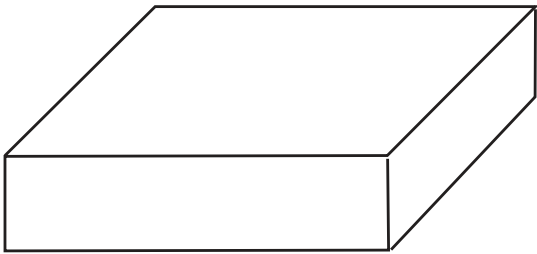
Instructions, drawings, and diagrams contained in this manual present information available at the time of printing. Although every attempt has been made to keep them up-to-date, Englefield reserves the right to implement product changes without further notice.

TOOLS AND MATERIALS REQUIRED





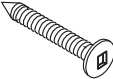
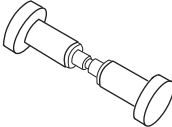
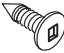





PARTS IDENTIFICATION





1x Fixing Kits

	8X Wall plugs		4X Screw washer for side panel
	10X Screw washer		2X Screw cap
 ST4 X 30	8X Fixing screws		1X Handle assembly
 ST4 X 10	10X Screws		10X Screw cap
 4 MM	1X Hex Key		2X Seal for pivot bracket

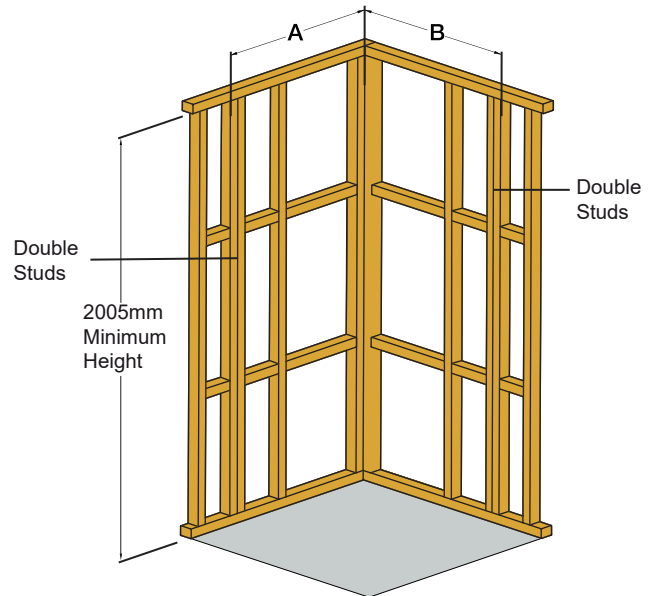
## CONSTRUCTION REQUIREMENTS



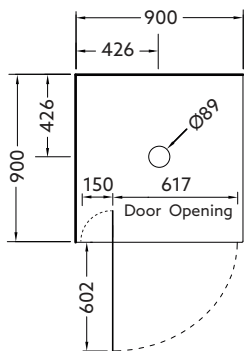
## ATTENTION

Due to the weight of the glass panels Englefield strongly recommends constructing double studs (as below) to fix the wall retainers to.

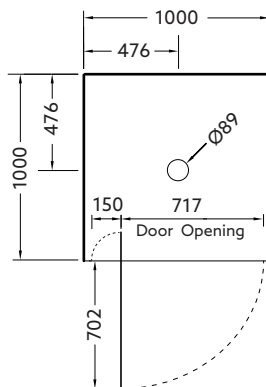
Size	DIM "A"	DIM "B"
900 x 900	900	900
1000 x 1000	1000	1000
1200 x 900	900	1200
1200 x 1000	1000	1200



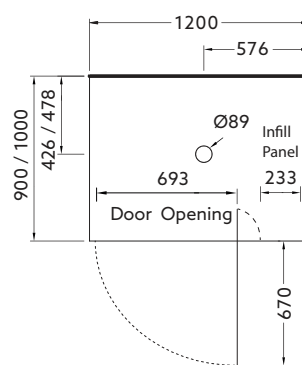
**Square Pivot  
900 x 900**



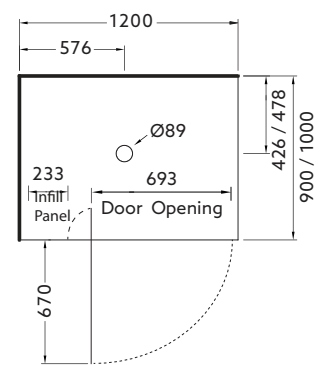
**Square Pivot  
1000 x 1000**



**Corner Pivot  
1200 x 900, 1200 x 1000  
Left Hand**



**Corner Pivot  
1200 x 900, 1200 x 1000  
Right Hand**



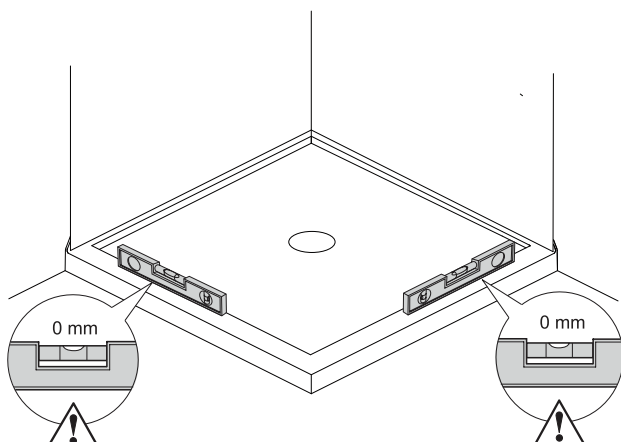
Nominal Size	900 x 900	1000 x 1000	1200 x 900 Right and Left Hand	1200 x 1000 Right and Left Hand
Door Adjustment Range	864-884 mm	964-984 mm	1164-1184 mm	1164-1184 mm
Return Adjustment Range	864-884 mm	964-984 mm	864-884 mm	964-984 mm

## INSTALLATION REQUIREMENTS

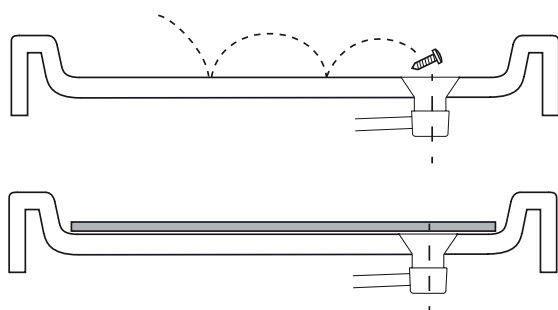
**Tray:** For tray installation refer to the instructions supplied with the tray.

**Wall:** For wall installation refer to the instructions supplied with the wall.

## INSTALLATION

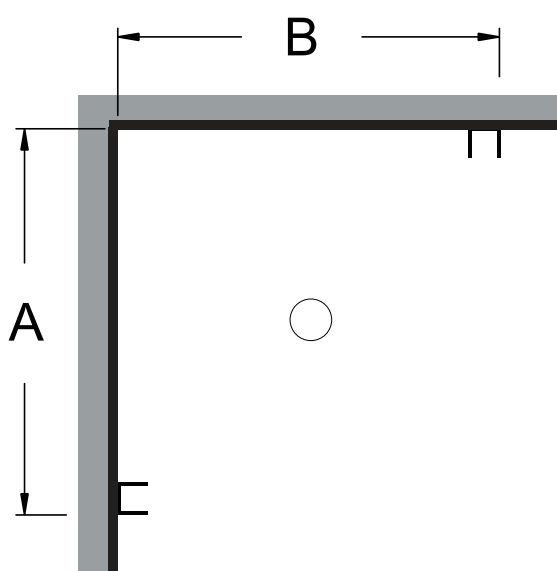


**Caution:** Ensure tray or tiled floor is level & walls are vertical & square.

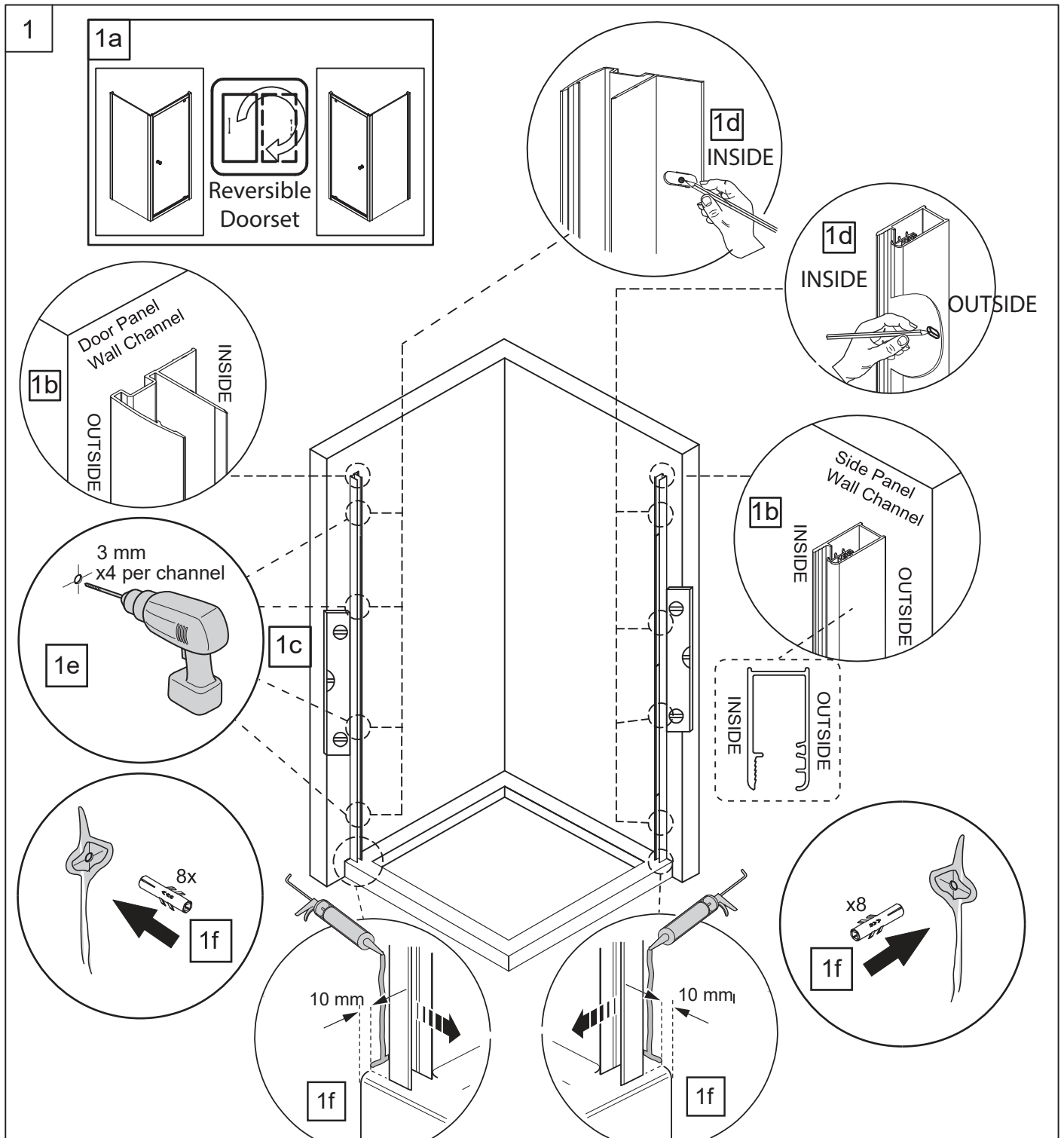


**Tip:** Cover the waste to prevent the loss of small parts. If installing onto a tray protect the tray surface during installation.

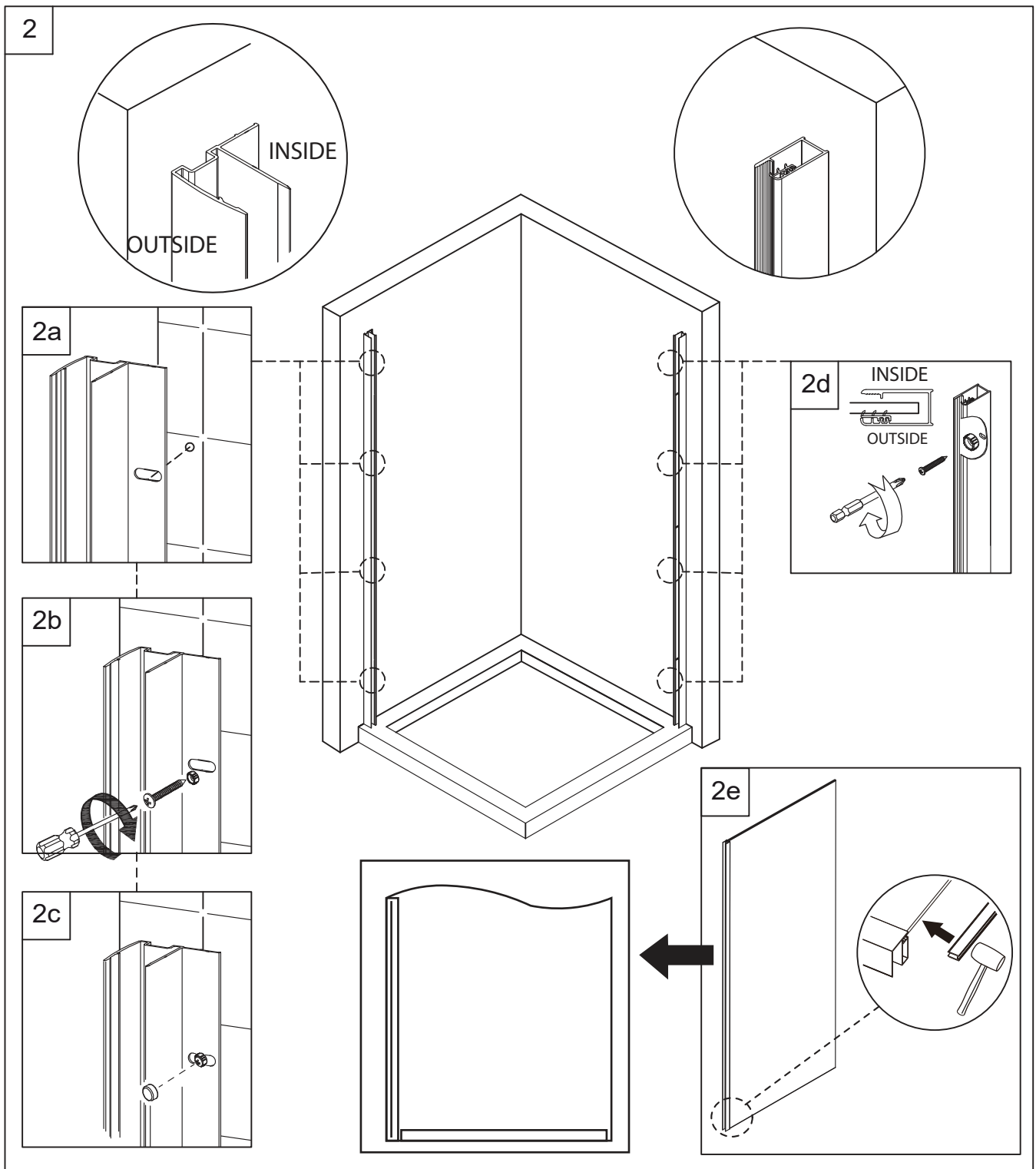
- (a)** Mark the locations of the wall retainers.
- Mark from **“finished wall surface”** to outer edge of retainer.



Size	A	B
900 x 900	874	874
1000 x 1000	974	974
1200 x 900 LH	1174	874
1200 x 900 RH	874	1174



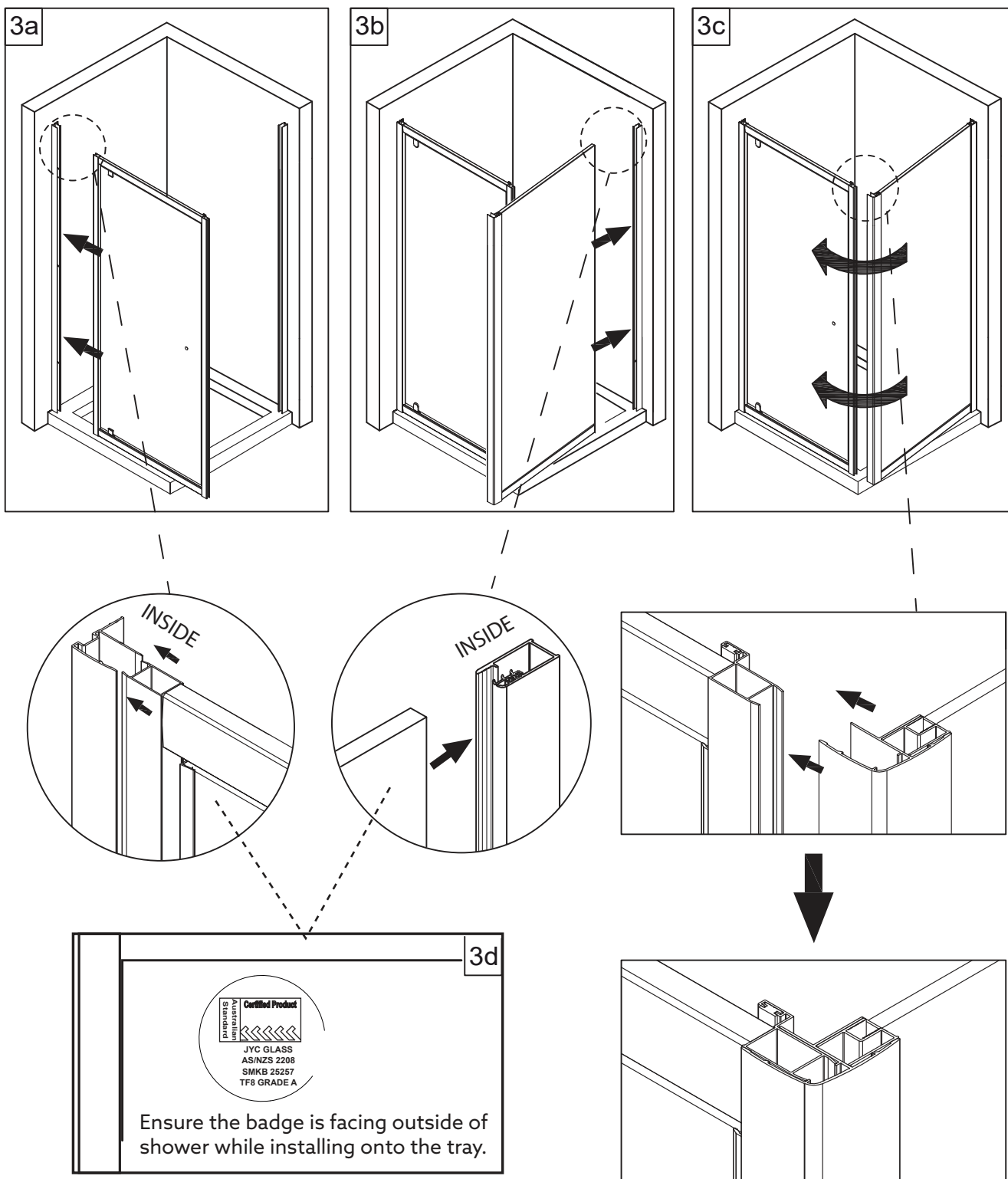
- (a) This enclosure is reversible. Select which side the door panel will be on.
- (b) Note the different wall channel profiles for the door & side panel. Orient accordingly.
- (c) Place the wall channels up, 10 mm in from tray edge. Using a level, make sure that the channels are upright.
- (d) Mark the position of the fixing holes then remove the channels.
- (e) Drill all holes with a 3 mm bit. For other types of wall structure, alternative fixings may be required (not supplied).
- (f) Apply silicone sealant along the length of the wall and at the bottom where the wall channel will be placed, including the top of the tray. (As shown step 1f).
- (g) Repeat the process for the other wall channel.



- (a) Reposition the channels back on the wall, aligned with fixing holes.
- (b) For the door frame wall channel, place a screw washer over the fixing screw. Insert screw with washer into fixing hole and tighten. Repeat for all 4 fixing screws.
- (c) Place the screw cover caps on.
- (d) For the side panel wall channel, place a screw washer ( x4 supplied) over the fixing screw. Insert screw with washer into fixing hole and tighten. Repeat for all 4 screws.
- (e) On the side panel gently tap the bottom extrusion into place with a rubber mallet. Ensure that the bottom extrusion is properly aligned and level with the vertical seal.



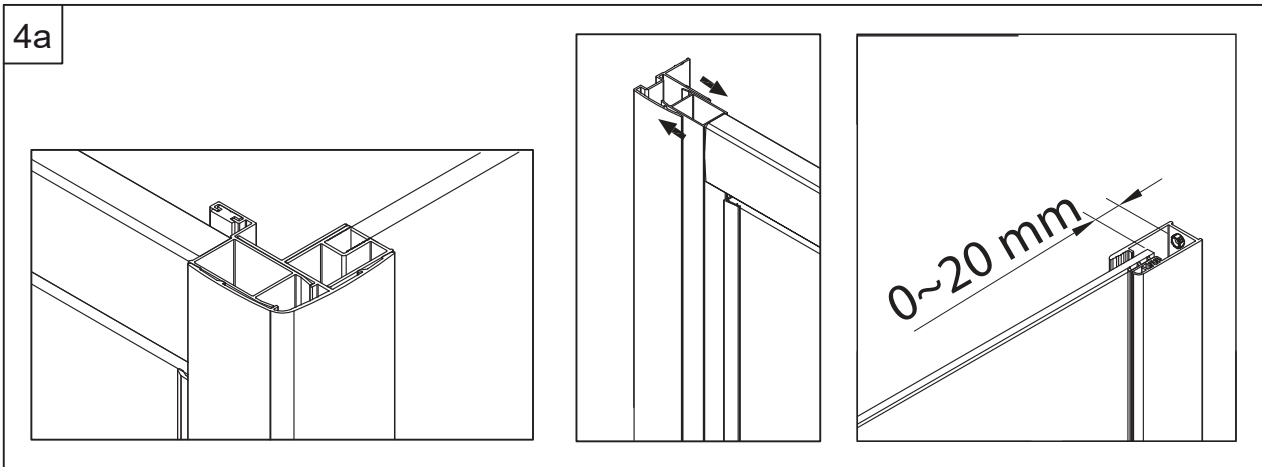
3



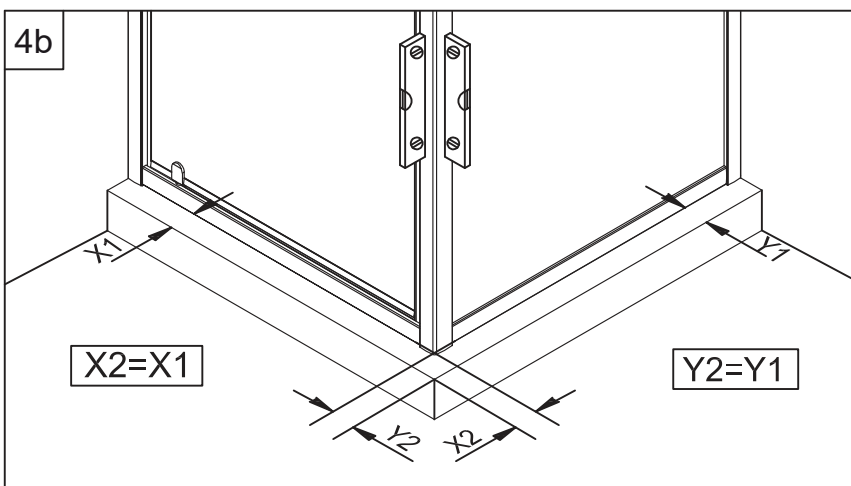
- (a) Carefully insert the door frame fully into the wall channel, sitting on the tray sill.
- (b) Carefully insert the glass side panel fully into the wall channel, sitting on the tray sill.
- (c) Swing the side panel inward so that the corner posts fully engage.
- (d) Place the assembled door and returns onto the tray in the correct position.

4

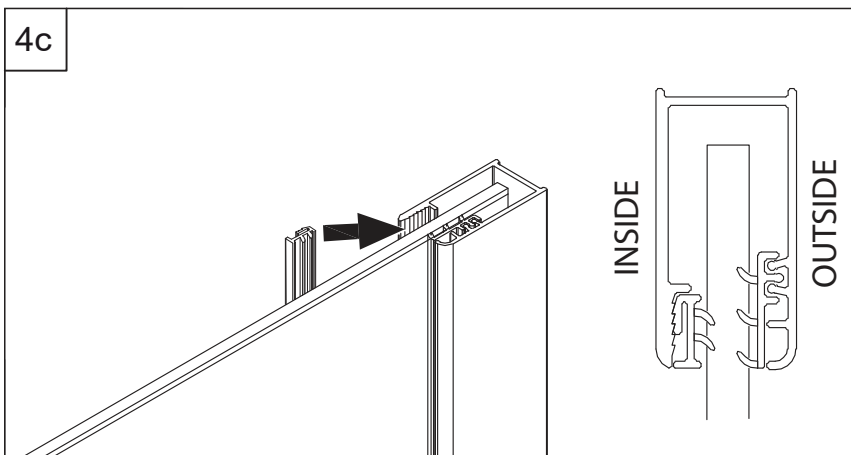
4a



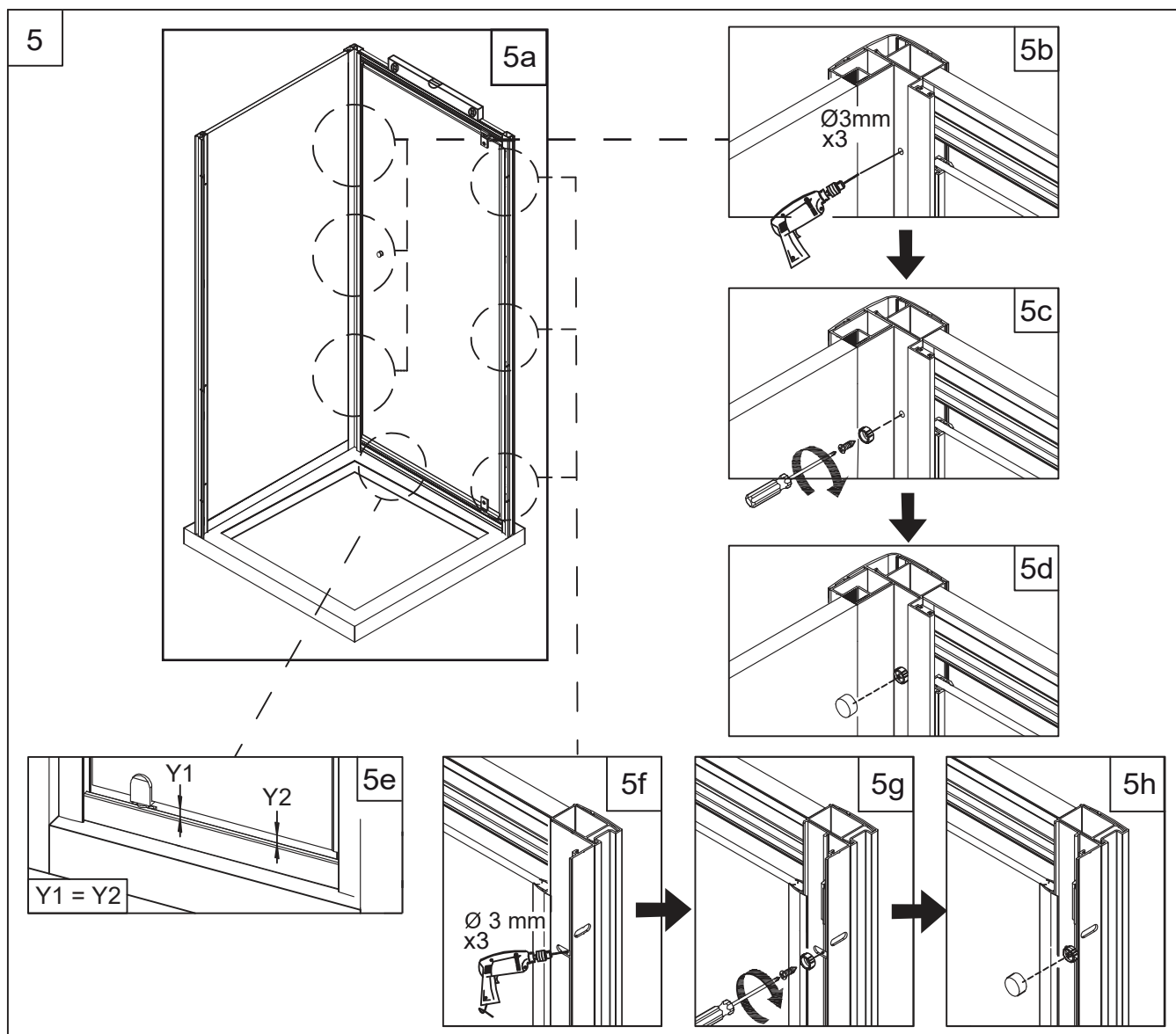
4b



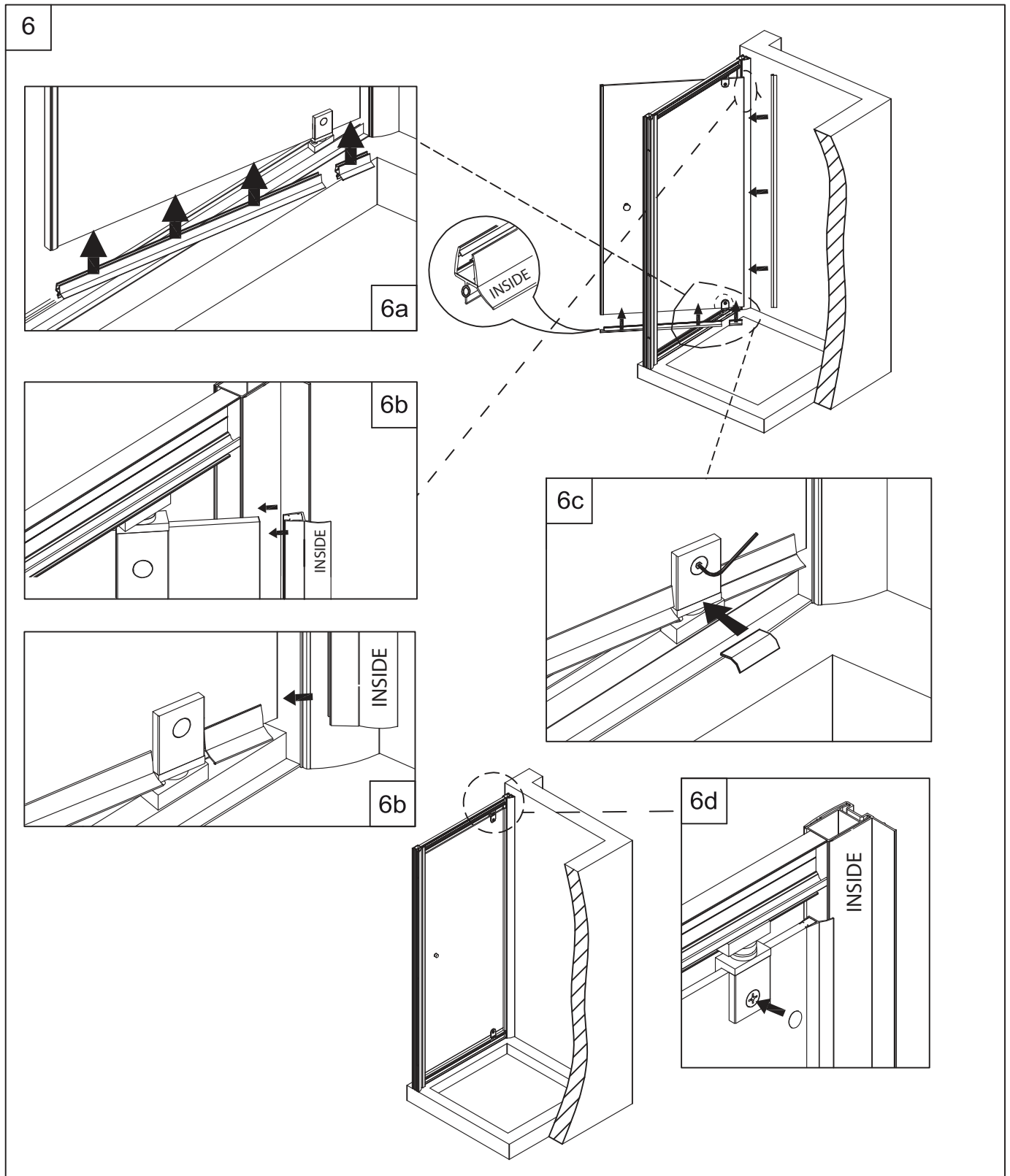
4c



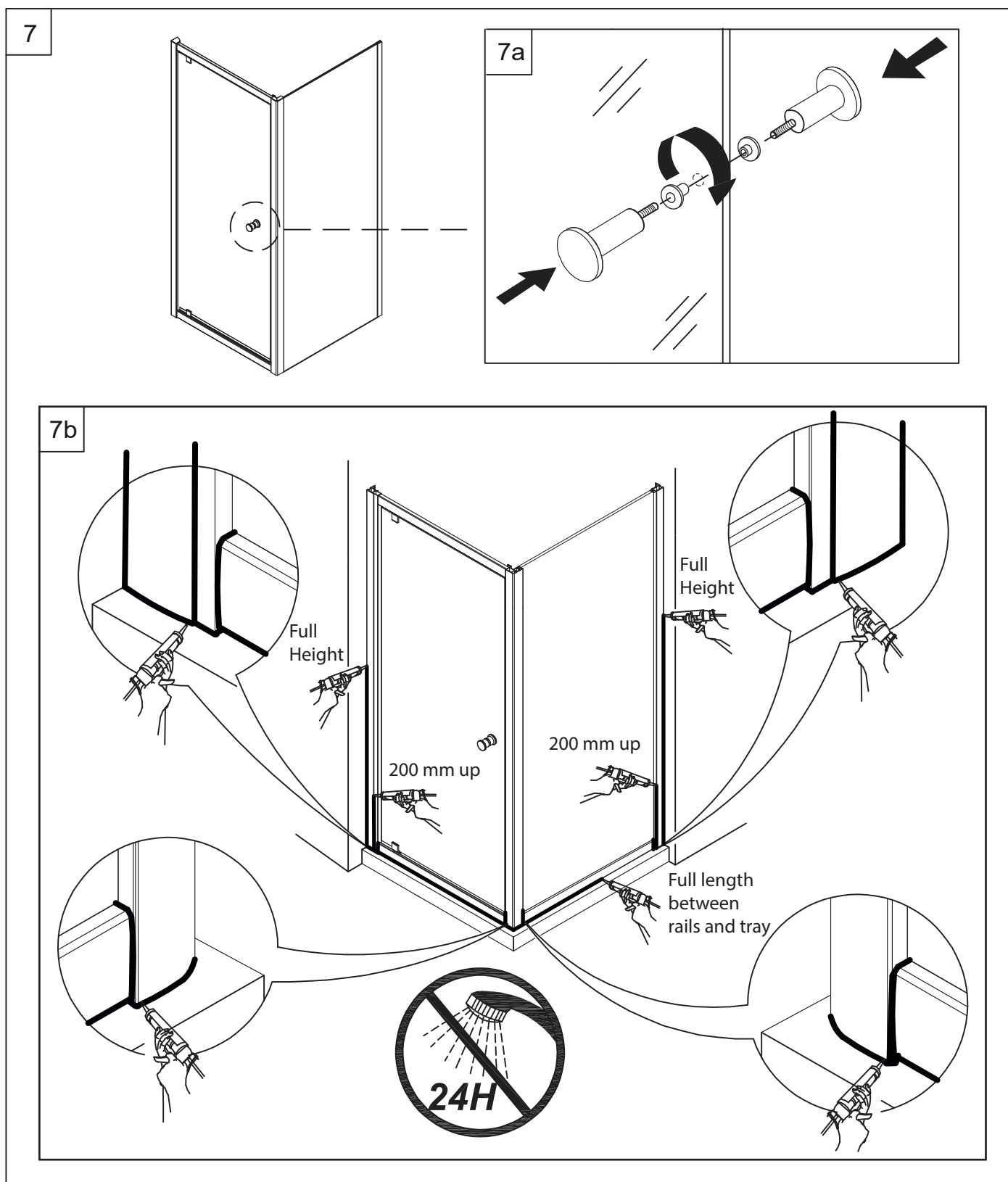
- (a) Keep the corner post assembly tightly fitted together and make frame adjustments by sliding the glass panels in or out inside the wall channels.
- (b) Adjust until there is an even distance between frame and tray edge all around. Ensure that posts are vertical by using a level.
- (c) Secure the side panel by inserting the glazing seal into the wall channel on the inside face of the side panel glass.



- (a) Use a level to ensure that the frame is square.
- (b) From the inside of the enclosure, drill through the corner post into the door frame. Be careful not to pierce all the way through or damage any other components.
- (c) Place a screw washer over the assembly screw. Insert screw with washer into hole and tighten.
- (d) Place the screw cover caps on & repeat steps for all 3 screws in corner post.
- (e) Ensure the door panel is sitting level.
- (f) From the inside of the enclosure, drill through the wall channel into the door frame. Be careful not to pierce all the way through or damage any other components.
- (g) Place a screw washer over the assembly screw. Insert screw with washer into hole and tighten.
- (h) Place the screw cover caps on & repeat steps for all 3 screws in wall channel.



- (a) Install the bottom seal on the door, angled fin facing inward.
- (b) Install the vertical door seal, long fin facing inward. The bottom of the seal should just miss the lower rail when opening and closing the door.
- (c) Carefully loosen the lower pivot plate, insert the pivot seal then re-tighten the plate.
- (d) Insert the pivot cover caps top and bottom.



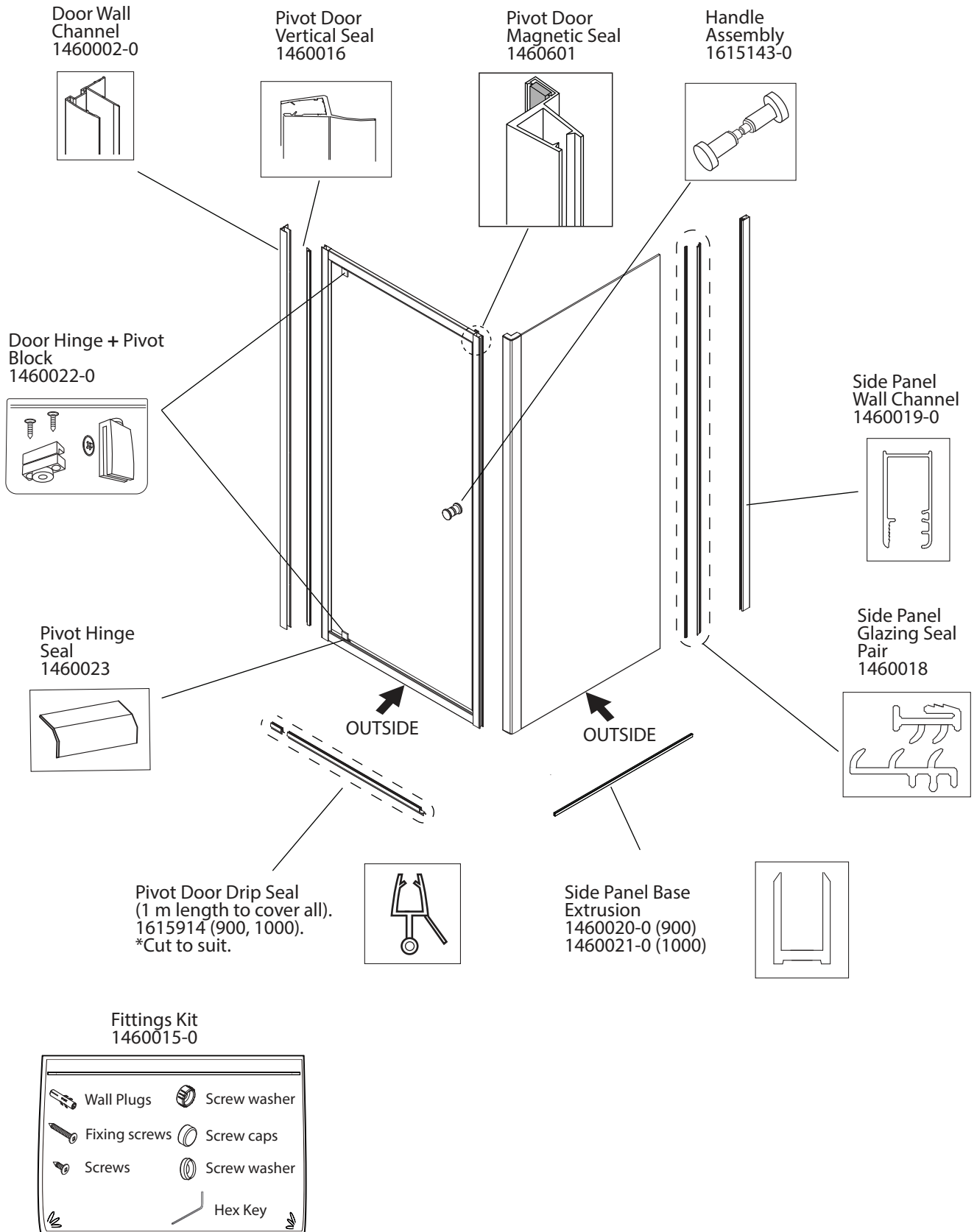
- (a) Install the door handle. twisting clockwise to tighten.
- (b) Apply sealant along the **outside surfaces** of the enclosure. Do not seal from inside. Allow the silicone sealant to cure for 24 hours before use.

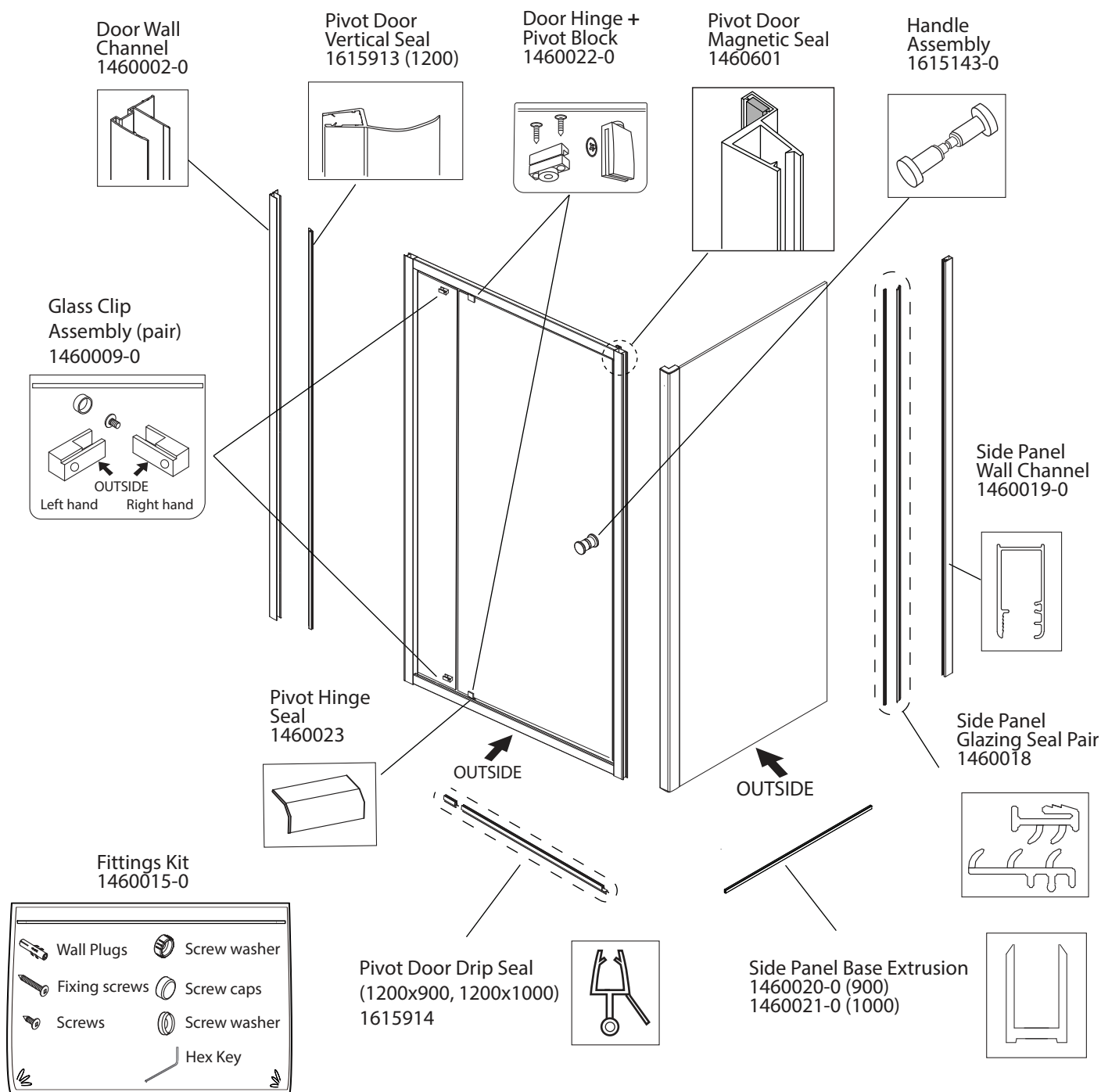
Installation Complete.

## CLEANING AND MAINTENANCE INSTRUCTIONS

Please refer to the homeowners guide and our website for cleaning instructions.

## SPARE PARTS - 1 (900 x 900 mm and 1000 x 1000 mm)



**SPARE PARTS -2 (1200 x 900 mm , 1200 x 1000 mm)**

**CONTACT AND WARRANTY INFORMATION**

**NEW ZEALAND**  
**Kohler New Zealand Limited**

**0800 100 382**  
**info@englefield.co.nz**  
**englefield.co.nz**

**AUSTRALIA**

**englefield.com**

