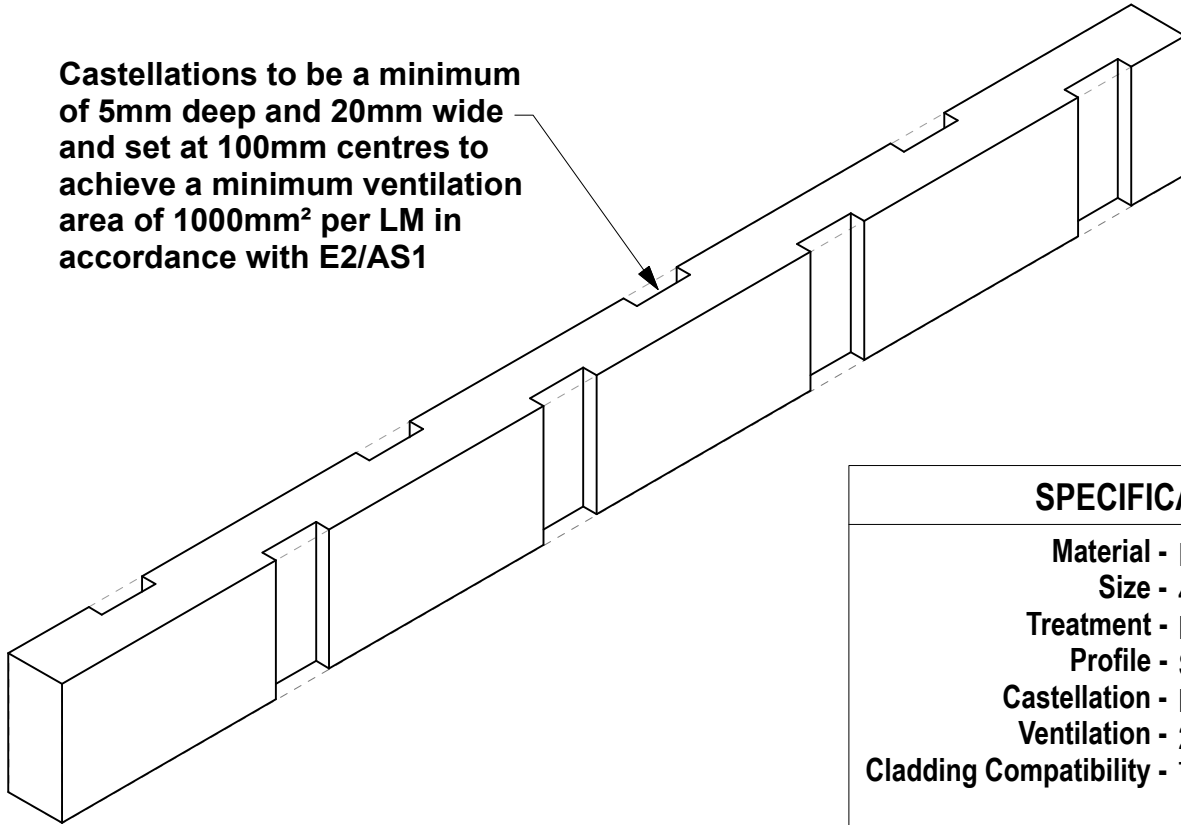
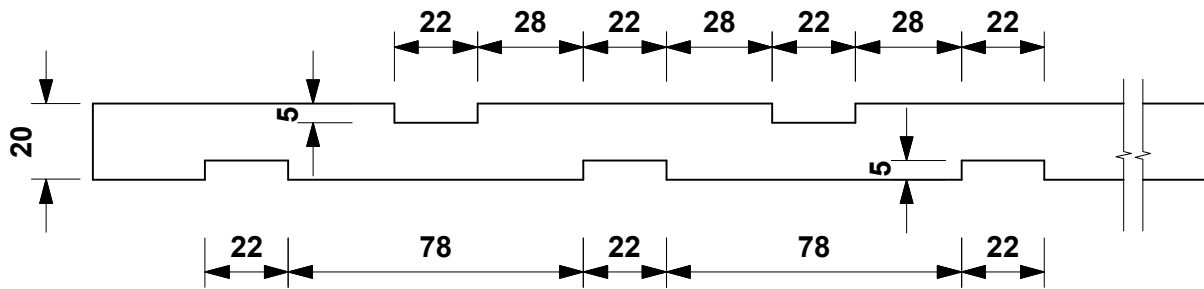


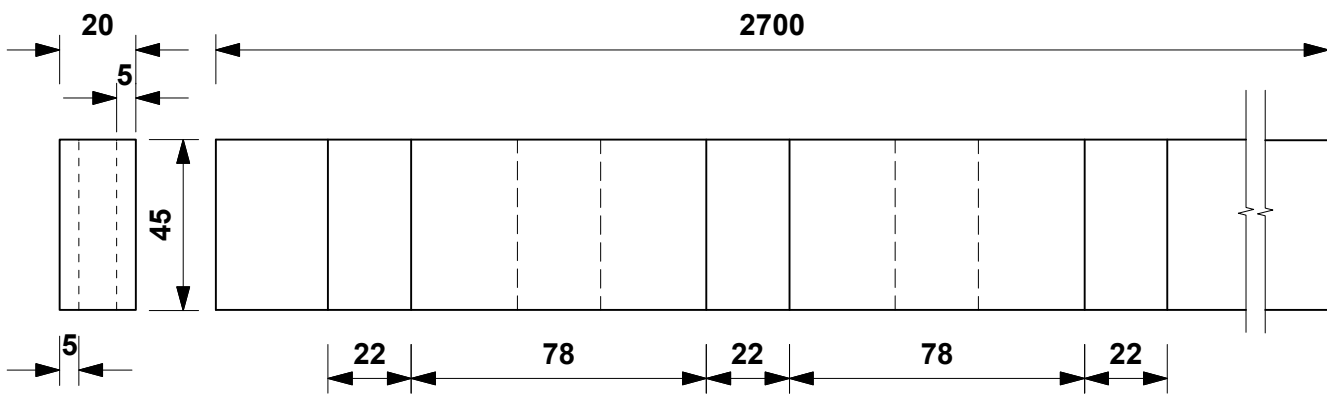
Castellations to be a minimum of 5mm deep and 20mm wide and set at 100mm centres to achieve a minimum ventilation area of 1000mm² per LM in accordance with E2/AS1



| SPECIFICATIONS | |
|------------------------|-----------------------------|
| Material | FJ Radiata Pine |
| Size | 45 x 20mm |
| Treatment | H3.2 CCA |
| Profile | Square |
| Castellation | Both Face |
| Ventilation | 2200mm ² per l/m |
| Cladding Compatibility | Timber |



TOP VIEW



END VIEW

SIDE VIEW

DO NOT SCALE OFF THIS DRAWING

EB1

CASTELLATED TIMBER CAVITY BATTEN

2.7m lengths



EZYScribe PRODUCTS
 38 ANVIL ROAD
 SILVERDALE
 AUCKLAND
 TEL 09 424-8109