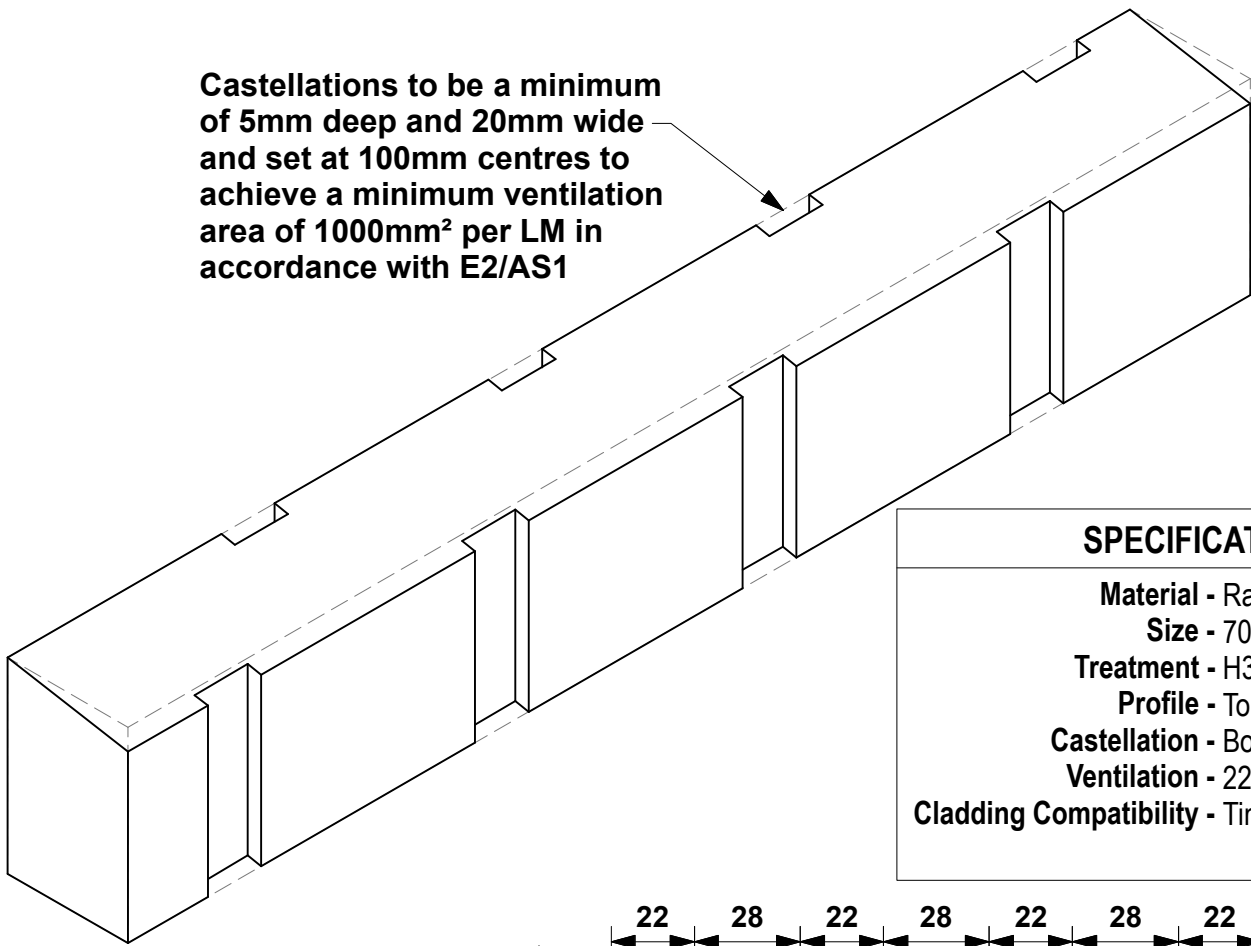
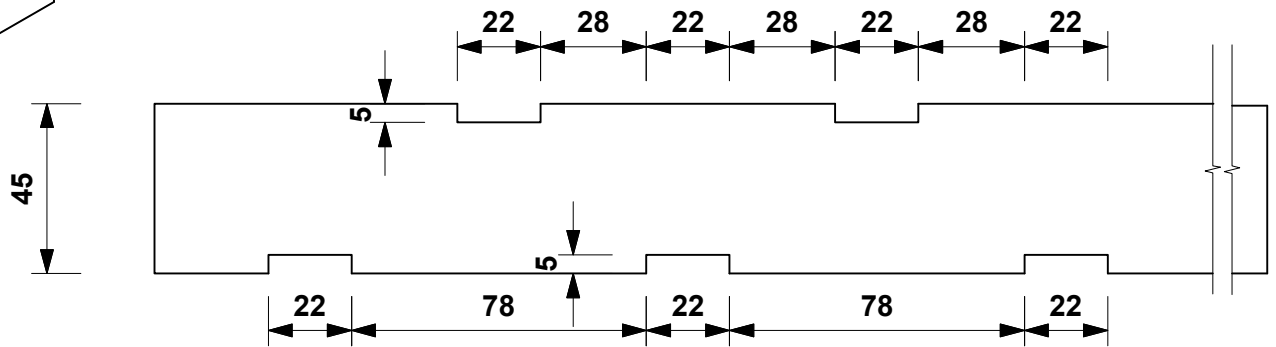


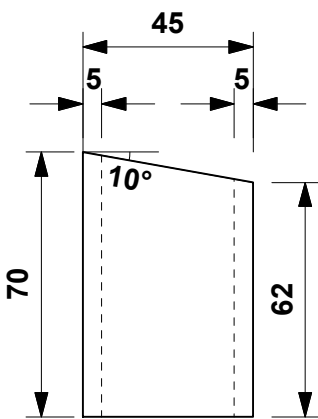
Castellations to be a minimum of 5mm deep and 20mm wide and set at 100mm centres to achieve a minimum ventilation area of 1000mm² per LM in accordance with E2/AS1



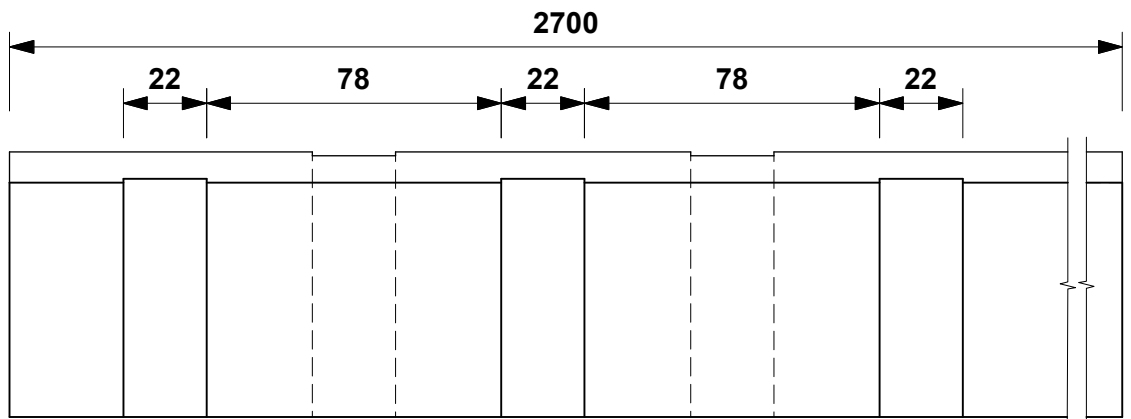
SPECIFICATIONS
Material - Radiata Pine
Size - 70 x 45mm
Treatment - H3.2 CCA
Profile - To Order
Castellation - Both Face
Ventilation - 2200mm ² per l/m
Cladding Compatibility - Timber



TOP VIEW



END VIEW



SIDE VIEW

DO NOT SCALE OFF THIS DRAWING

EB9

EZYScribe PRODUCTS
 38 ANVIL ROAD
 SILVERDALE
 AUCKLAND
 TEL 09 424-8109



CASTELLATED TIMBER CAVITY BATTEN

2.7m lengths

EZYScribe

PRE-CUT SCRIBER & CAVITY BATTEN