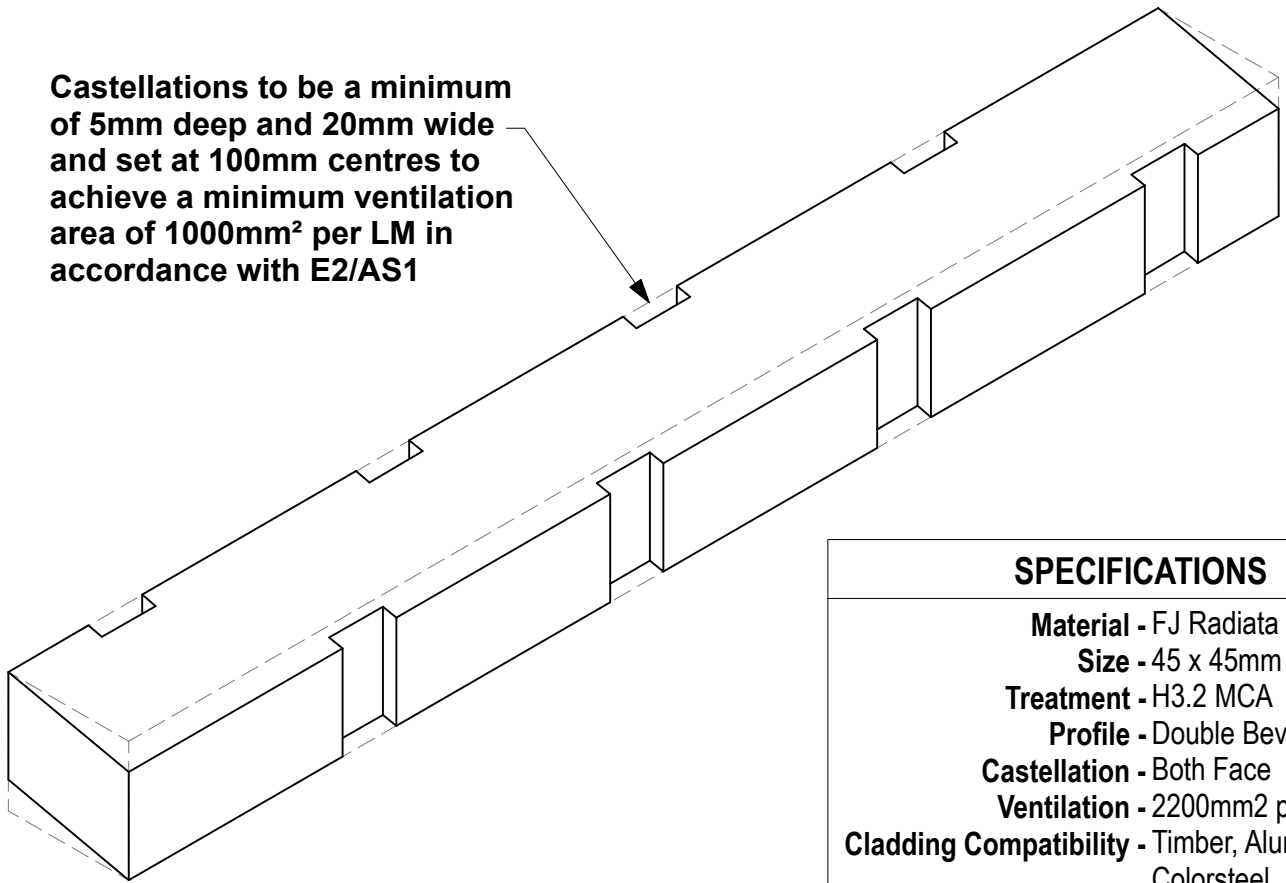
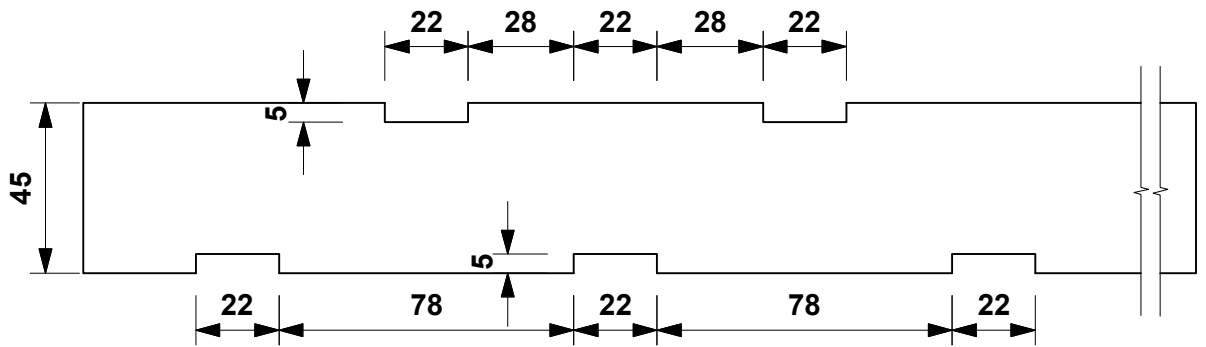


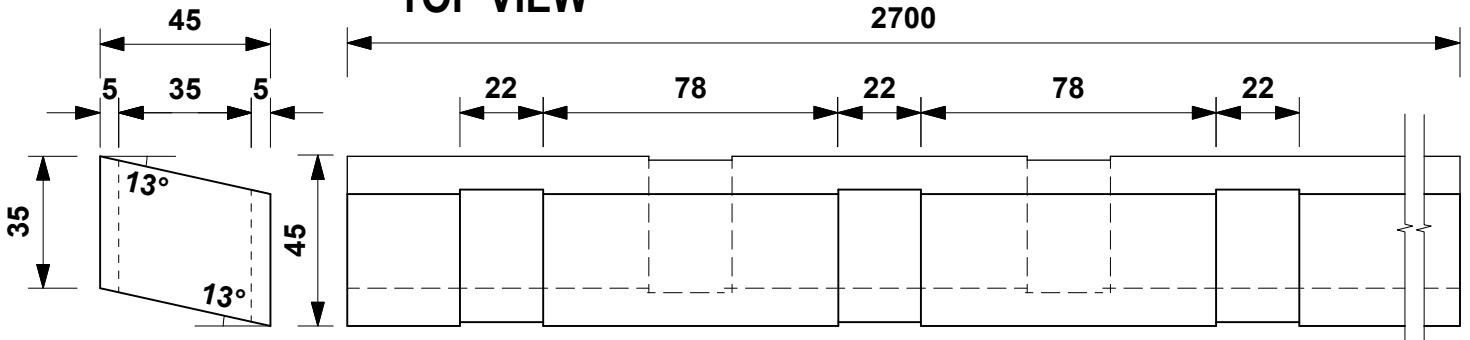
Castellations to be a minimum of 5mm deep and 20mm wide and set at 100mm centres to achieve a minimum ventilation area of 1000mm<sup>2</sup> per LM in accordance with E2/AS1



| SPECIFICATIONS         |                                  |
|------------------------|----------------------------------|
| Material               | - FJ Radiata Pine                |
| Size                   | - 45 x 45mm                      |
| Treatment              | - H3.2 MCA                       |
| Profile                | - Double Bevel                   |
| Castellation           | - Both Face                      |
| Ventilation            | - 2200mm <sup>2</sup> per l/m    |
| Cladding Compatibility | - Timber, Aluminium, Colorsteel. |



TOP VIEW



END VIEW

SIDE VIEW

DO NOT SCALE OFF THIS DRAWING

**EB7**

**CASTELLATED TIMBER CAVITY BATTEN**

*2.7m lengths*



**EZYScribe PRODUCTS**  
 38 ANVIL ROAD  
 SILVERDALE  
 AUCKLAND  
 TEL 09 424-8109