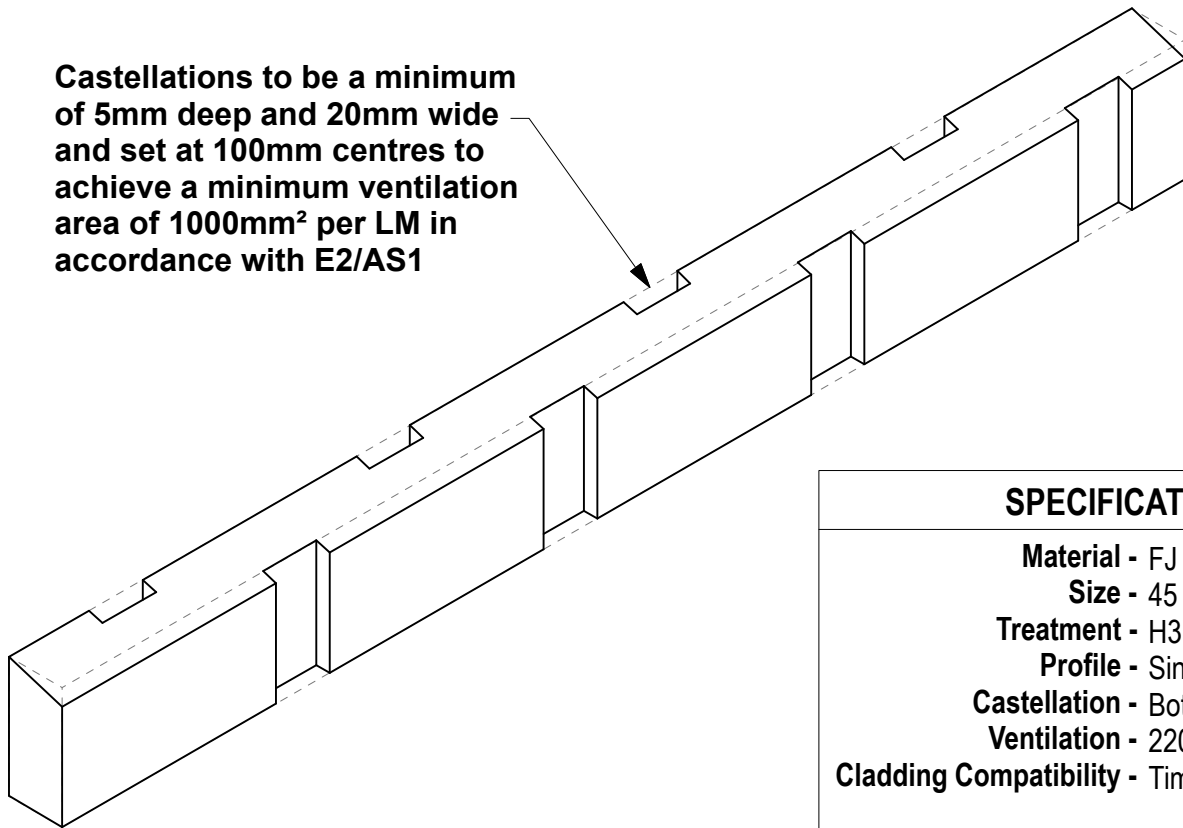
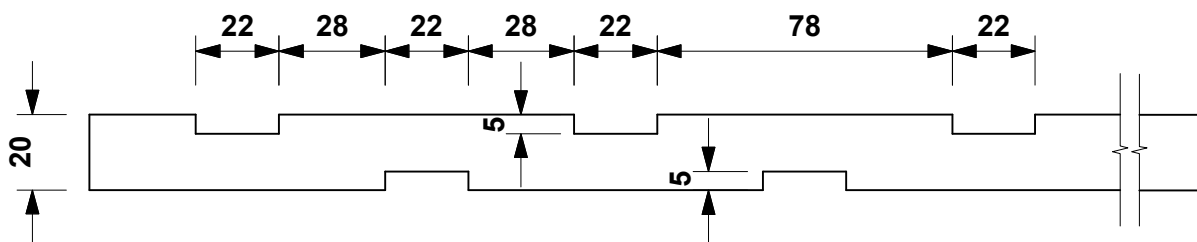


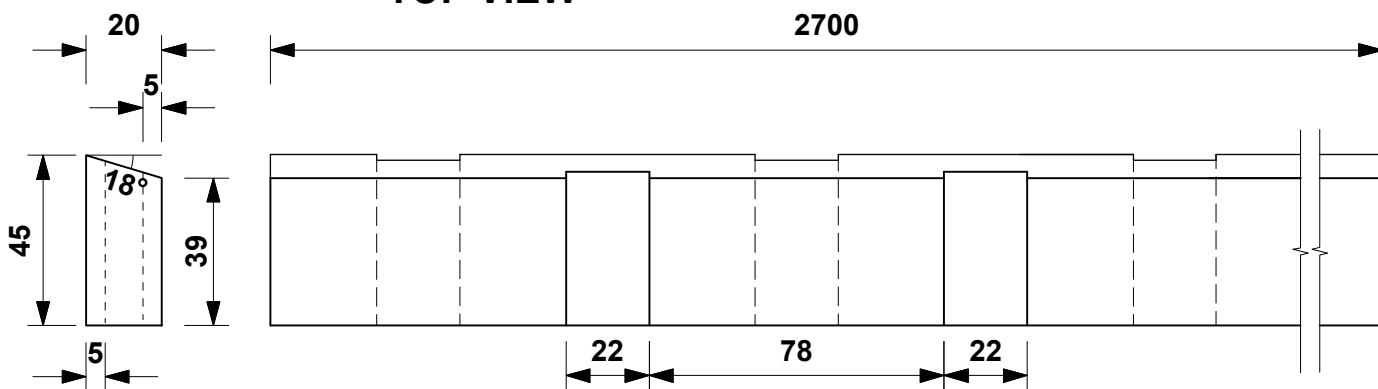
Castellations to be a minimum of 5mm deep and 20mm wide and set at 100mm centres to achieve a minimum ventilation area of 1000mm² per LM in accordance with E2/AS1



| SPECIFICATIONS | |
|------------------------|-------------------------------|
| Material | - FJ Radiata Pine |
| Size | - 45 x 20mm |
| Treatment | - H3.2 CCA |
| Profile | - Single Bevel |
| Castellation | - Both Face |
| Ventilation | - 2200mm ² per 1/m |
| Cladding Compatibility | - Timber |



TOP VIEW



END VIEW

SIDE VIEW

DO NOT SCALE OFF THIS DRAWING

EB3

EZYScribe PRODUCTS
38 ANVIL ROAD
SILVERDALE
AUCKLAND
TEL 09 424-8109



CASTELLATED TIMBER CAVITY BATTEN

2.7m lengths

EZYScribe
PRE-CUT SCRIBER & CAVITY BATTEN