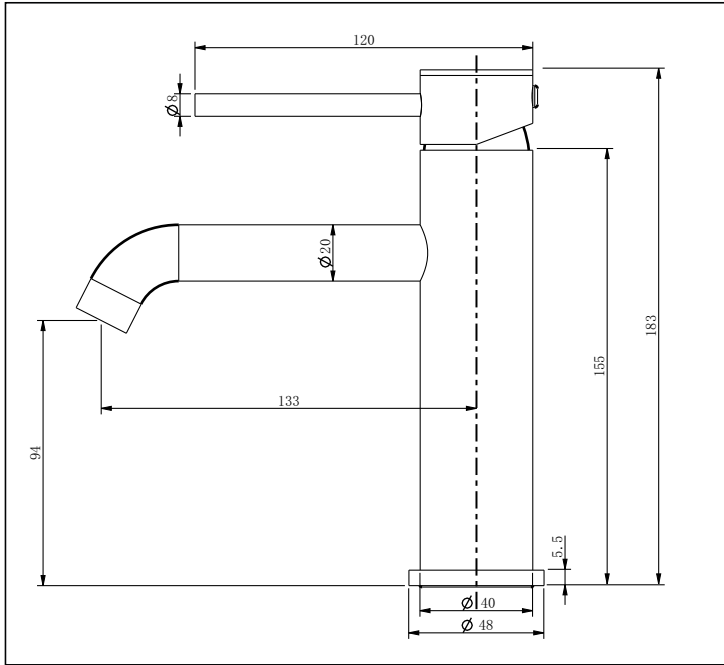


Circo

Basin Mixer All Pressure



Code: CC BASMAP BS | CC BASMAP GM | CC BASMAP BLK | CC BASMAP BG | CC BASMAP M
Finish: Brushed Stainless | Gun Metal | Black | Brushed Gold | Mirror Finish

Spout: Fixed

Water Outlet: M20 ring with TT aerator PCA supplied

Body: 40mm diameter

Stainless Steel Inlet Hoses:

Hot: Size: M10 x1/2"BSP
 Length: 400mm

Cold: Size: M10 x1/2"BSP
 Length: 400mm

Base plate supplied with custom flat seal

Mounting Hardware: 32mm Stainless steel threaded tube

Nut: 36mmAF

Rubber washer

Max Bench Thickness: 42mm

Installation Hole Diameter: Minimum: 32mm
 Maximum: 36mm

Cartridge: Kerox 35mm Flat base

Flow Control: 7ℓ/min PCA supplied for regulated flow with mains pressure system

Max hot @ 35kPa = 4.5 ℓ/min

Continued on second page

Note: 2 year warranty on coloured finish

Suitable for low/unequal & mains pressure systems

Recommended Operational Pressure Range: 35 - 600 kPa
 Maximum Operating Temp: 80°C Never to Exceed: 1000 kPa



aquatica



KIWI OWNED COMPANY

NZ • DESIGNED
 • ASSEMBLED
 • TESTED

Aquatica NZ Limited

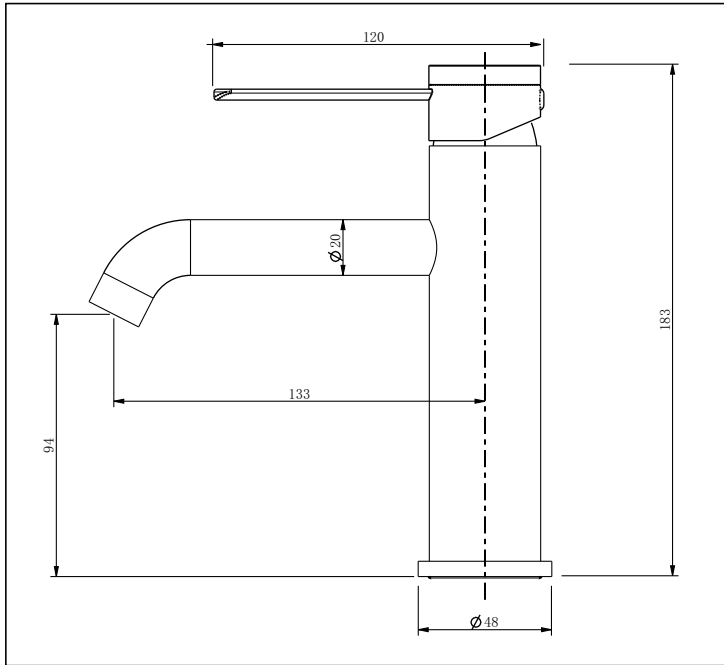
9 Saunders Place,
 Avondale, Auckland.
 Tel: 09-828 2068,
 Fax: 09-828 2069
 Email: info@aquatica.co.nz
 or visit our website:
www.aquatica.co.nz

© copyright Aquatica 2019

Please note: Specifications are subject to change without notice. It is the responsibility of the installer to check the measurements of the physical product before installation

Circo

Basin Mixer All Pressure



Finish/Material Specifications:

- Body and Handle are Made from 100% solid stainless steel (Lead free)
- (M) Mirror finish is achieved through polishing the stainless to a mirror-like shine.
- Black finish is electroplated
- The Gun Metal and Brushed Gold finish are PVD (Physical Vapour Desposition)

aquatica



KIWI OWNED COMPANY

NZ • DESIGNED
• ASSEMBLED
• TESTED

Aquatica NZ Limited

9 Saunders Place,
Avondale, Auckland.
Tel: 09-828 2068,
Fax: 09-828 2069
Email: info@aquatica.co.nz
or visit our website:
www.aquatica.co.nz

© copyright Aquatica 2019

Note: 2 year warranty on coloured finish

Suitable for low/unequal & mains pressure systems

Recommended Operational Pressure Range: 35 - 600 kPa
Maximum Operating Temp: 80°C Never to Exceed: 1000 kPa

