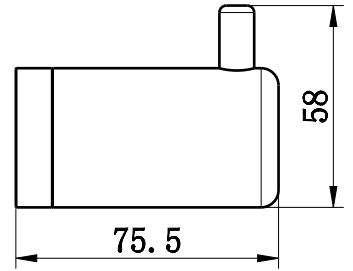
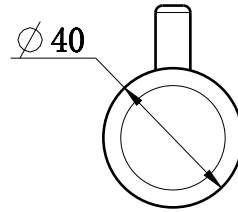
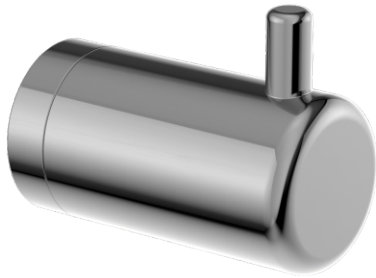


Mecca Care 25MM Wall Hook



SKU



CHROME
NR CR2582CH



MATTE BLACK
NR CR2582MB



BRUSHED NICKEL
NR CR2582BN



GUN METAL
NR CR2582GM



BRUSHED GOLD
NR CR2582BG



BRUSHED BRONZE
NR CR2582BZ

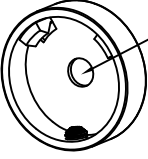
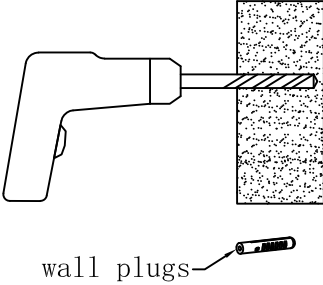
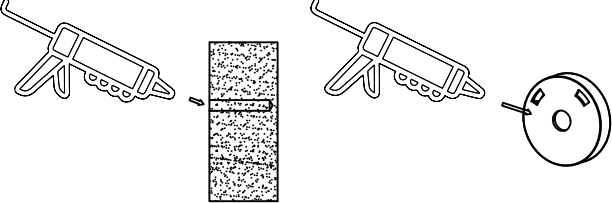

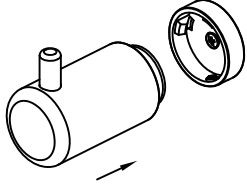
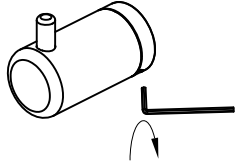
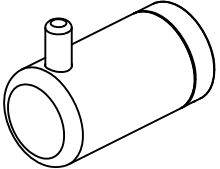
Features

1. Australian owned and designed.
2. Gun metal, brushed gold and brushed bronze colours are PVD coated for long term durability.



MECCA CARE
ASSISTED LIVING 25MM

Installation Instruction

 <p>make hole positions</p>	<p>1. Locate wall studs, install into stud. Place wall seal/mounting bracket on wall at correct height over centre of stud and mark hole positions on wall.</p>
 <p>wall plugs</p>	<p>2. Drill pilot holes into wall stud approximately 60mm deep to suit mounting screws (and wall plugs if required). Tip: 4mm hole for screws into timber or 10mm hole for wall plugs.</p>
	<p>3. Apply small amount of silicon to mounting bracket and wall in and around the screw hole.</p>
	<p>4. Install mounting bracket by screwing onto wall. Tip: Use appropriate mounting screws for the wall stud material, supplied screws are for timber wall stud.</p>
	<p>5. Push wall hook onto wall bracket.</p>
	<p>6. Tighten grub screws with allen key.</p>
	<p>7. Finished.</p>