

## *Opal* Bathroom Accessories

Versions:202311

### Finish

---

 Brushed Bronze

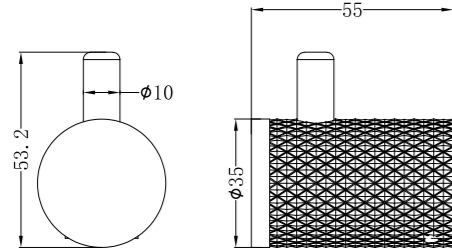
 Graphite

 Brushed Gold

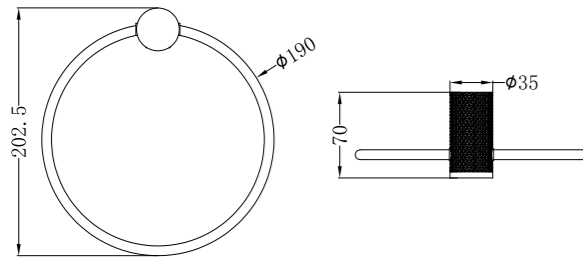
 Brushed Nickel

# Opal Bathroom Accessories

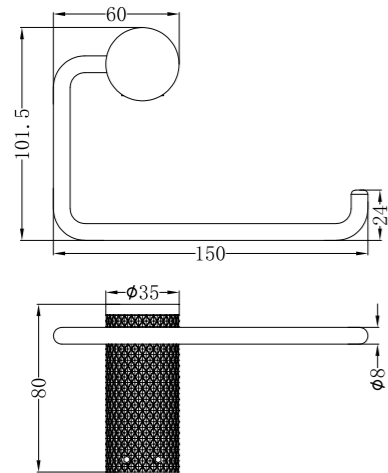
**OPAL ROBE HOOK**  
NR2582BN / NR2582GR / NR2582BG  
NR2582BZ



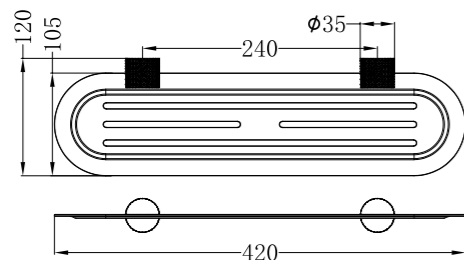
**OPAL TOWEL RING**  
NR2580aBN / NR2580aGR / NR2580aBG  
NR2580aBZ



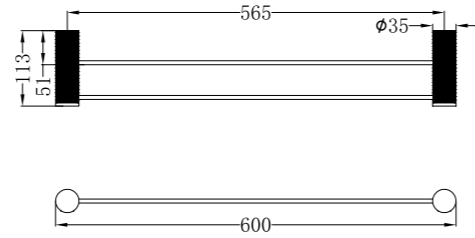
**OPAL TOILET ROLL HOLDER**  
NR2586BN / NR2586GR / NR2586BG  
NR2586BZ



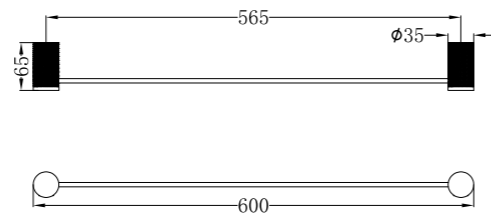
**OPAL METAL SHOWER SHELF**  
NR2587aBN / NR2587aGR / NR2587aBG  
NR2587aBZ



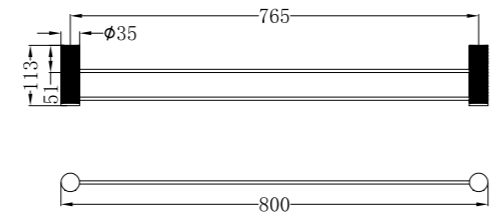
**OPAL DOUBLE TOWEL RAIL 600MM**  
NR2524dBN / NR2524dGR / NR2524dBG  
NR2524dBZ



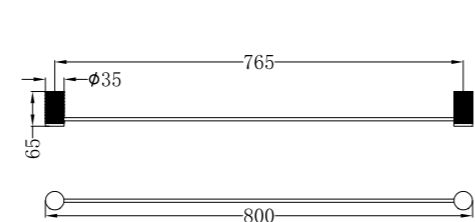
**OPAL SINGLE TOWEL RAIL 600MM**  
NR2524BN / NR2524GR / NR2524BG  
NR2524BZ



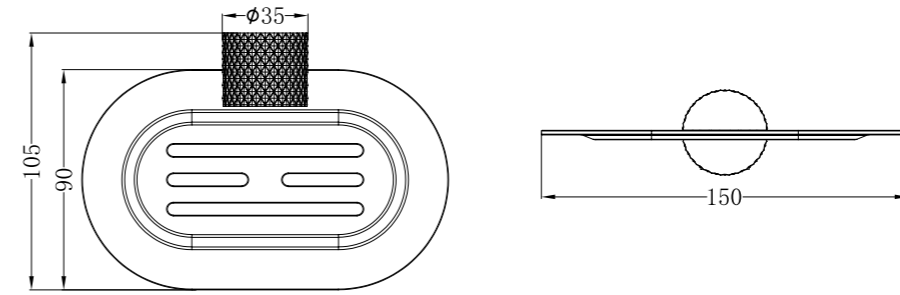
**OPAL DOUBLE TOWEL RAIL 800MM**  
NR2530dBN / NR2530dGR / NR2530dBG  
NR2530dBZ



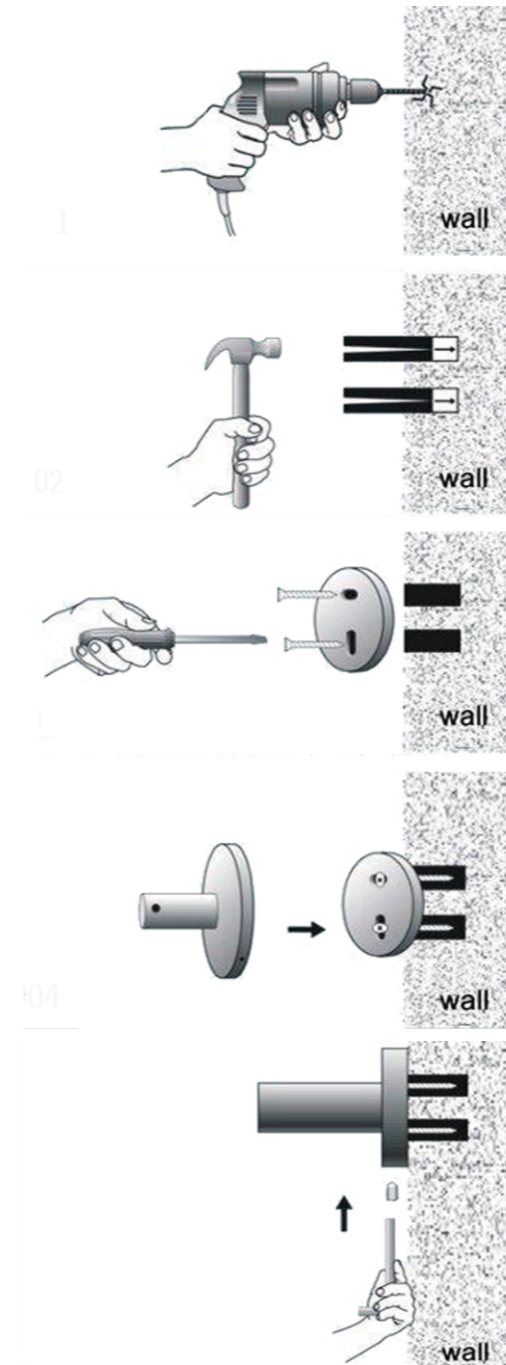
**OPAL SINGLE TOWEL RAIL 800MM**  
NR2530BN / NR2530GR / NR2530BG  
NR2530BZ



**OPAL SOAP DISH HOLDER**  
NR2581BN / NR2581GR / NR2581BG  
NR2581BZ



## Installation Instruction



1. Put the fixing blocks (piece) over on the right place on the wall, and stay level, use marking pen through the holes of fixing block to mark out fixing spots on the wall. Then drill holes by electric hand drill with 6mm drilling bit on the spots.

2. Put the expansion plugs into the wall by hammer.

3. Put fixing block cover on the holes and fix firmly by expansion screws.

4. Put the base of bathroom accessory cover on the fixing blocks.

5. Screw grub screws into the base, make it against to the fixing block tight and firm.

# Nero

[info@nerotapware.com.au](mailto:info@nerotapware.com.au)  
[nerotapware.com.au](http://nerotapware.com.au)

11-13 Buontempo Road  
Carrum Downs Vic 3201

