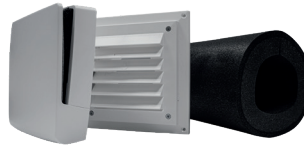


Thank you for choosing the Manrose CALMA 80mm acoustic damping passive ventilation kit. The supply air ventilator is designed for installation in the bedroom and living room etc. The recommended placement is high on the wall and preferably diagonally opposite the door opening that the air will be drawn through.

The ventilator consists of an internal inlet fitting with internal control valve and insect filter, the layered noise damping duct tube and an outer fixed louvre grille.

A basic flow of approximately 3 l/s at 10 Pa is standard in the central default flow position. The ventilator opening valve, shown in Fig.6 below, can also be fixed with a screw in any position between fully open and fully closed.

Description	Product Code
Calma Acoustic Passive Ventilation	<b>DCT0101</b>
Alternative External Typhoon Dome Cowl	<b>DCT4572</b>



## INSTALLATION

### 1. Penetration

Mark holes to suit the spigots on the outer grille and internal ventilator through the wall at a slight outward angle of approx. 1mm/80mm - see dimensions below.

Use a holesaw or drill a ring of small holes then knock-out the core.

### 2. Installation of the outer section

Measure the thickness of the wall cladding and cut the spigot to the same measurement.

Insert the spigot in the hole.

Press sleeve on the outer grille.

Fit the outer grille with sleeve and screw to the façade.

Seal against the facade using silicone sealing compound and ensure the four screw heads are also covered with sealant.

In areas exposed to the weather, the fixed louvre grille may be replaced with the alternative external typhoon dome cowl - DCT4572.

### 3. Installation of the internal section.

Remove the cover and insect filter from the chassis.

Press sleeve on the rear of the chassis.

Screw on the internal section.

Now set the required opening with the control lever (circled in Fig.6). The lever can be screw-fixed if a permanent opening position is required.

Refit the insect filter and cover.

## MAINTENANCE

The ventilator is easy to clean. The cover is pulled straight off; the insect filter is then visible. This is then easy to remove and wash. It is important to keep the filter clean.

## DIMENSIONS (mm)

