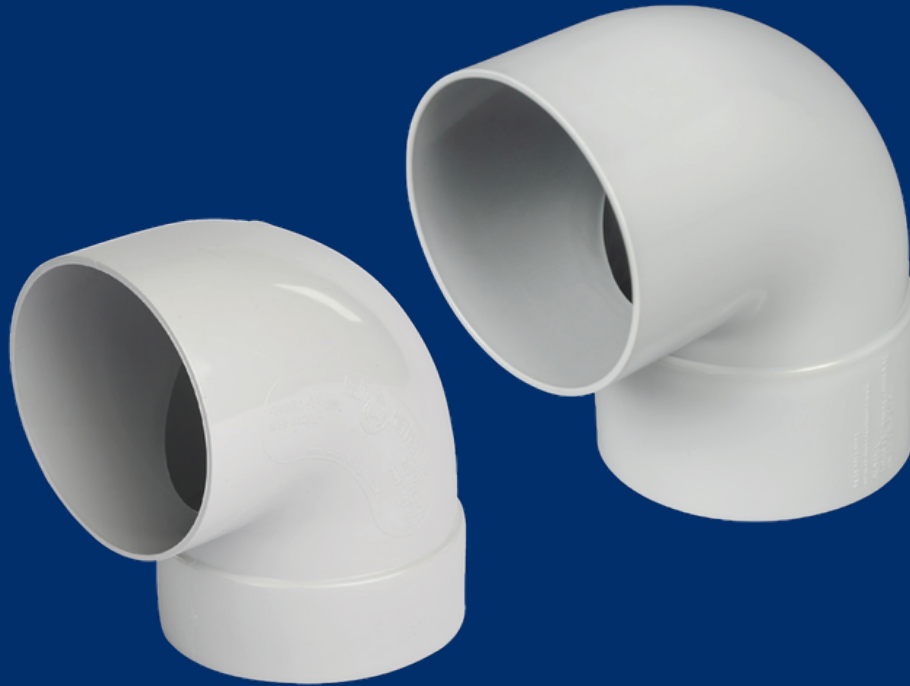


RAIN HARVESTING

by Blue Mountain Co

True 90° Tank Overflow Bends



Installation and Specification Guide

PRODUCT DETAILS

Purpose built, true 90° bends designed originally for rainwater tanks.

Fit the bend directly into pipework around your inlet or overflow to allow your pipes to be installed perfectly perpendicular or parallel to each other or the tank wall.

Code	Size	Country
TATO10	90mm	Australia
TATO19	100mm	
TATO10	90mm	New Zealand
TATO19	100mm	

Installation

WHAT'S IN THE BOX?

- 90° Tank Overflow Bend

TOOLS/MATERIALS YOU MAY REQUIRE

- Holesaw
- Marker pen
- Silicon
- PVC Solvent Glue and primer

90° TANK OVERFLOW BENDS

Using the bend to direct water away from your overflow

Simply use PVC solvent glue to glue the bend directly to your overflow in the direction required. Depending on whether your overflow has a male (spigot) or female (socket) fitting, you may require an adaptor. Then glue in pipework onto the fitting as required.

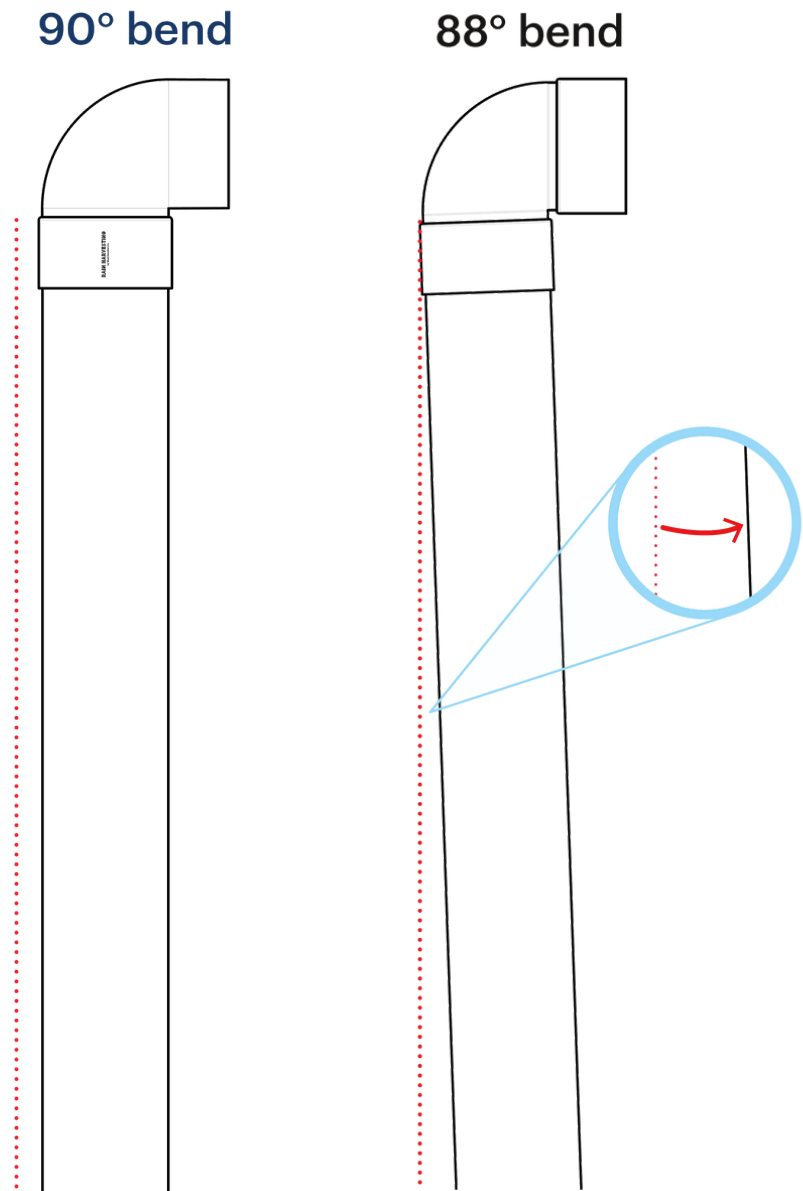
Using the bend as a high level overflow

Note that we also have a range of overflows with flanges which are better suited to be used as an overflow if you prefer to use this style.

- 1 - Mark the centerpoint of where the overflow will sit.
- 2 - Use a holesaw with the same diameter as the bend to drill a hole in the tank. Remove any swarf or flashing from the hole.
- 3 - Insert the bend through the hole, facing the bend upwards.
- 4 - Silicon around the bend as required to secure it in place. Then glue in pipework onto the fitting as required.

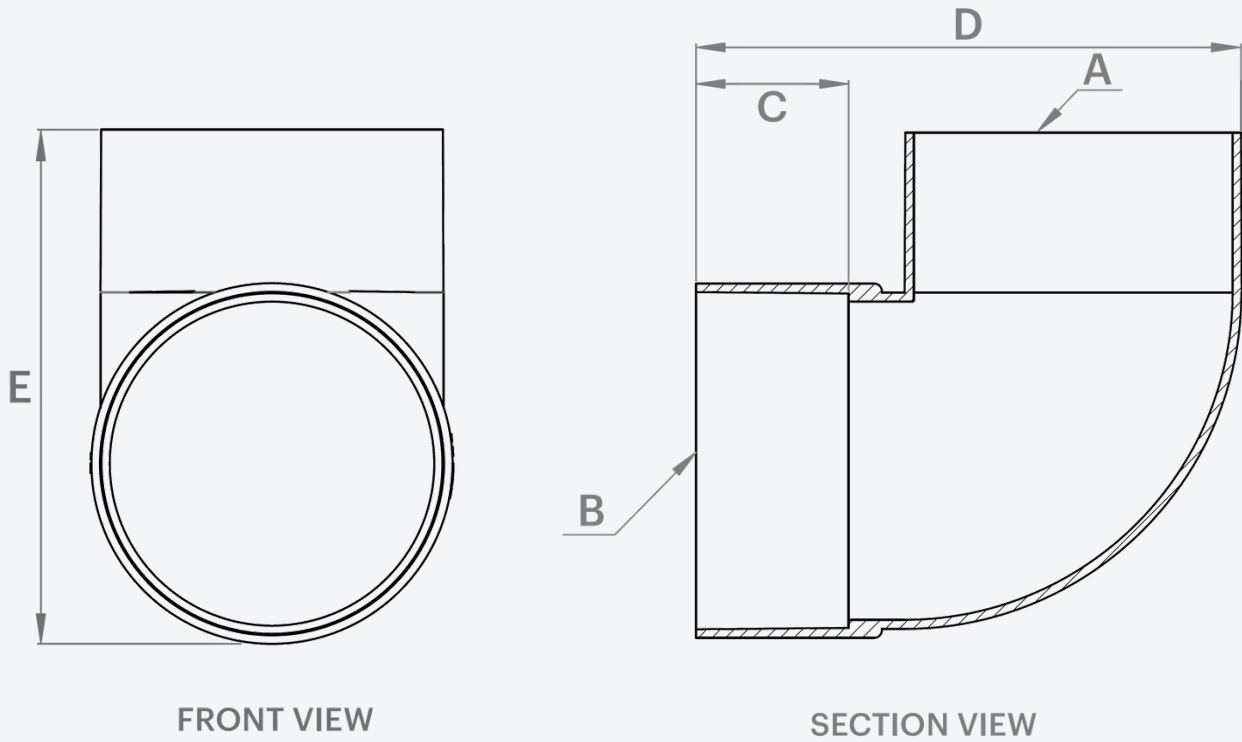
TRUE 90° BEND

For 100mm overflows, no “kick” with the standard 88° bend (standard 100mm bends are not available in 90°). Overflow pipework will look aesthetically pleasing.



Product Specifications

True 90° Tank Overflow Bends



FRONT VIEW

SECTION VIEW

Country	Code	A	B	C	D	E
Australia & New Zealand	TATO10	90 M	90 F	31	134	121
	TATO19	100 M	100 F	50	178	166

All dimensions are in mm unless otherwise stated.

Fitting guide:

F = Female / Socket Fitting

M = Male / Spigot Fitting (Pipe size)

IP = In-Pipe Fitting

Maintenance

When properly installed, your tank overflow should be maintenance-free.



A common misconception about collecting rainwater is that all you need is a roof, a tank and some rain. This ‘tanking’ approach cannot always be relied on to deliver the volume – or quality – of water that you require. That is where we can help.

With some thought, your rain harvesting system can provide you with cleaner water and lots of it. Whether you’re completely reliant on tank water or wanting to keep the garden green, our simple steps will help you achieve your goal.

The Rain Harvesting approach to rainwater collection involves using tested and proven products to make quality rainwater available for use in and around your property. You don’t need much to get started and you will be surprised how easy it is to get the most out of your rainwater system.

[How can we help you?](#)

COMPLIANCE

- AS/NZS 4020:2005 – Testing of products for use in contact with drinking water

DISCLAIMER This product specification is not a complete guide to product usage. Further information is available from Rain Harvesting Pty Ltd and from the installation and Operating instructions. This specification sheet must be read in conjunction with the installation and Operating Instructions and all applicable statutory requirement. Product specifications may change without notice. © Rain Harvesting Pty Ltd

RAIN HARVESTING

by Blue Mountain Co

For more information or to find out
how we can help, just give us a call on

+61 7 3248 9600

Or visit our website at

rainharvesting.com