

# IBS Showerline

## TECHNICAL DOCUMENTATION

NOVEMBER 2019 – Version 1





# CONTENTS

3  
3  
3  
3  
3

3  
3

4



4



4



4



4

5



5



5



5



6



6



6



7



7



8



8

# GENERAL

## > Purpose

This guide provides advice on handling, installing and maintaining IBS Showerline Wetwall Lining (IBS Showerline).

## > Important documents

This guide must be read in conjunction with the:

- Showerline Wetwall Lining pass™
- Showerline Wetwall Lining Warranty.

## > Skills required

To install IBS Showerline, the installer must at a minimum, be a competent DIYer.

## > For more help

Technical assistance is available at [info@ibs.co.nz](mailto:info@ibs.co.nz). While all reasonable efforts have been made to ensure the accuracy of information provided, this document is a guide only. It may be subject to change.

## > For our warranty

Refer to [www.ibs.co.nz](http://www.ibs.co.nz).

## IBS SHOWERLINE WETWALL LINING

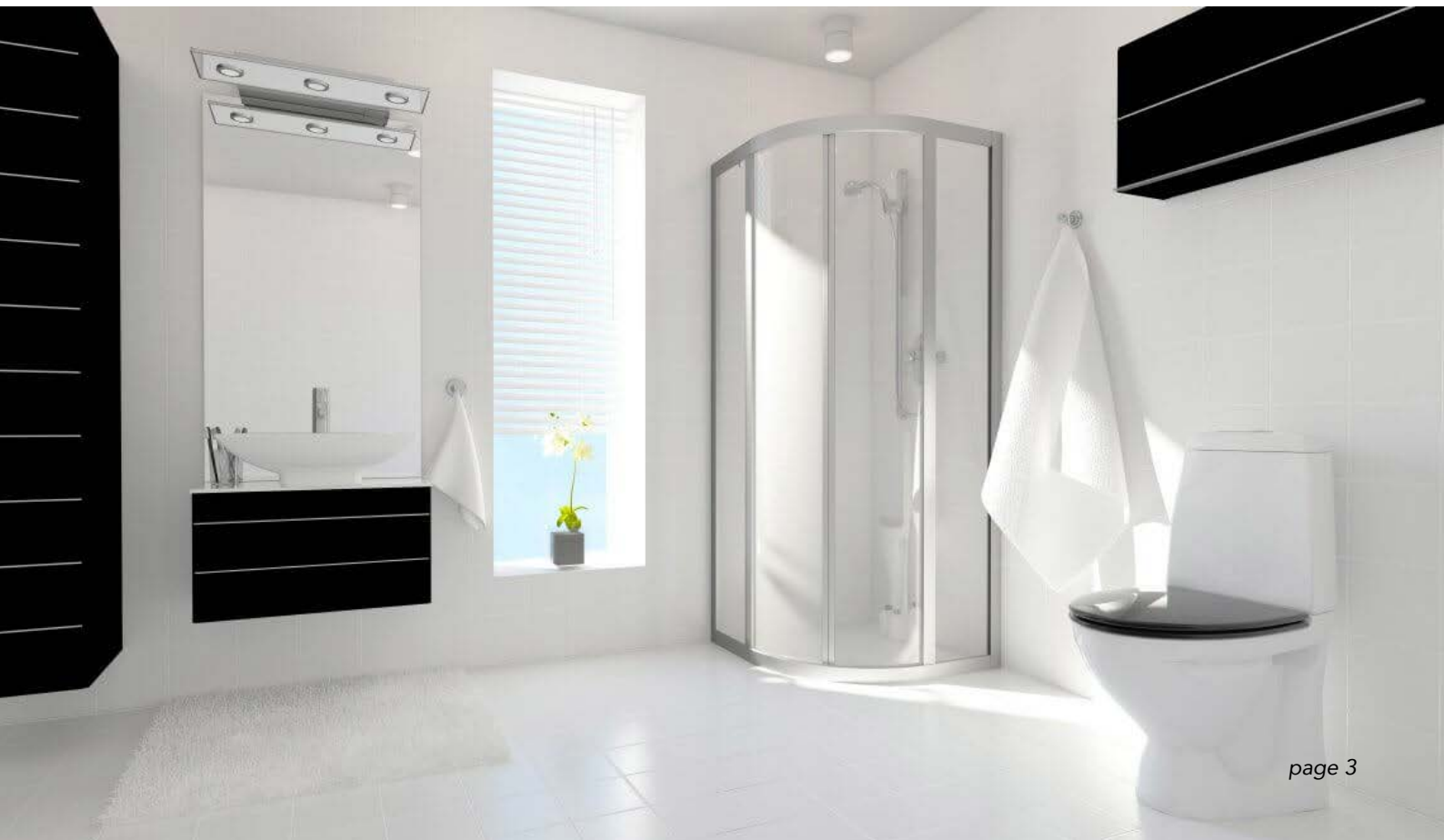
## > Description

IBS Showerline is an aluminium composite sheet, comprising a polyethylene (PE) core, sandwiched between layers of 0.4mm aluminium and finished with polyvinylidene fluoride (PVDF) coating. Sheets are available in the following sizes:

- 2400 x 900 x 4.75 mm
- 2400 x 1200 x 4.75 mm
- 2700 x 1200 x 4.75 mm

## > Scope & limitations

For scope and limitations refer to IBS Showerline Wetwall Lining pass™.





# INSTALLATION

## PRE-INSTALLATION

### > Health & safety

Take all necessary steps to ensure your safety and the safety of others:

- ensure adequate ventilation or mechanical dust extraction when cutting or drilling
- ensure the IBS Showerline sheets are well supported when cutting
- wear appropriate safety equipment, clothing and footwear
- use all tools in accordance with relevant instruction manuals
- clear the work area of any obstructions before work starts.

For further information refer to:

- WorkSafe Small Construction Sites, The Absolutely Essential Health and Safety Toolkit, 07/2018.
- WorkSafe Health and Safety at Work, Quick Reference Guide, 12/2016.

These documents are available at

[www.worksafe.govt.nz](http://www.worksafe.govt.nz)

### > Handling & storage

Take care when transporting, handling, and storing IBS Showerline sheets to avoid damaging the sheets.

Unload IBS Showerline sheets by hand and carry on edge. If unloading mechanically, ensure there is a minimum of two well-spaced supports or supported with a pallet to avoid excessive bending or sagging. A spreader bay may be needed when using a crane.

If stored on-site, stack IBS Showerline sheets flat on a dry surface and at least 150 mm off the ground. Cover the sheets.

The dunnage strapped to the bottom of the packet is for transport only and is not suitable to be used for on-site storage.

Ensure the area where the IBS Showerline is stored is dry, well-ventilated, and out of direct sunlight.

### > Tools required

- hole saws (tungsten carbide)
- speed bits
- drill
- jig saw (tungsten carbide)
- scribing knife
- utility knife
- bench saw (tungsten carbide)

- soft faced mallet
- cartridge gun.

### > Other products required

#### Adhesive

Adhesive must be MS construction grade and waterproof, such as Fix All 220 MS or Bostik Safe Fix Adhesive

Depending on use, the adhesive must also be:

- heat resistant, where situated behind heat sources such as hobs
- flexible food grade silicon adhesive where used in food preparation areas.

#### Double-sided foam tape

Tape may be used to support the IBS Showerline sheets as an interim measure while awaiting the adhesive to cure.

IBS recommends Gator double-sided tape.

#### Sealant

Sealant must be waterproof and antifungal, such as Fuller 770 Sanitary Silicone or Bostik Safe Seal Sealant.

#### Trims

PVC or aluminium trims may be used for internal and external corners, junctions to fittings or fixtures and as a finish to edges.

Note:

All products to be used in accordance with the relevant suppliers' guidelines.

# INSTALLATION INSTRUCTIONS



## > Substrate preparation

IBS Showerline may be fixed to most substrates, and directly to framing. Direct fixing to concrete or concrete masonry is not recommended. Timber battens or an overlay of suitable substrate is necessary for installations over DPC.

Check the substrate is level and true.

Ensure all surfaces are clean, dry, smooth and free from dust, grease, solvent, wax. Lightly sand glossy surfaces to remove sheen.

Ensure adequate framing support to all edges and where penetrations are made for plumbing fixtures

Where IBS Showerline sheets are to be glued directly to timber framing, check that the moisture content of the timber is no more than 18%.

## > Protective coating

The protective coating should not be removed until 24 hours after installation. However, around the edges, the protective layer will need to be removed to enable trimming of the boards, creation of openings or installation of trims.

## > Dry layout

Complete a dry layout prior to applying any adhesive. A dry layout is important to ensure that the final placement of the IBS Showerline sheets is square and true. It will highlight if adjustments are needed to walls or if sheets need to be trimmed to accommodate wall, floor or ceiling alignment.

Take account of placement and sheet size to ensure the sheet joins meet on a stud if applying to framing.

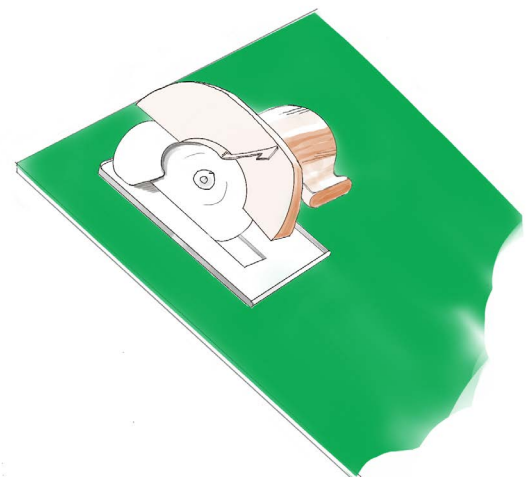
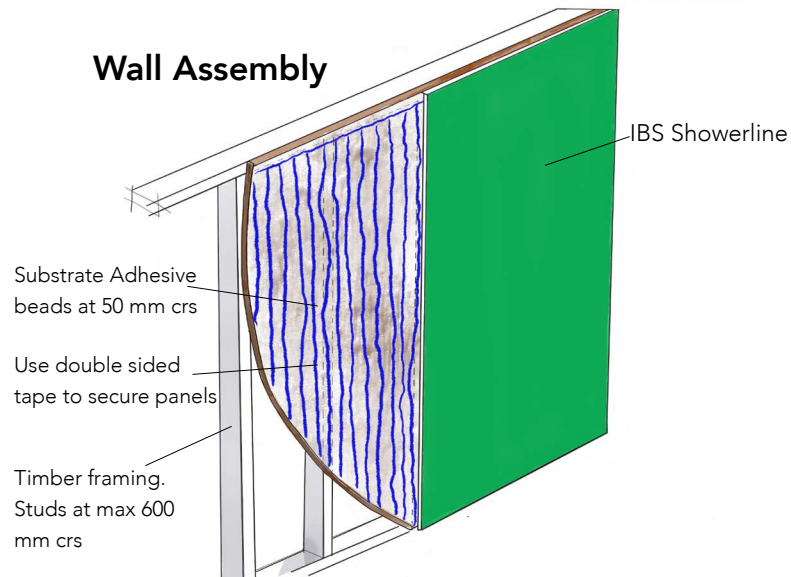
When completing the dry layout ensure that the sheets are installed vertically, i.e., not sideways.

Ensure allowances are made for trim installation.

## > Trimming sheets

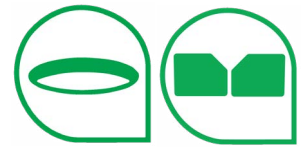
Cut IBS Showerline sheets using standard wood working tools like a table saw or circular saw with a fine-tooth blade (60 tooth or higher) to provide a clean, smooth cut. Apply painter's tape to the line of cut to minimise chip out and to protect the sheet surface.

## Wall Assembly





# INSTALLATION INSTRUCTIONS



## > Creating openings

To create openings for outlets and switches, mark the area to be removed. At the corner, drill a 15-18 mm diameter hole and cut the remainder of the hole with a fine-tooth jigsaw. Cut from the reverse side as a jigsaw can create scratches to the surface finish.

For circular holes, mark out the area to be removed and drill a series of holes as close as possible to the other using a sharp 3.5 mm – 5.0 mm speed bit. Finish off with a utility knife and push waste material through. Alternatively, a sharp, fine-toothed hole saw of the correct diameter may be used.

## > Gluing

Wipe the back surface of the IBS Showerline sheet with a damp cloth.

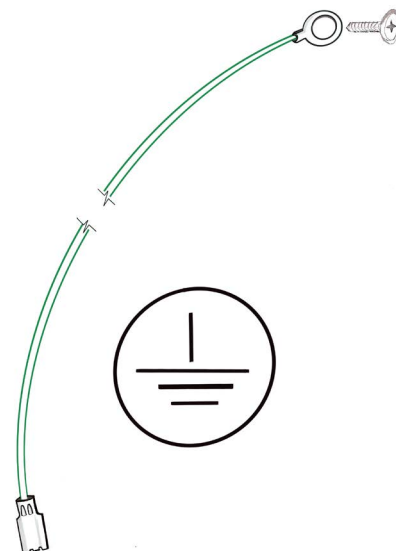
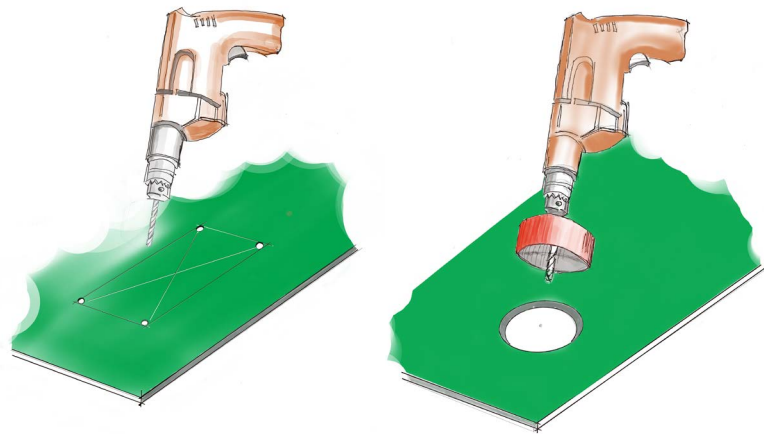
If installing over an existing substrate or directly to framing, apply double-sided foam tape to the back of the sheet around the perimeter, followed by a continuous 5 mm bead of adhesive, and apply a 5 mm bead of adhesive in a pattern with voids no greater than 50 mm.

If installing directly over timber framing, apply double-sided foam tape to the framing, followed by a continuous 5 mm bead of adhesive. When placing the sheet, ensure all sheet edges (horizontal and vertical) have substrate support. Press the sheet in place. Apply pressure evenly across the sheet.

Remove excess adhesive while it is still wet, using a damp cloth.

## > Electrical earthing

IBS Showerline has an aluminium face, which is conductive to electricity. In situations where there is any kind of power point, switch, light fitting or wire running behind the sheet, an earth connection must be made. IBS recommends using a crimp lug (a simple screw connector) that connects to a bonding wire which runs down the back of the sheets. IBS recommends that the installation of the earthing be carried out by a registered electrician. As a minimum a registered electrician should confirm that the earthing has been correctly installed.



Earthing (ground) strap

# INSTALLATION INSTRUCTIONS

## > Tiling around a shower or bath base

### Shower trays

Overlap the top edge of the shower tray, while maintaining an open gap of approximately 5.0 mm (anti-capillary) between the edge of the shower tray and the sheet. Apply a bead of silicon to the upper edge of the tray lip or flange before the sheet is installed.

### Bath or basin edge

Most new baths or basins come complete with a raised lip or flange on the top edge. Overlap the lip or flange, while maintaining an open gap of approximately 5.0 mm (anti-capillary). Apply a bead of silicon to the upper edge of the lip or flange before the sheet is installed.

If your bath does not have either a raised lip or flange, a proprietary flashing is the simplest solution to waterproof these junctions. Ensure the flashing has sufficient cover over the fixture edge.

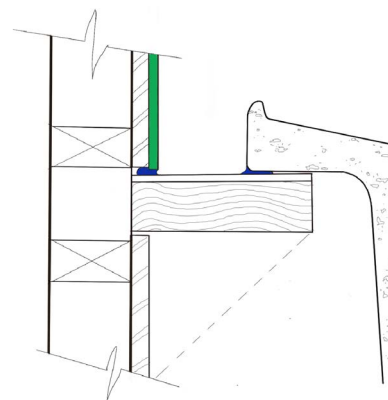
## > Sealing wet area

Apply a thin bead (2.0 mm - 3.0 mm) of sealant to the connecting edge of each sheet on both vertical and horizontal edge profiles.

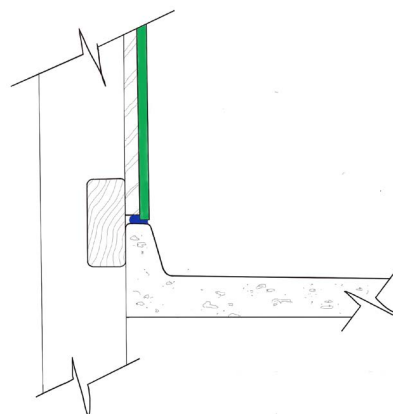
Apply a thin bead of sealant along cut edges or edges placed in corners, if not using trims.

Apply sealant in the trim channel if corner trims are used.

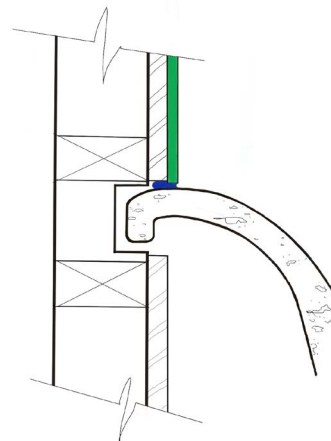
Where possible remove excess silicon before it cures.



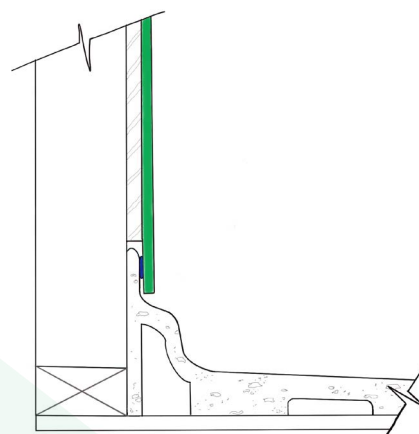
**Overmount wall-bath/basin detail**



**Wall-vanity junction**



**Rebated wall-bath edge seal**



**Wall-shower tray junction**



# INSTALLATION INSTRUCTIONS

## > Trimming

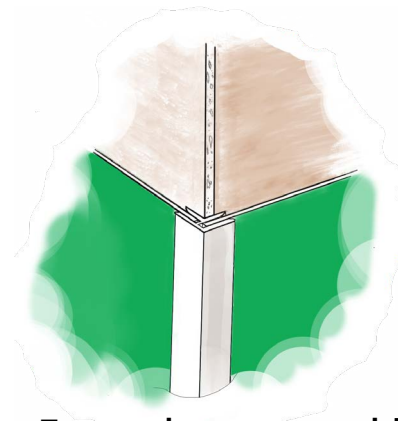
Attach inside/outside corner trims with adhesive to the substrate, using a small bead of adhesive.

Apply a bead of sealant into each of the channels of the trim to prevent water reaching the substrate.

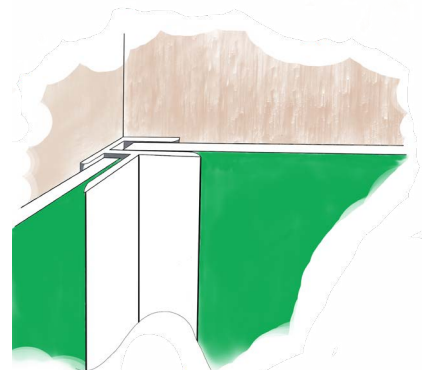
Attach universal J trims (to finish the terminal end of sheets) by sliding into place on the sheet's edge.

Do not apply adhesive within a few centimetres of the edge of the sheet. Apply a bead of sealant into the receiving channel of the trim and press into place.

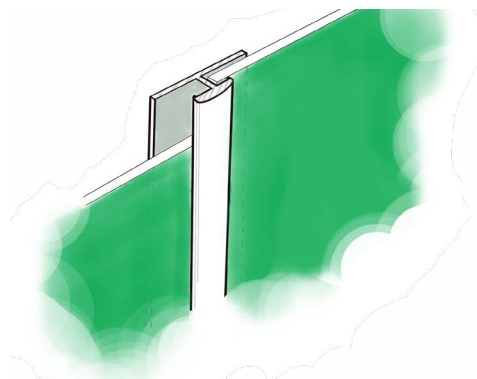
Attach L trims (to cover an old existing exposed tiles) by pressing the trim into place with a bead of sealant on both the sheet and the substrate.



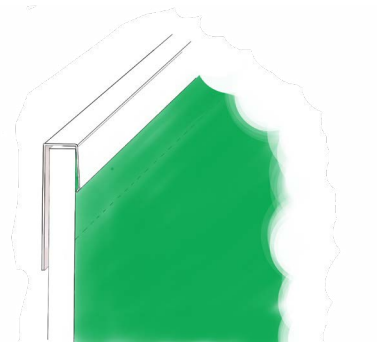
**External corner mould**



**Internal corner mould**



**Panel vertical jointer**



**Top finishing mould**





# MAINTENANCE

## CARE & MAINTENANCE

When cleaning, check to ensure that the sealant and fixings are in place and the IBS Showerline sheets have not moved.

IBS Showerline sheets should be regularly cleaned. If the sheets are soiled with water-soluble dirt and stains, a simple solution of 5% detergent and warm water should be sufficient to remove the stain. Avoid the use of steel wool or abrasive cleaning products.

For difficult or non-water-soluble stains, a household cleaning solution may be used. Test clean in an inconspicuous area before use. Do not use abrasive, aggressive substances, chloride-based cleaning products, or solvents, including cream type cleaners.

Commercial cleaners, that are mixed on-site, must not be used.

Use of any of these cleaners will void the warranty.





## HOME OF SUSTAINABLE BUILDING PRODUCTS

Sustainability covers all facets of business from sourcing, to manufacture and handling of waste, with a focus on long term sustainable products for the industry.

IBS selects products from suppliers that are committed, in the long term, to sourcing and manufacturing their products sustainably. We also look for suppliers and manufacturers that have a commitment to fair employment practices.

In NZ, IBS looks to minimise waste, recycle and maximise the use of recyclable packaging.

We offer a range of panel products for use in many different end uses

### Structural Plywood

Decorative Ply

PRIMAaqua

PRIMAalpha Groove

Rigid Rap

Hardboard

Softboard

Formply

### Uncertified Plywood

OSB

Wet Wall Linings

PRIMAflex

CUT Panels

Marine Ply

Panel Brace Line