

Flat or Side Moulded Acrylic Shower Wall Liner Installation Instructions

Before Installation please check that your wall liner is undamaged

- Check to ensure the shower tray has been installed in accordance with the Tray Installation Instructions. The tray must be level to achieve optimum results
- Your Shower has been designed for walls lined with new 10mm Standard or Aqualine Gib board and Villa Board. **Ensure the area being covered by the Wall liner is not Gib stopped, sanded, sealed or painted – The Showerbond adhesive will not ad-here to these surfaces.**
- Do not remove the protective film from the wall liner until the installation is complete
- Only use the Showerbond adhesive supplied, failure to do so will void your warranty
- Ensure that any plumbing outlets are situated as not to obstruct the door when opened.

INSTALLATION

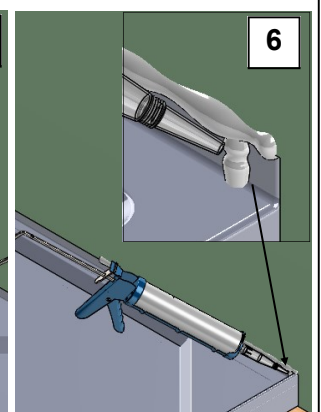
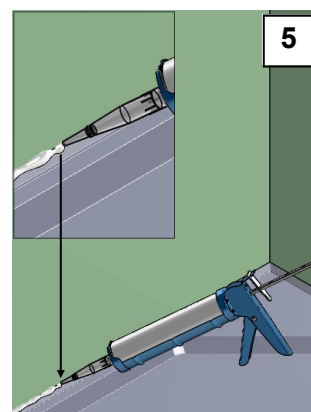
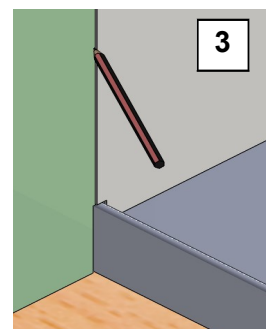
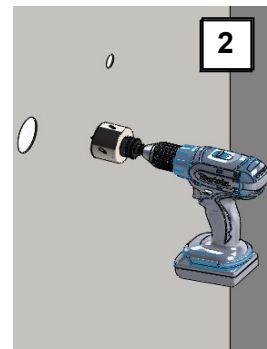
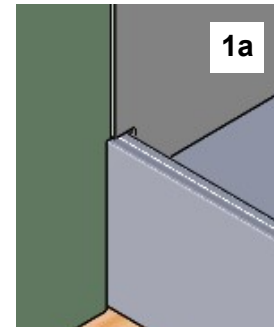
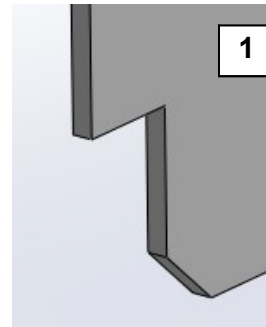
1. Trial fit the wall lining by offering it into the rear corner of tray. The liner must not protrude the front edge of the shower tray as this may affect the door installation.

If installing the wall liner onto a tray that has upstands on all four sides there may be a requirement to notch the bottom corners of the liner for correct fitment (see fig 1a)

If the tray is installed level and the walls are plumb the liner should sit hard down to the tray surface. If the wall liner does not sit flat on the tray it may be scribed and trimmed using a hand plane or sandpaper

Caution: Trimming the Wall liner will reduce its height, some discretion will be required to determine the amount of trimming possible

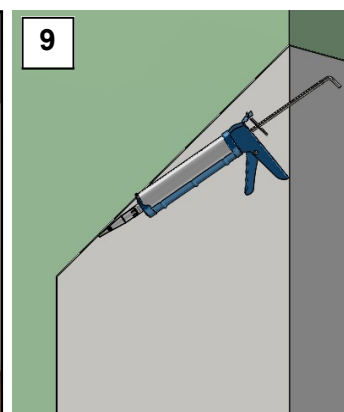
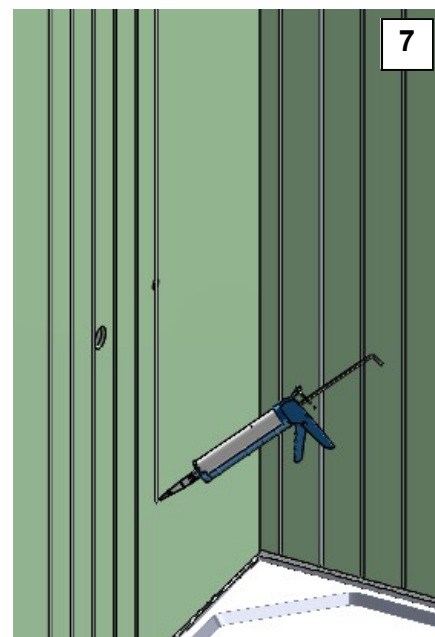
2. Carefully measure and cut out the wall liner for tap-ware. (refer to cutting and drilling instructions on next page)
3. Using a pencil mark a line around the perimeter of the wall lining. Ensure the liner doesn't protrude over the front edge of the tray as this may effect the door set installation
4. Ensure wallboard and rear of wall liner are free from dirt, dust and any contaminants. (To reduce static wipe the rear of the liner with a damp cloth).
5. Apply a **continuous** bead of NG silicone sealant 10mm in diameter along the inside edge of the Tray Upstand. Apply the sealant to the top half of the upstand to eliminate it squeezing out under liner when fitted.
6. For a trays without upstands on all four sides apply a vertical bead of NG silicone 20mm in from the front edge the full height of the Tray upstand.



INSTALLATION CONTINUED

7. Using the supplied Shower Bond adhesive apply 5-6mm beads in vertical lines at 100mm spacing, staying 20mm in from the marked outline of the wall liner.
8. Place wall lining into position and press firmly onto adhesive over entire surface.
Installation of liner must be complete within 15 min to avoid premature curing of adhesive.
8. Wipe off any excess sealant or adhesive that may have oozed out
9. Seal the top edge of the wall liner with a suitable sealant. Bear in mind if painting the Gib surface use a paintable sealant. Masking the area will ensure a neat finish

The installation of the enclosure may begin immediately or as required.



CUTTING AND DRILLING

- Hacksaw or Jigsaw with a minimum of 18 teeth per inch.
- Holes up to 12mm in diameter can be drilled with standard twist drill with a reduced cutting angle.
- Holes larger than 12mm diameter can be cut using a hole saw.
- Edges can be finished with medium grit sandpaper or planed with a hand plane.



Clearlite Bathrooms | Athena Bathrooms
54-58 Hillside Rd, Glenfield, Auckland
Ph (09) 4443780
Email info@clearlite.co.nz | info@athena.co.nz
Clearlite.co.nz | Athena.co.nz