

## Valencia™ Elite Round Sliding Shower - 1200x900mm

The Valencia Elite 12x9 Round Sliding Shower combines exceptional performance with ease of installation. Beautifully engineered, this shower is available in a range of finishes and wall options. The enclosure features twin opening doors boasting 6mm toughened safety glass with Englefield CleanLess® glass treatment. The Quick-Fit low profile tray features an ultra high 40mm upstand for maximum watertightness, ensuring long lasting performance.



Note: Tapware and accessories illustrated in photography are not included

**Shower Options**

**Frame:** Black, White, Polished Silver, Satin Silver.  
**Size:** 1200x900mm.  
**Wall:** Corner Contour Plus, Side Recessed, Flat or Tile Option.  
**Tray:** Centre waste.  
**Height:** 2000mm (1930mm without tray).

**Material/Finish**

Frame - powder coated aluminium (black, white) - anodised aluminium (polished silver, satin silver)  
 Wall - Duracryl acrylic  
 Tray - fibreglass reinforced acrylic  
 Glass doors & returns - 6mm toughened safety glass (AS/NZS 2208 compliant) with Englefield CleanLess® glass treatment. 7mm adjustment in rollers.

**Included Components**

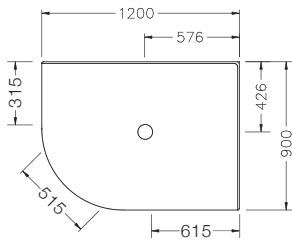
Valencia Elite Doors and Returns. Flat or moulded wall (NOTE: Tile option does not include acrylic wall or tiles). Acrylic wall finishing strips. Quick-Fit Low Profile Tray. Chrome Easy Clean Trap\* (NZ) or Hi-Flow Waste (Aus). Adhesive and Sealant pack (NZ).

**Optional Accessories**

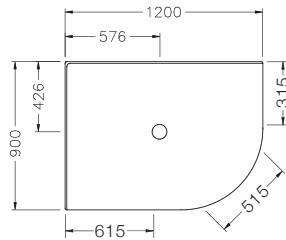
Hi-Flow Waste Outlet.

\*Black Easy Clean Trap provided with black frame showers

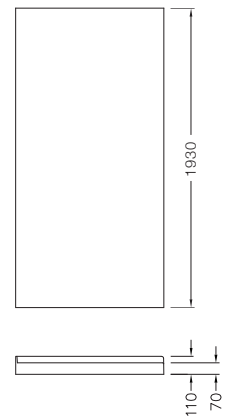
1200 x 900 Left Hand



1200 x 900 Right Hand



Front View (Generic)



**Product Codes**

1200 x 900mm	White		Polished Silver		Satin Silver		Black	
	Left Hand	Right Hand	Left Hand	Right Hand	Left Hand	Right Hand	Left Hand	Right Hand
Corner Contour Plus Wall	706764A-0	706766A-0	706764A-SHP	706766A-SHP	706764A-SS	706766A-SS	706764A-BL	706766A-BL
Flat Wall	706765A-0	706767A-0	706765A-SHP	706767A-SHP	706765A-SS	706767A-SS	706765A-BL	706767A-BL
Side Recessed Wall ¶	706764A-CRW-0	706766A-CRW-0	706764A-CRW-SHP	706766A-CRW-SHP	706764A-CRW-SS	706766A-CRW-SS	706764A-CRW-BL	706766A-CRW-BL
Tile Wall	706823A-0	706824A-0	706823A-SHP	706824A-SHP	706823A-SS	706824A-SS	706823A-BL	706824A-BL

**Note:** ¶ For Side Recessed walls the recessed feature will be on the 1200mm leg. The enclosure needs to be ordered as components to have the feature on the 900mm leg. Acrylic wall liner part number: 705030A-0.



Trusted in New Zealand Since 1982

**New Zealand**

133 Diana Drive, Glenfield, Auckland, NZ  
 PO Box 100-146 NSMC, Auckland, 0745  
 Ph: 0800 100 382 Fax: 0800 66 44 88  
[www.engefield.co.nz](http://www.engefield.co.nz)

**Australia**

PO Box 154, Clifton Hill, Vic 3068  
 Ph: 1800 ENGLEFIELD (1800 364 533)  
[www.engefield.com](http://www.engefield.com)

All measurements shown are in millimetres. Sizes are approximate.

Feb 2020  
 1381757-A04-E