

ENVIRA[®]

BY NIAGARA

APRIL 2024 EDITION

UPDATED ON 16 APR. 2024 VERSION 03.08



Rusticated TECHNICAL MANUAL & INSTALLATION GUIDE





0800 36 78 46 | sales@niagara.nz | www.niagara.nz
Niagara Sawmilling Company Limited



Rusticated **TECHNICAL MANUAL**
& **INSTALLATION GUIDE**



ENVIRA[®]

BY NIAGARA



ENVIRA RUSTICATED WEATHERBOARDS AND COMPONENTS ARE ENTIRELY PRODUCED IN NEW ZEALAND BY NIAGARA.

PRODUCT DETAILS

- Envira Weatherboard System is suitable as an Acceptable Solution E2/AS1 under the NZ Building Code.
- Kiln dried to between 10-14% moisture content.
- Treated to H3.1 using a new generation organic preservation system.
- Coated with factory applied new generation primer.



Niagara produces and distributes other quality building products.
View the full collection online: www.niagara.nz

Every effort has been made to ensure the information given in this booklet complies with existing building standards and recognised codes of practice at the current date of publication. No responsibility is accepted for any errors and omissions in this booklet or for any work or specifications based on this information.

GRADE GUIDE

Envira Weatherboard System is produced from kiln dried radiata pine in finger jointed or dressing grade.

Finger Jointed: In nominal lengths 6.1m made up of clear radiata glued and joined. Treated to H3.1 and factory primed.

Dressing Grade: A high grade board with sound tight knots and other natural characteristics. Treated to H3.1 and factory primed. In random lengths.

Solid Clears: Available on request. Generally clear on all four sides apart from minor imperfections. Treated to H3.1 and factory primed. In random lengths.

Any questions?

Freephone 0800 36 78 46
www.niagara.nz



The mark of
responsible forestry
FSC® certified products
available on request

GENERAL CONTENTS

Rusticated components	6
Rusticated set-out guides	7

Section 1 General	8
1.1 Scope and general comment	8
1.2 Storage	8
1.3 Handling	8
1.4 Keep dry	8
1.5 Wall underlay	8
1.6 Flashings	8
1.7 Sealants	8
1.8 Air seals	8
1.9 Building preparation	8
1.10 Wall cladding cavities	8
Weatherboard measurement table	8

Section 2 Installation	9
2.1 Envira weatherboards fixings and fixing method	9
2.2 Joins	9
2.3 External box corner	9
2.4 Internal box corner	10
2.5 Aluminium window and door jambs	10
2.6 Aluminium window and door sills	10
2.7 Aluminium window and door heads	10
2.8 Timber window and door openings	10

RUSTICATED DRAWING DIRECTORY

Rusticated Direct Fix

Foundation Timber	13
Foundation Concrete	13
Door Sill	14
Door Jamb	14
Door Head	14
Window Sill	15
Window Jamb	15
Window Head	16
Soffit	16
External Corner	16
Internal Corner	17
Meter Box Head	17
Meter Box Jamb	18
Meter Box Sill	18
Pipe Penetration	18
Fascia Eaves	19
Apron	19
Parapet Cap	20
Stucco – Below	20
Stucco – Internal Corner	21
Stucco – External Corner	21
Profiled Metal – Above	22
Profiled Metal – Below	22
Profiled Metal – Abutting	23
Profiled Metal – Internal Corner	23
Profiled Metal – External Corner	24
Masonry Veneer – Below	24
Masonry Veneer – Abutting	25
Masonry Veneer – Internal Corner	25
Masonry Veneer – External Corner	26
Water Proof Deck – Above	26
Mid-Floor Junction	26

Section 3 Nailing	11
3.1 Nail selection	11
3.2 Nailing schedule	11
3.3 Nailing guidelines	11
3.4 Rusticated temporary fixing method	11
3.5 Screw Fixing Option	11

Section 4 Painting and Maintenance	12
4.1 Moisture content	12
4.2 Preparation	12
4.3 Top coat selection	12
4.4 Painting	12
4.5 Maintenance	12

Technical Drawings	13 -41
Direct fix	13 - 26
Cavity fix	27- 41

Envira Weatherboard System warranty	42
----------------------------------------------------	-----------

Rusticated Cavity Fix

Foundation Timber	27
Foundation Concrete	28
Door Sill	28
Door Jamb	29
Door Head	29
Window Sill	30
Window Sill (Sill Support Bar)	30
Window Jamb	31
Window Head	31
Soffit	32
External Corner	32
Internal Corner	32
Meter Box Head	33
Meter Box Jamb	33
Meter Box Sill	33
Pipe Penetration	34
Fascia Eaves	34
Apron	34
Parapet Cap	35
Stucco – Below	35
Stucco – Internal Corner	36
Stucco – External Corner	36
Profiled Metal – Above	37
Profiled Metal – Below	37
Profiled Metal – Abutting	38
Profiled Metal – Internal Corner	38
Profiled Metal – External Corner	39
Masonry Veneer – Below	39
Masonry Veneer – Abutting	40
Masonry Veneer – Internal Corner	40
Masonry Veneer – External Corner	41
Water Proof Deck – Above	41
Mid-Floor Junction	42

RUSTICATED COMPONENTS

All H3.1 and factory primed



RUSTICATED WEATHERBOARDS

Envira Rusticated	142x18mm	Finger Jointed	6.1m
Envira Rusticated	187x18mm	Finger Jointed	6.1m
Envira Rusticated	230x18mm	Finger Jointed	6.1m
Envira Rusticated	142x21mm	Dressing Grade	Random length
Envira Rusticated	190x21mm	Dressing Grade	Random length

BOX CORNERS PREFABRICATED

Envira External	100x100mm	Finger Jointed	5.4m
Envira Internal	100x100mm	Finger Jointed	5.4m

FACING BOARDS

Envira Facing	66x18mm	Finger Jointed	5.4m
	90x18mm	Finger Jointed	5.4m
	115x18mm	Finger Jointed	5.4m
	138x18mm	Finger Jointed	5.4m
	185x18mm	Finger Jointed	5.4m

Also available in 30mm

SCRIBER

EnviraScribe, pre-cut	27x18mm	Finger Jointed	3.0m
-----------------------	---------	----------------	------

To suit 187x18

RUSTICATED ACCESSORIES

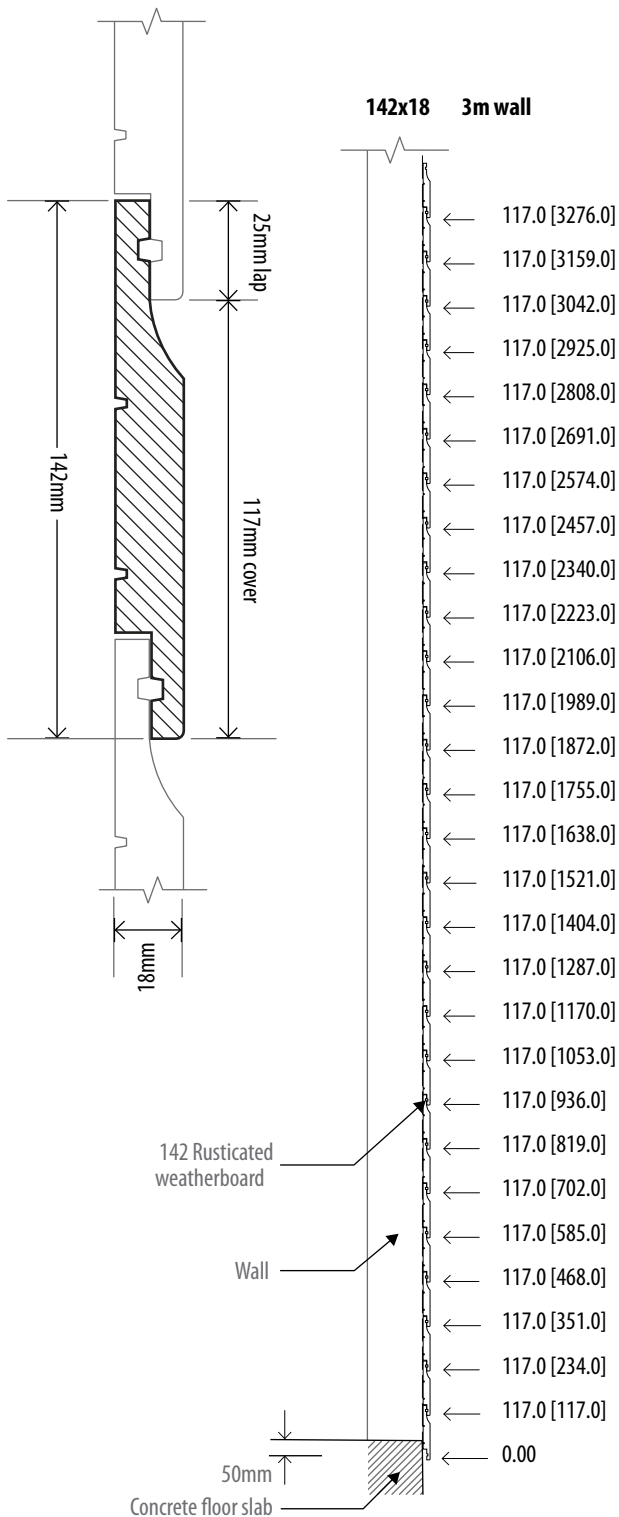
Envira Rustic Plug	21x8.5mm	To suit 187, 142x18	40mm
	23x11mm	To suit 190, 142x21	40mm
Envira Sill	90x42mm	Finger Jointed	5.4m
	65x42mm	Finger Jointed	5.4m
Envira Eaves Mould	40x27mm	Finger Jointed	5.4m
	18x18mm	Finger Jointed	5.4m
Envira Head Trim	82x38mm	Finger Jointed	5.4m
Envira Door Sill Trim	90x19mm	Finger Jointed	5.4m

BATTEN

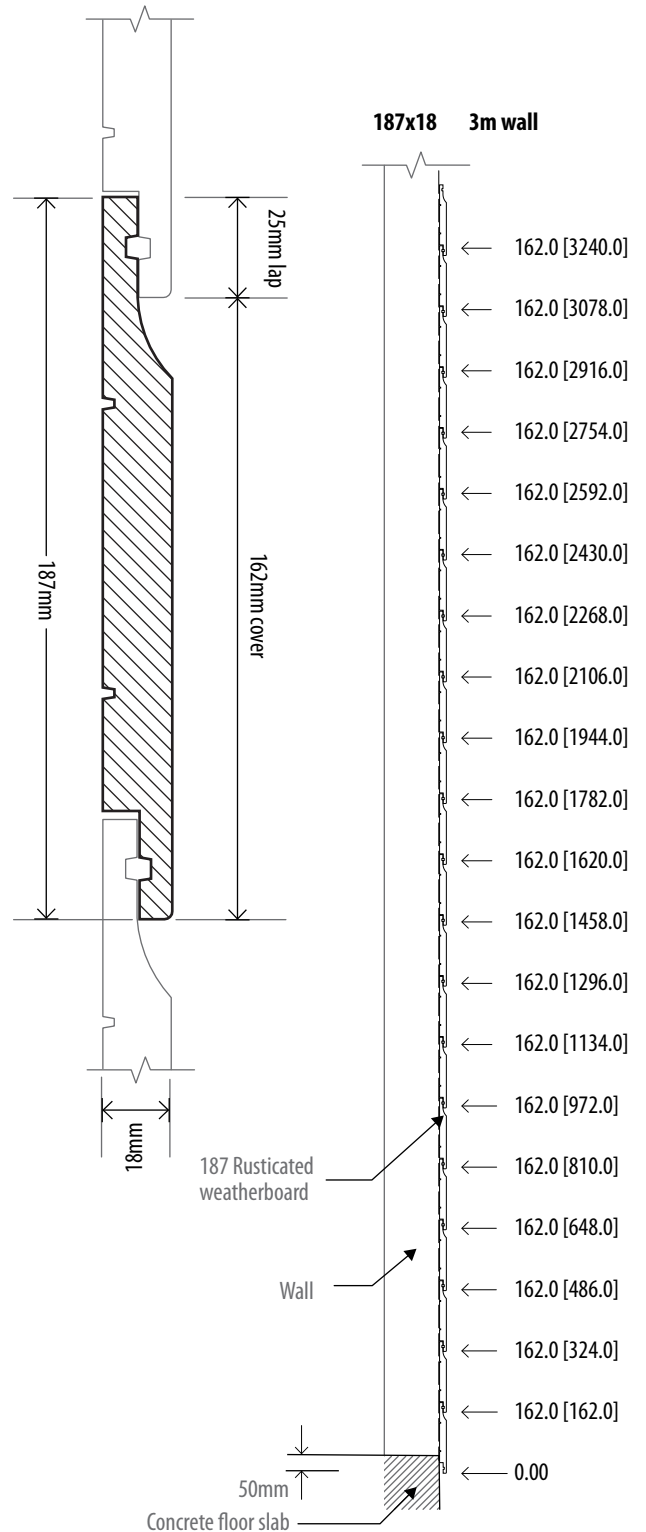
Envira Cavity Batten	44x20mm	Finger Jointed	5.4m
----------------------	---------	----------------	------

ENVIRA RUSTICATED SET-OUT GUIDES

142 Rusticated Weatherboard



187 Rusticated Weatherboard



GENERAL

1.1 Scope and general comment

These instructions are specific and can be used for buildings that fall within the scope of NZS 3604:2012 Timber Framed Buildings and E2/AS1. Buildings that have a weathertightness risk score of more than 6 as assessed in E2/AS1 section 3 will require a drained and ventilated cavity.

Niagara's Envira Weatherboard System must be fixed to framing that is dry (<20% mc), straight and stable. Flashings as shown in the installation CAD drawings must be used.

All building sites are different and while these instructions are detailed, only those details that apply to your specific building site should be used.

When used in combination, timber framed windows and timber cladding are not covered by E2/AS1 and application for an alternative solution to New Zealand Building Code Clause E2 must be made to the Building Consent Authority.

1.2 Storage

Correct storage of Envira Weatherboard System components prior to installation is critical. Store as follow:

- in a dry well ventilated area
- on a flat surface supported every meter along the length of the product
- clear of the ground by at least 150mm
- protected from the elements including direct sunlight and rain
- if rising damp is likely, place a moisture barrier under the stack
- use inside storage where available

1.3 Handling

Unload Envira Weatherboard System products carefully from truck by hand or use a mechanical lifting device. Never drag boards across the ground. To avoid bending, always carry individual boards on their edge. During handling (cutting, installation etc.) care should be taken to avoid damaging the surface of the board.

1.4 Keep dry

Envira Weatherboard System products are made from kiln dried timber. Timber is hygroscopic and it will absorb moisture in a damp environment and release it in a dry environment. Primers will not stop moisture uptake. If timber absorbs moisture prior to installation, some dimensional swelling may occur, this will disappear when the timber returns to its original moisture content.

If product shows signs of dimensional swelling, allow time for it to dry and return to the manufactured dimensions before installation.

1.5 Wall underlay

Use only underlays that meet the requirements of E2/AS1 Table 23. Underlays are a secondary protective barrier against weathering and must be installed in accordance with E2/AS1 section 9.1.7.

1.6 Flashings

Refer to NZS 3604 section 4 and E2/AS1 Table 20 for durability requirements and E2/AS1 section 9 for flashing design and fabrication details.

As recommended in E2/AS1, window and door suppliers are responsible for head flashings. A layer of kraft paper is required between the flashing and timber framing where the timber has been treated with a copper-based treatment. Check the flashing manufacturer's recommendations in all cases.

1.7 Sealants

All sealants must be suitable for exterior use and while they will assist with providing weathertightness at laps and joints they must not be relied on to provide total protection.

1.8 Air seals

Air seals are a barrier that prevent air flowing through the cladding or circulating within the cavity, from entering the building. Air seals are required where a hole or penetration through the external cladding occurs - windows, doors, pipes, meter boxes etc. See E2/AS1 for complete building air seal requirements.

A backing rod of a suitable diameter must be installed in the gap between the window/door reveal, meter box or pipe and the opening frame prior to applying the sealant. Take care not to over fill the space with sealant.

Backing rods and sealants must be used in accordance with the manufacturer's instructions. See E2/AS1 for details.

1.9 Building preparation

NZS 3604 sets out the requirements that timber framing must meet including sizing, spacings, straightness (Table 2.1) and moisture content. All framing must meet these requirements before installation of Envira Weatherboard System can begin.

Ensure all openings are framed out with the correct clearance between the trimmed opening and the window/door/meter box frame.

1.10 Wall cladding cavities

If the weathertightness risk score is higher than 6 a drained and ventilated cavity will be required between the underlay and Envira rusticated weatherboards.

If a cavity is required, structurally fix Envira treated cavity battens to the framing in accordance with BRANZ Bulletin issue 673, (June2022). Cavity construction, including flashing and vermin proofing, must be in accordance with the requirements as set out in E2/AS1 and NZS 4229.

Envira rusticated weatherboard measurement table

Size	Profile	Grade	Cover	Lap	Length	Lm/m2
142 x 18	Rusticated	Finger Jointed	117mm	25mm	6.1m	8.54
187 x 18	Rusticated	Finger Jointed	162mm	25mm	6.1m	6.17
230 x 18	Rusticated	Finger Jointed	205mm	25mm	6.1m	4.88
142 x 21	Rusticated	Dressing Grade	117mm	25mm	Random	8.54
190 x 21	Rusticated	Dressing Grade	165mm	25mm	Random	6.06

INSTALLATION

2.1 Envira rusticated weatherboard fixings and fixing method

Position and fix the bottom Envira weatherboard ensuring there is a minimum 50mm overlap below the bottom plate or bearer.

Correct positioning of each successive board (25mm lap) is critical to ensure finishing scribes fit correctly. **Use an Envira rusticated precut scriber as a storey rod to assist in this process. (Keep this rod dry at all times to maintain its correct dimensions.)**

Each Envira weatherboard will be fixed with one nail at every batten or stud, starting in the middle of the board and working to the ends. Single point nailing will allow the board to expand and contract as EMC change occurs. Allow a 3mm expansion gap at the overlap between boards.

Fixings are to be located between 35-40mm above the lower edge of the board penetrating 35mm into the framing or structural batten.

Use 60 x 2.8mm JH hot-dipped galvanised or annular grooved stainless steel nails for fixing either directly into framing or structural battens.

Re-prime the cut ends with two coats of a premium quality timber primer, allowing to dry between coats.

Hand nailing is recommended as nail guns can cause damage to the surface of the board. If a nail gun is used a non-marking attachment should be used to avoid damage to the board surface. Fill with an exterior grade wood filler immediately after nailing. Avoid using nail guns as they can damage the surface of the board. Pre-drill nail holes at all joints and within 50mm of ends.

The top board may have to be cut to suit soffit. Finish detail using an Envira eaves mould.

For screwing option refer 3.5

2.2 Joins

Avoid joining Envira weatherboards whenever possible but if joining is unavoidable, only use 45 degree scarf joints directly over studs or Envira structural battens.

Face the overlapping board away from the prevailing weather direction using one fixing through the overlapping board (pre-drill the hole).

Re-prime the cut ends with two coats of a premium quality timber primer, allowing to dry between coats

Nails should be hand driven and punched below the surface to allow for filling. Prime then fill with an exterior grade wood filler immediately after nailing.

2.3 External box corner

Using 50 x 2.5mm JH hot-dipped galvanised or annular grooved stainless steel nails, fix the Envira External box corner (pre-fabricated) over the Envira rusticated weatherboards. Use two nails at each fixing point. There must be a minimum 50mm cover on both faces of the corner.

Fixings must be located 35-40mm above the lower edge of the overlapping board on every fourth board for 142mm wide weather boards and every third board for 187mm wide weatherboards. For nails near the ends of the corner boards pre-drill the nail holes.

Fit a pre-cut EnviraScribe (30 x 18, 27 x 18) over the weatherboards against the corner boards. Pre-drill holes and using 50 x 2.5mm JH hot-dipped galvanised or annular grooved stainless steel nails, fix the scriber firmly against the box corner. Nail at 450mm centres.

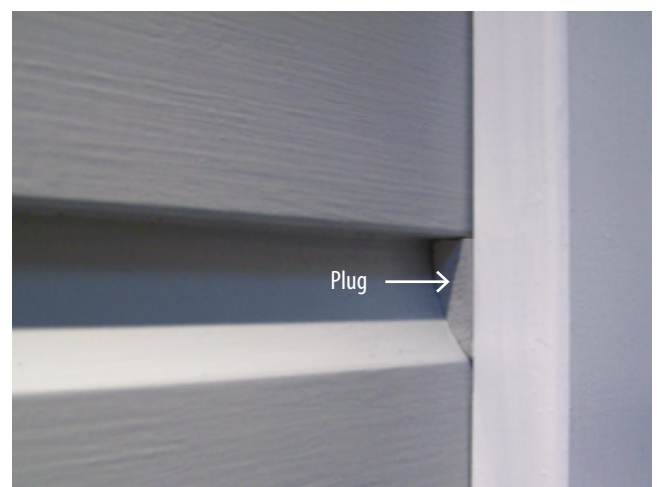
Re-prime the cut ends with two coats of a premium quality timber primer, allowing to dry between coats.

Nails must be hand driven and punched below the surface to allow for filling. Prime then fill with an exterior grade wood filler immediately after nailing.

Envira Rustic Plugs can be used in place of a scriber.



Rusticated scriber →



Plug →

2.4 Internal box corner

Internal corners, direct or cavity must have a flashing behind the cladding provide a minimum 50mm cover to both faces of the corner. Refer to E2/AS1 for full details. Using 50 x 2.5mm JH hot-dipped galvanised or annular grooved stainless steel nails, fix the Envira two piece prefabricated internal box corner over the Envira rusticated weatherboards. Use two nails at each fixing point. The Envira internal box corner provides 100mm cover on both faces of the corner.

Fixings must be located 35-40mm above the lower edge of the overlapping board on every fourth board for 142mm wide Envira rusticated weatherboards and every third board for 187mm wide weatherboards. Use two nails at each fixing point. For nails near the ends of the corner boards pre-drill the nail holes.

Fit a pre-cut EnviraScribe over the weatherboards. Pre-drill holes and using 60 x 2.8mm JH hot dip galvanised or annular grooved stainless steel nails, fix the scribe firmly against the box corner.

Nail at 450mm centres.

Re-prime the cut ends with two coats of a premium quality timber primer, allowing to dry between coats.

Nails should be hand driven and punched below the surface to allow for filling. Prime then fill with an exterior grade wood filler immediately after nailing.

Envira Rustic Plugs can be used in place of a scribe.

2.5 Aluminium window and door jambs

Window and door openings are a high weathertightness risk area and require particular attention to ensure weathertightness is achieved. All window and door openings must be constructed and trimmed in accordance with E2/AS1. All flashings, air seals, underlay and flexible flashing tapes must be in place.

For flashing details refer to NZS 3604 section 4 and E2/AS1 table 20 for durability requirements and E2/AS1 for flashing design and fabrication details. *As recommended in E2/AS1, window and door suppliers are responsible for head flashings.*

The following instructions apply to aluminium windows and doors as set out in E2/AS1 9.1.10 - 9.1.10.8.

All windows must comply with NZS 4211 including consideration of the building location.

The aluminum facing flange must overlap the cladding (Envira weatherboard) by at least 10mm for jambs and at least 8mm for sills.

Fit firmly against the flange either an EnviraScribe or an Envira facing board and EnviraScribe combination. Pre-drill holes in the scribe and fix using 50 x 2.5mm JH hot-dipped galvanised or annular grooved stainless steel nails. Nail at 450mm centres.

Facing board fixings must be located 35-40mm above the lower edge of the overlapping board on every fourth board for 142mm wide weatherboards and every third board for 187mm wide weatherboards. Use two nails at each fixing point. For nails near the ends of the corner boards pre-drill the nail holes.

Direct fixed and cavity fixed cladding applications must have a sill tray flashing a minimum of the full width of the opening.

Re-prime the cut ends with two coats of a premium quality timber primer, allowing to dry between coats.

Nails must be hand driven and punched below the surface to allow for filling. Prime then fill with an exterior grade wood filler immediately after nailing.

Fit air seals around all window and door openings as specified.

2.6 Aluminium window and door sills

The Envira Weatherboard System requires a full width sill tray for direct fixed windows and doors, which meets the requirements of E2/AS1. If an Envira sill (plant on) is to be used, ensure the positioning of the sill does not compromise the sill flashing detail or function. The sill tray must extend at least 8mm behind the line of the aluminium frame.

In a cavity fix application, all doors and windows with a trim opening wider than 600mm require an appropriate sill support bar conforming to EM6, paragraph 9.1.10.5

2.7 Aluminium window and door heads

Direct and cavity fixed aluminium windows and doors require a flashing that meets the requirements of E2/AS1. The flashing must be fitted behind the cladding with a 5mm gap between the bottom edge of the cladding and the horizontal surface of the flashing. If an Envira Head Trim is to be used there must be a 5mm gap between the bottom edge of the head trim and the horizontal surface of the flashing.

2.8 Timber window and door openings

When used in combination, timber framed windows and timber cladding are not covered by E2/AS1 and application for an Alternative Solution to New Zealand Building Code Clause E2 must be made to the Building Consent Authority. Timber window and door installations must include facing boards and scribes when used in combination with the Envira Weatherboard System.

NAILING

3.1 Nail selection

Selection of proper nails is important.

Use Jolt Head (JH) hot-dipped galvanised or stainless steel annular grooved, for fixing either directly into framing or structural batten.

Do not use plain or electroplated nails. Hot dipped galvanising must meet the requirements of AS/NZS 4680:2006.

Please check for updates on Niagara's website - www.niagara.nz

Download 2D drawing files in PDF, DWG or DXF format online.

Bevel Back, Rusticated and Shiplap technical manuals are available for download at www.niagara.nz/brochures

3.2 Rusticated nailing schedule

Timber size (mm)	Envira component	Recommended minimum nail size	Section
142 x 18 / 187 x 18	Rusticated direct fixed weatherboard	60 x 2.80	2.1
142 x 18 / 187 x 18	Rusticated cavity fixed weatherboard	60 x 2.80	2.1
142 x 21 / 190 x 21	Rusticated direct fixed weatherboard	60 x 2.80	2.1
142 x 21 / 190 x 21	Rusticated cavity fixed weatherboard	60 x 2.80	2.1
100 x 100	External and internal box corners	50 x 2.50	2.3, 2.4
All sizes	Facing boards	50 x 2.50	2.5
27 x 18, 30 x 18	EnviraScribe pre-cut scribes	50 x 2.50	2.3, 2.4, 2.5
90 x 42 / 65 x 42	Sills	75 x 3.15	2.6
40 x 27 / 18 x 18	Eaves mould	60 x 2.80	2.1
82 x 38	Head trim	60 x 2.80	2.7
50 x 19	Door sill trim	50 x 2.50	
44 x 20	Cavity batten	60 x 2.80	1.10

3.3 Nailing guidelines

Proper application and nailing practices are essential for maximising the product performance and appearance.

All nailing should be over studs with at least 35mm penetration into the frame.

Nailing should be such that it does not restrict normal seasonal movement, so do not nail through overlapping pieces.

Hand nailing is recommended as nail guns can cause damage to the surface of the board. If a nail gun is used a non-marking attachment should be used to avoid damage to the board surface.

Nails are to be countersunk (punched) by 2mm and must primed immediately then filled to avoid moisture uptake around the nail head*.

Pre-drilling near the ends is recommended as a precaution to avoid the possibility of end splitting. We recommend the use of scarf joints.

Butt joints can be used without an expansion gap, but these must be flashed. Joints should be staggered up the wall. Scarf joints should face away from the prevailing winds.

***Prime all nail holes with a suitable premium exterior wood primer then fill with an exterior grade wood filler.**

Sealants must not be relied upon for primary weather protection, they are used to assist with weathering at joint and laps only. All filled areas must be spot primed prior to top coating.

3.4 Rusticated Temporary Fixing Method

- Envira weatherboards can be brad nailed at the top above the weather groove to temporarily fix the weatherboard in place before face nailing. The brad nails must be galvanised or stainless steel, 32mm long maximum or less, and 2mm diameter or less.
- The brad nail is to be fixed on the **minimum** number of studs necessary to hold the weatherboard in the correct position and no more than one brad nail per stud maximum.
- Pre-drill the envira weatherboard (to avoid splitting) for nail or brad locations within 50mm of the board ends.

3.5 Screw Fixing Option

Envira Rusticated Weatherboards are also able to be fixed by using specifically designed timber weatherboard screws.

These must be either 7G or 8G, length and fixing point is to match the same required when using nail fixings. Screws can be galvanised, or stainless steel if preferred.

Options are:

ECKO T-REX17 8Gx60 /65mm Weatherboard Jolt Screw on both direct and cavity fix.

Simpson Strong-Tie 7Gx65mm Weatherboard Screw on both direct and cavity fix.

All sealing, filling and priming is exactly the same procedure as under 3.3 Nailing guidelines.

PAINTING AND MAINTENANCE

4.1 Moisture content

The primer will not protect against moisture uptake, which can result in dimensional swelling. If swelling or distortion of the timber is evident, the product must be given time to dry out and return to its equilibrium moisture content and manufactured dimensions before any top coats are applied.

4.2 Preparation

- Remove all loose material and dirt.
- Primers will not withstand extended periods exposed to the elements and may require a light sand.
- Sand and spot prime all bare patches or where the factory primer has been damaged.
- Sand smooth and spot prime all filled areas.
- Fill all nail holes with an exterior grade wood filler and seal all notches, end cuts and nail holes with a suitable primer/undercoat or end sealing product such as Envira Fast Dry End Seal.

It is the painter's responsibility to ensure all surfaces are correctly prepared prior to painting including ensuring that the primer is well-adhered to the timber substrate and that all surfaces are in a suitable condition before top coating.

It is recommended that at a minimum the top lap of the boards are coated with top coat approximately 50mm down from the top edge. This will eliminate a primer line showing if the boards move with the seasonal change that can occur. Ideally the boards would receive a full top coat before installation.

4.3 Top coat selection

Use only a premium quality house paint that has a Light Reflective Value (LRV) of 45 or higher and a gloss level of 10 per cent or more.

Note: The higher the gloss level, the higher the durability.

Timber is a natural product and resin is a natural constituent of all timber. Timber painted in dark colours (LRV less than 45) may produce resin bleed.

4.4 Painting

All preparation and painting must be carried out in a good tradesman-like manner and to the current requirements of AS/NZS 2311 Guide to Painting of buildings and the paint manufacturer's data sheet.

Two top coats of quality house paint should be applied within six weeks of the product being installed. If painting does not occur within six weeks of installation, sanding and repriming will be required.

Paint must be applied with the necessary equipment and experience under the appropriate environmental conditions to ensure that the potential of the paint system is maximised.

Total film build, including primer should exceed 100 Dry Micron.

Do not top coat Envira timber products that have moisture-related dimensional swelling. This will help avoid shrinkage lines that may occur in the top coat as the timber returns to its equilibrium moisture content and manufactured dimensions.

4.5 Maintenance

All new buildings will 'settle' and during this process the integrity of the paint system, no matter what type of substrate it has been applied to, may be compromised resulting in minor touch up work being required. If re-priming is necessary, use only a premium quality primer and the original top coat paint for touch up work.

Like washing your car, cleaning your house will help it maintain its good looks for much longer. Airborne contaminants, including salt deposits, which settle on your paint film, can attack the surface and cause premature breakdown. Annual washing of your home will help maintain the fresh appearance of your paintwork.

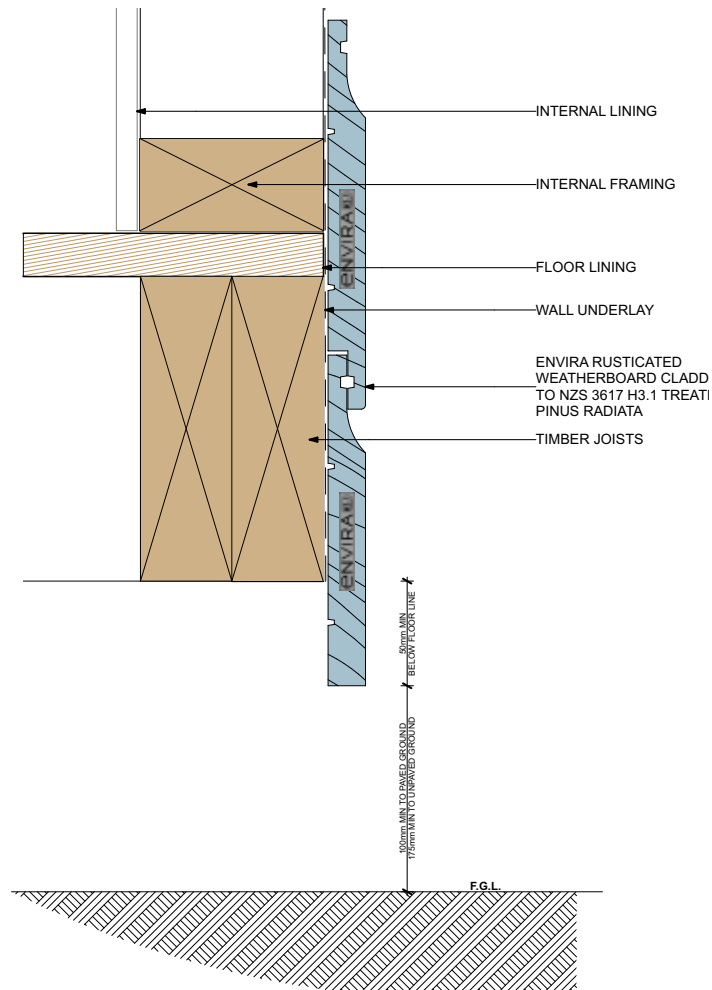
The presence of moss, mould and lichen will hold moisture on the surface longer, promoting further growth of these organisms and increasing the risk of damage to the coating and substrate. As with any painted surface, regular inspection and immediate repairs to areas of flaking or cracked paint are essential and will stop the entry of moisture into the substrate.

Particular attention should be paid to areas of high weathertightness risk such as around windows and doors, checking that flashings and sealants are in good condition and performing as required. Repair immediately if the building weathertightness has been compromised.

RUSTICATED DIRECT FIX

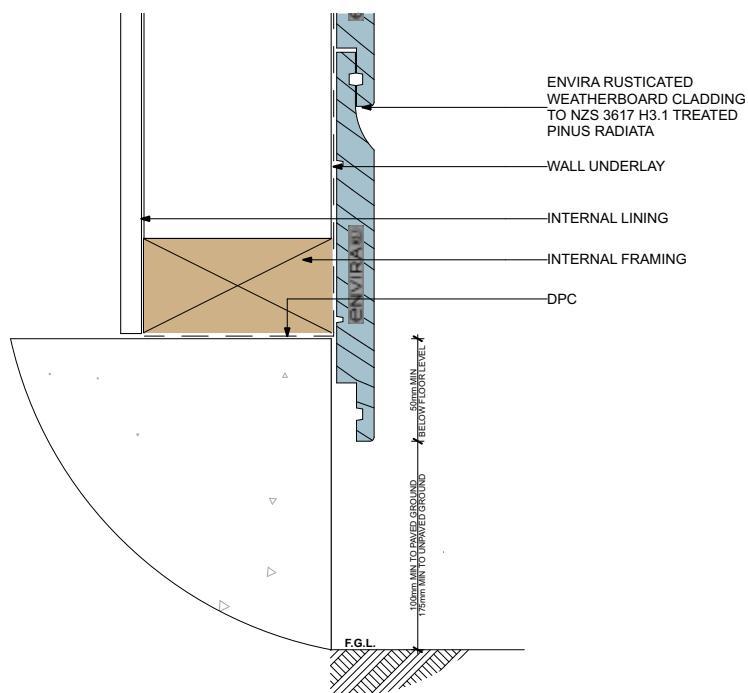
Rusticated Direct Fix Foundation Timber

2001 2D :



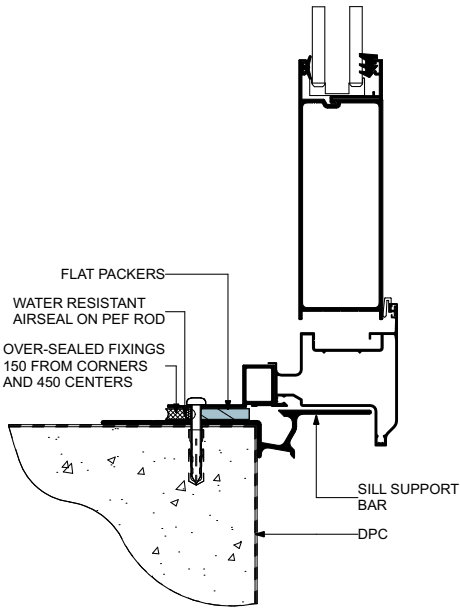
Rusticated Direct Fix Foundation Concrete

2002 2D :



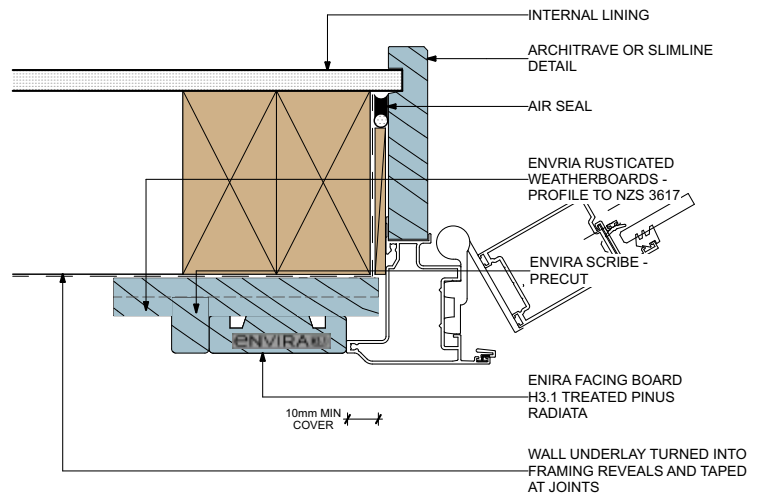
Rusticated Direct Fix Door Sill

2017 2D :



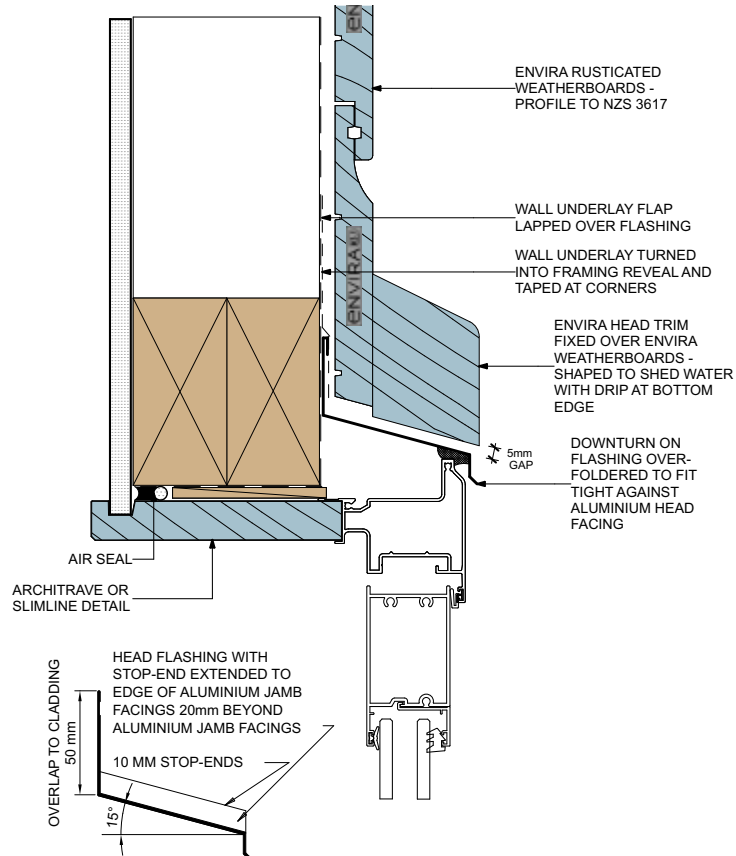
Rusticated Direct Fix Door Jamb

2003 2D :



Rusticated Direct Fix Door Head

2004 2D :

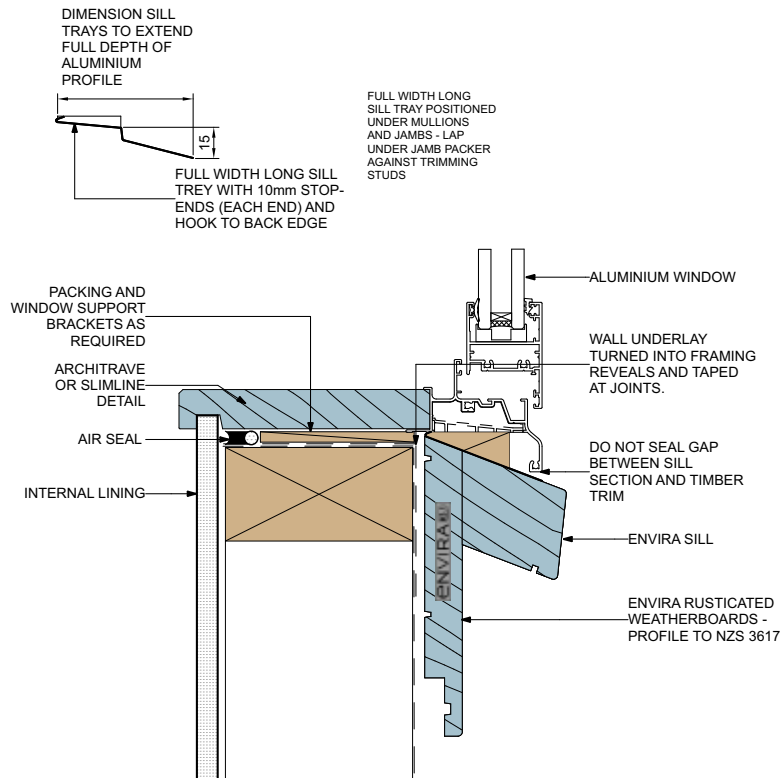


FLASHING DIMENSIONS

DATE: 16/04/2024 check for updates and download 2D files in PDF, DWG or DXF format at www.niagara.nz

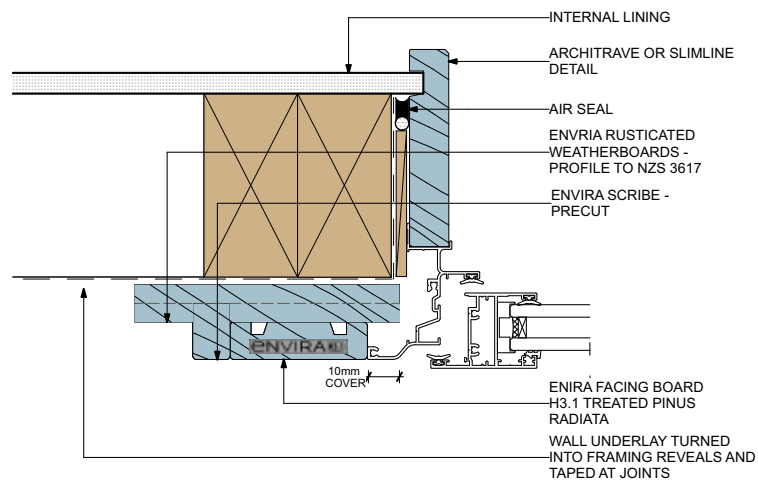
Rusticated Direct Fix Window Sill

2005 2D :



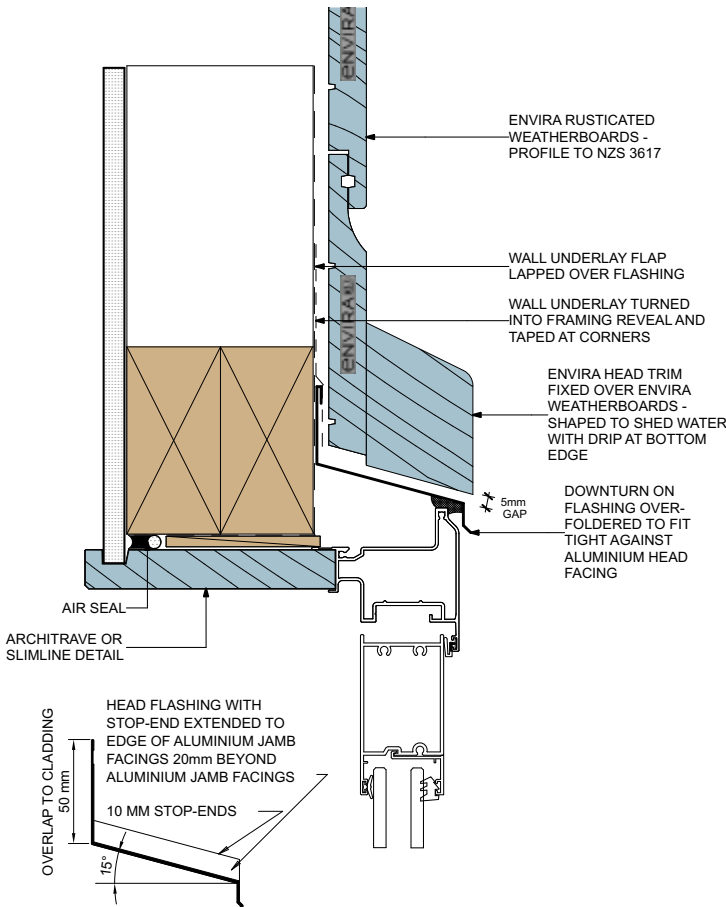
Rusticated Direct Fix Window Jamb

2006 2D :



Rusticated Direct Fix Window Head

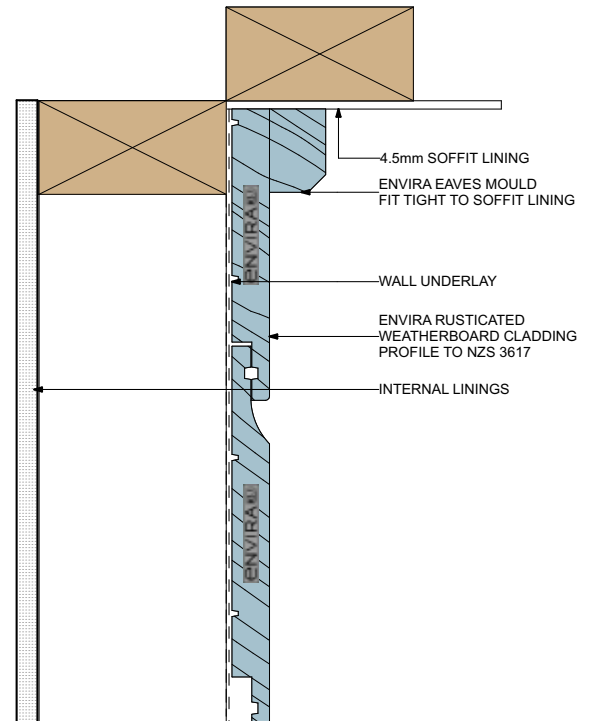
2007 2D :



FLASHING DIMENSIONS

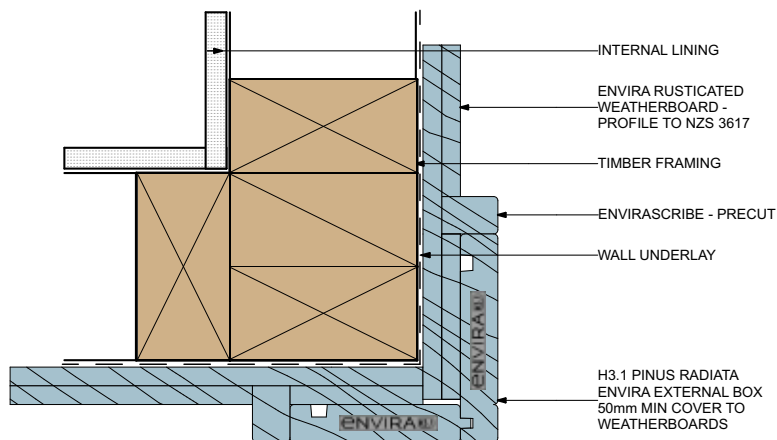
Rusticated Direct Fix Soffit

2008 2D :



Rusticated Direct Fix External corner

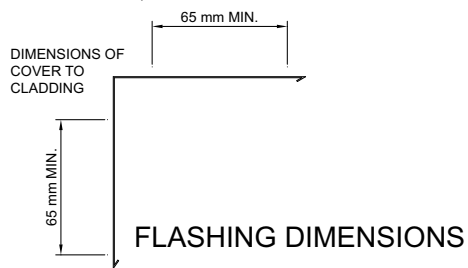
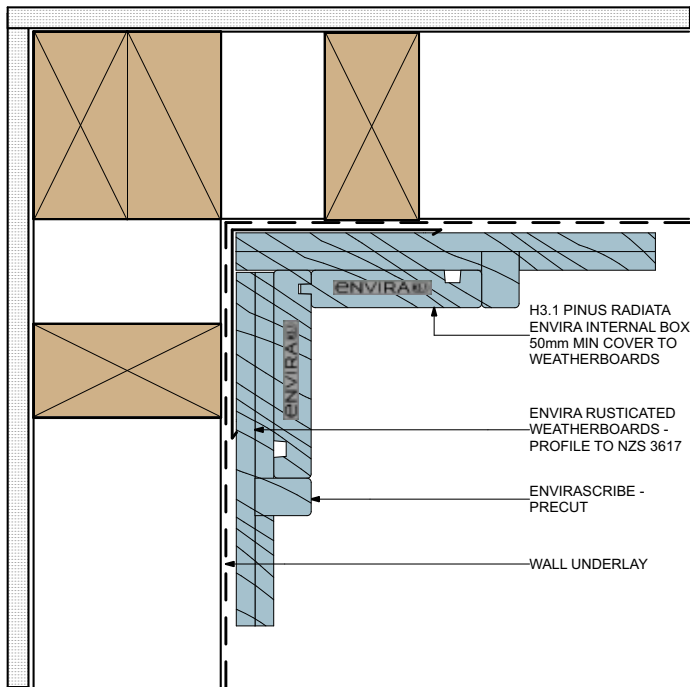
2009 2D :



DATE: 16/04/2024 check for updates and download 2D files in PDF, DWG or DXF format at www.niagara.nz

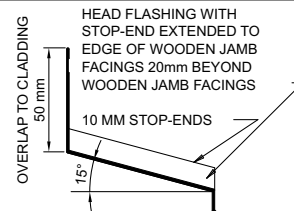
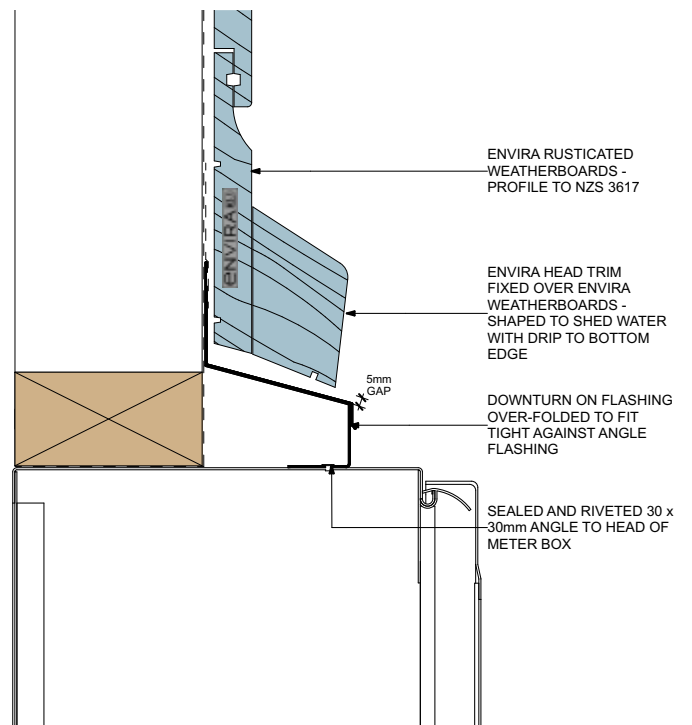
Rusticated Direct Fix Internal Corner

2010 2D :



Rusticated Direct Fix Meter Box Head

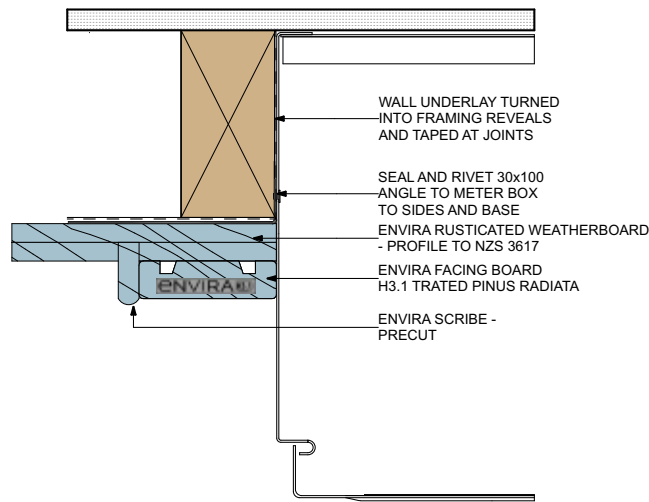
2011 2D :



FLASHING DIMENSIONS

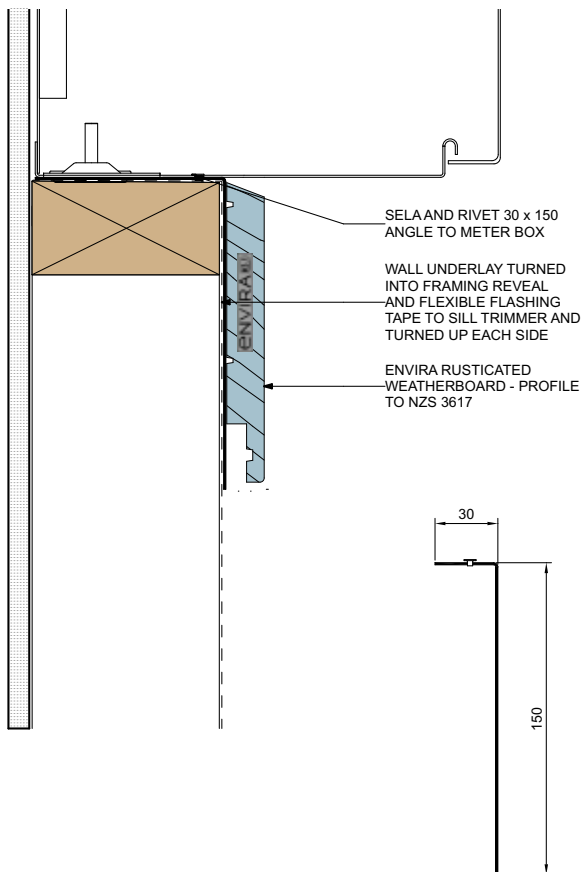
Rusticated Direct Fix Meter Box Jamb

2012 2D :



Rusticated Direct Fix Meter Box Sill

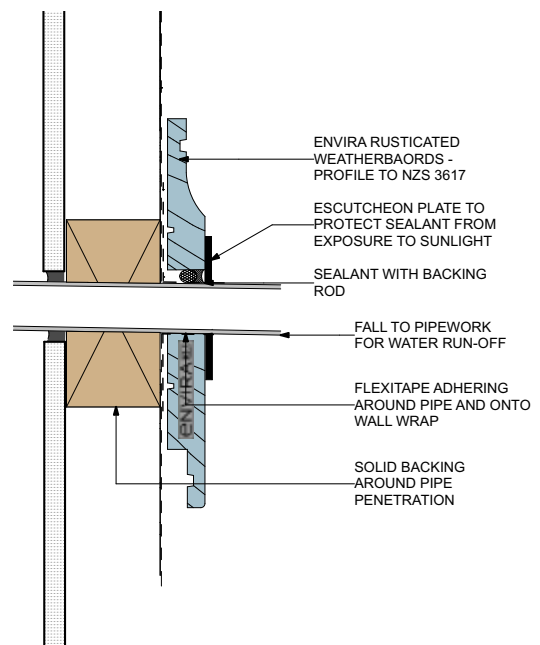
2013 2D :



FLASHING DIMENSIONS

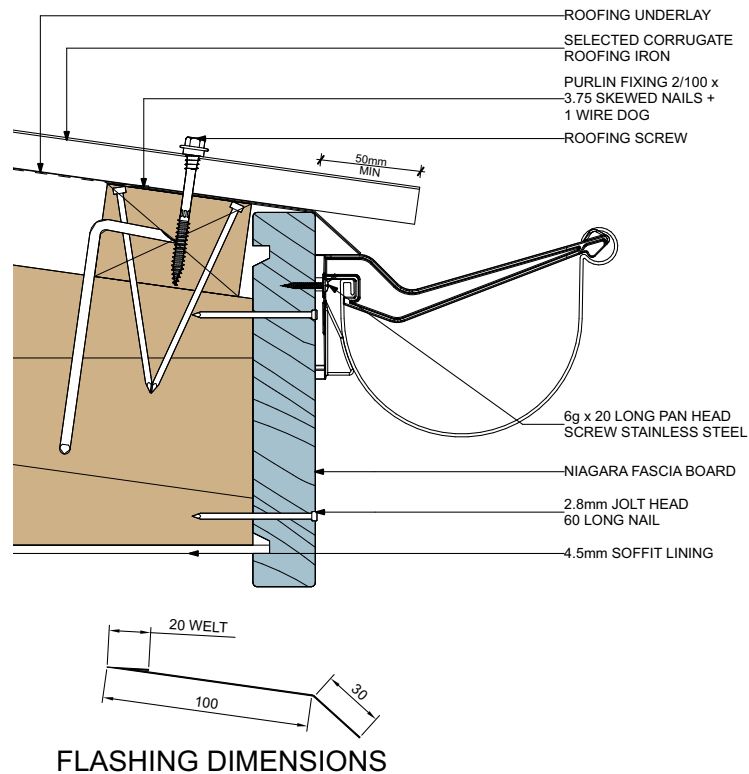
Rusticated Direct Fix Pipe Penetration

2014 2D :



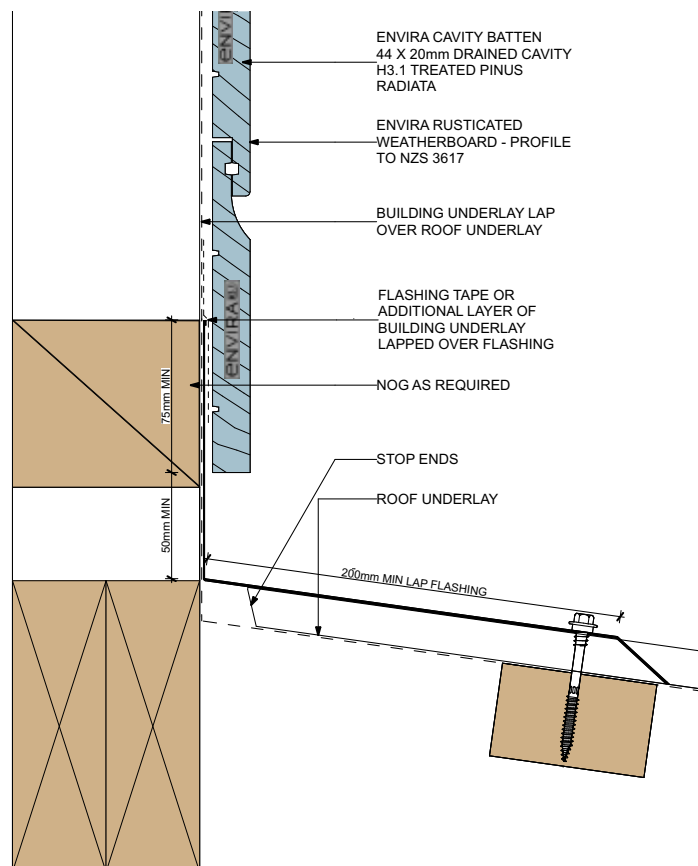
Rusticated Direct Fix Fascia Eaves

2015 2D :



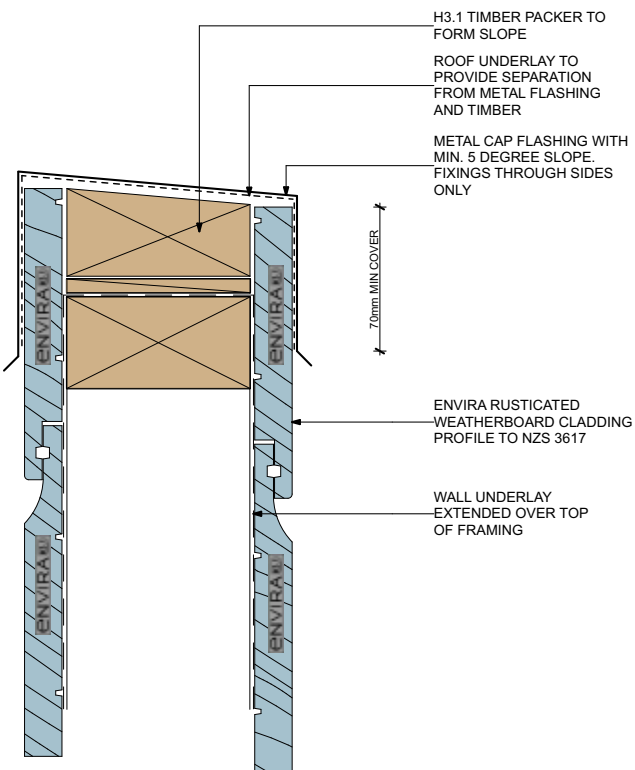
Rusticated Direct Fix Apron

2016 2D :



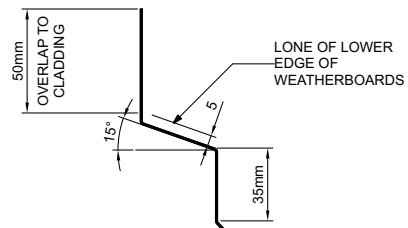
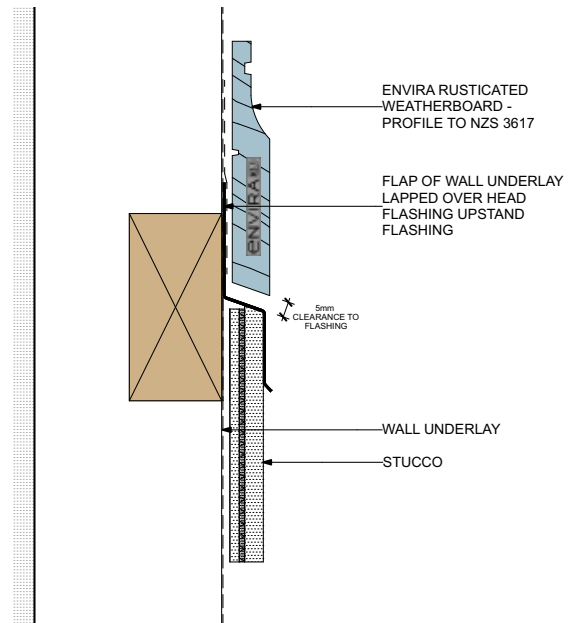
Rusticated Direct Fix Parapet Cap

2018 2D :



Rusticated Direct Fix Stucco - Below

2019 2D :

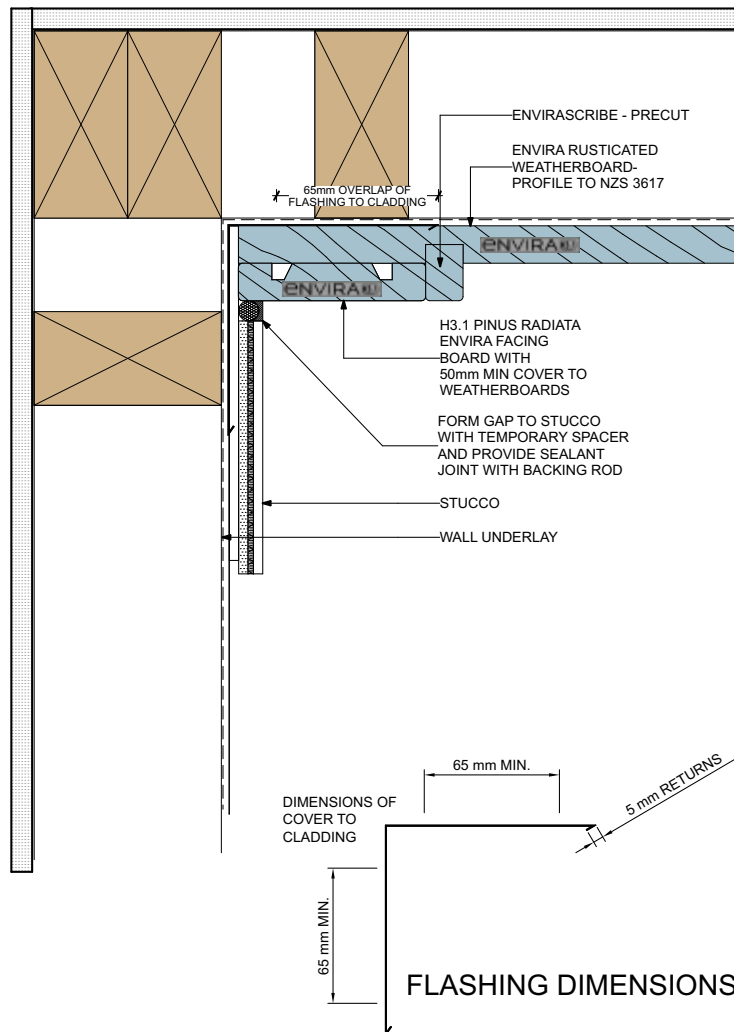


FLASHING DIMENSIONS

DATE: 16/04/2024 check for updates and download 2D files in PDF, DWG or DXF format at www.niagara.nz

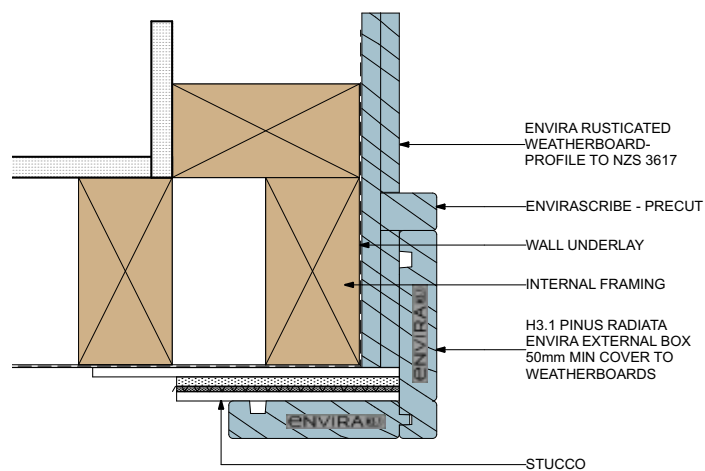
Rusticated Direct Fix Stucco - Internal Corner

2020 2D :



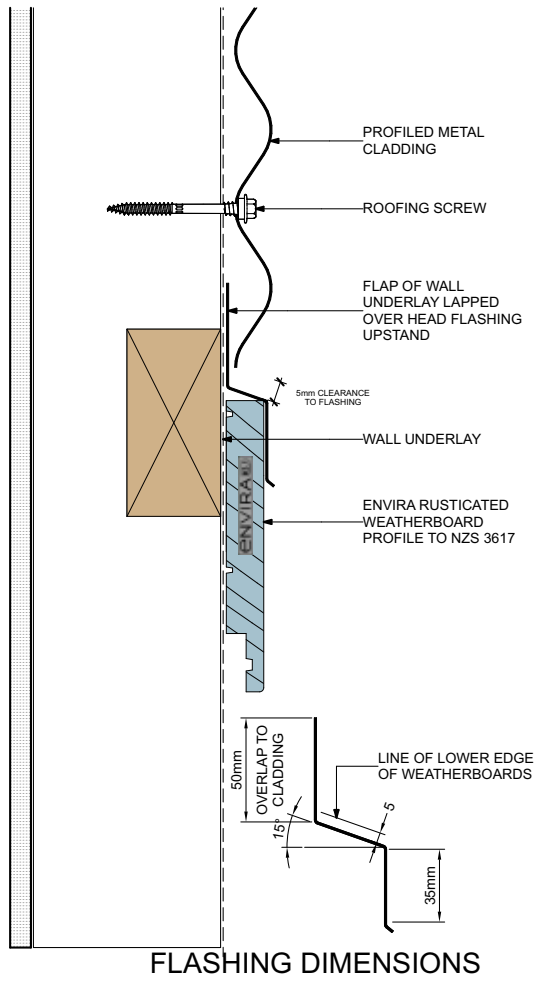
Rusticated Direct Fix Stucco - External Corner

2021 2D :



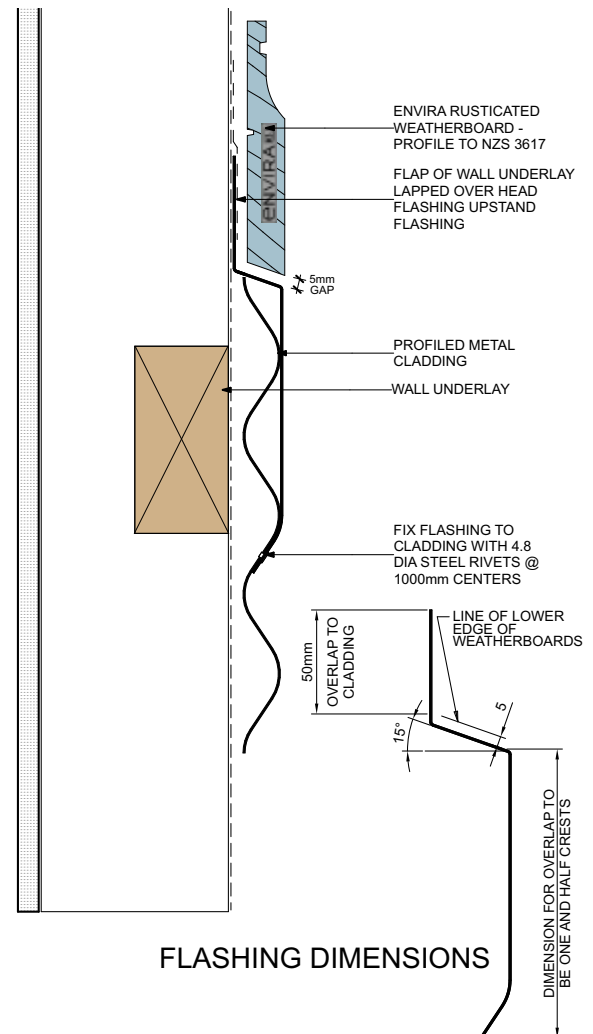
Rusticated Direct Fix **Profiled Metal - Above**

2022 2D :



Rusticated Direct Fix **Profiled Metal - Below**

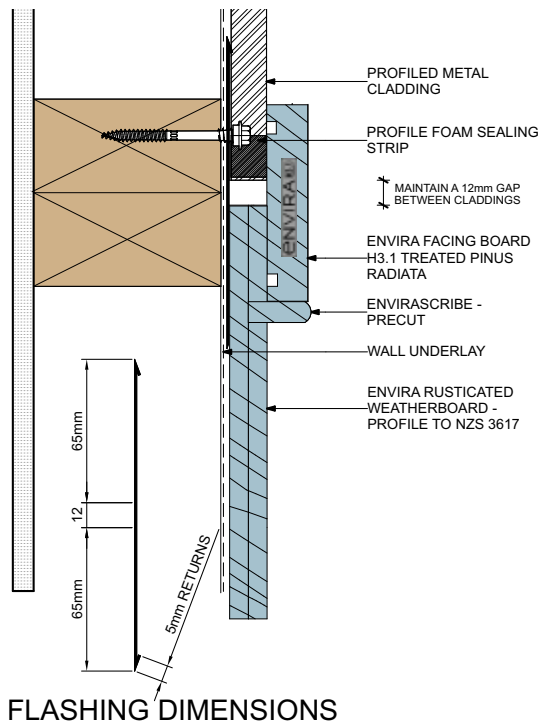
2023 2D :



DATE: 16/04/2024 check for updates and download 2D files in PDF, DWG or DXF format at www.niagara.nz

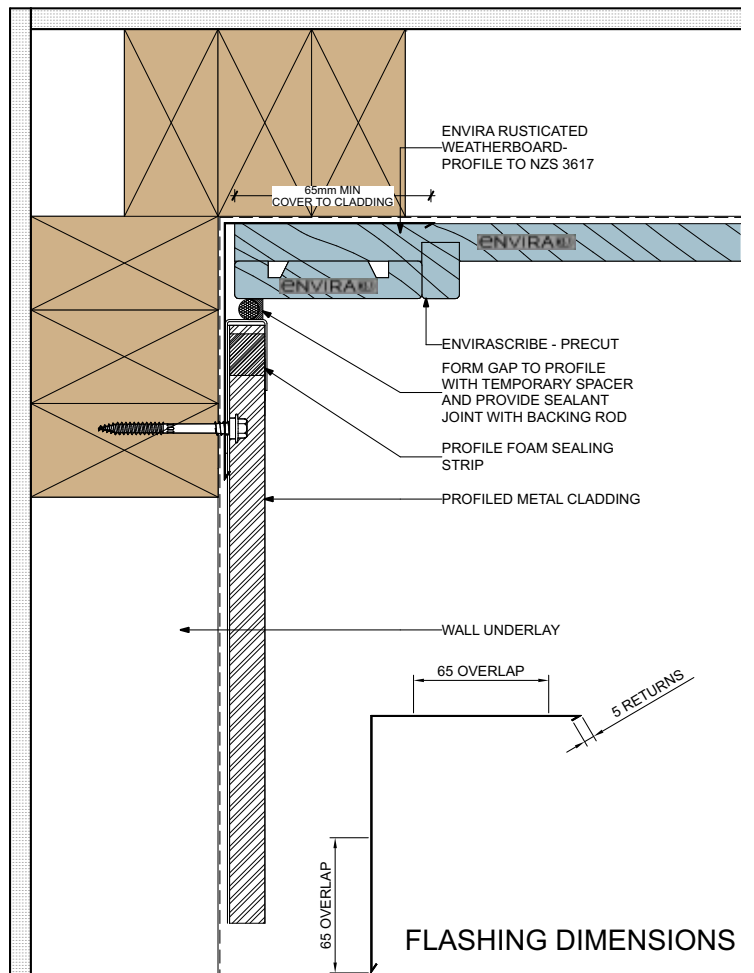
Rusticated Direct Fix **Profiled Metal - Abutting**

2024 2D :



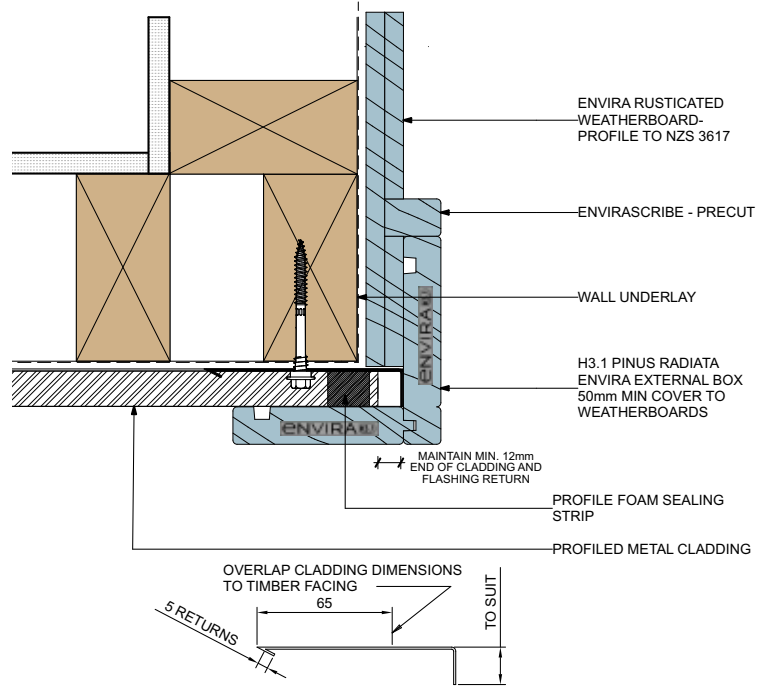
Rusticated Direct Fix **Profiled Metal - Internal Corner**

2025 2D :



Rusticated Direct Fix **Profiled Metal - External Corner**

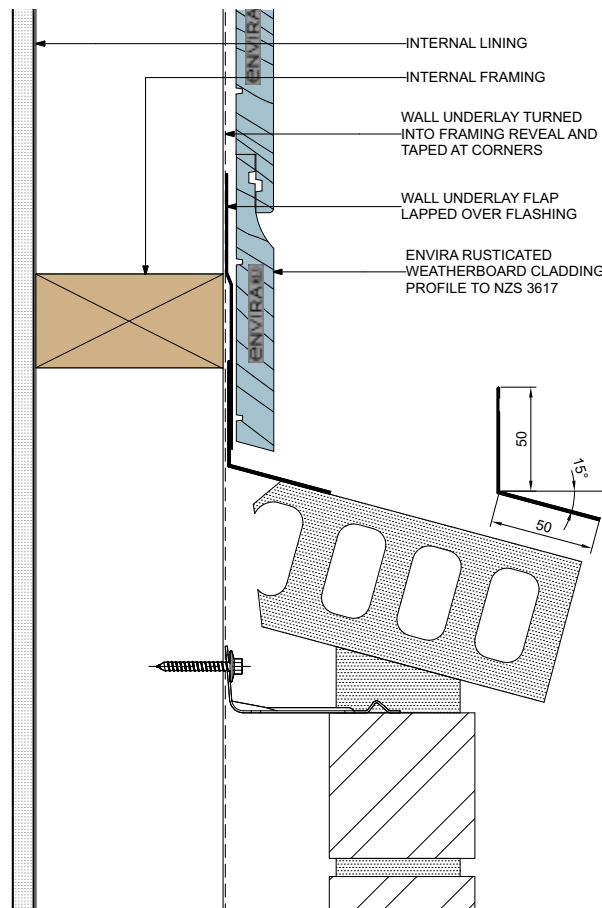
2026 2D :



FLASHING DIMENSIONS

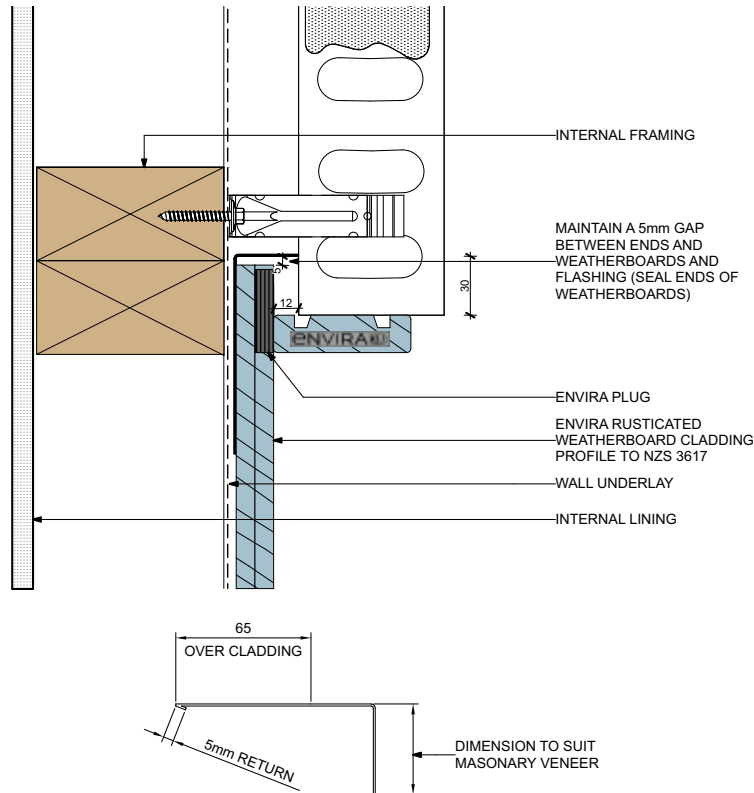
Rusticated Direct Fix **Masonry Veneer - Below**

2027 2D :



Rusticated Direct Fix Masonry Veneer - Abutting

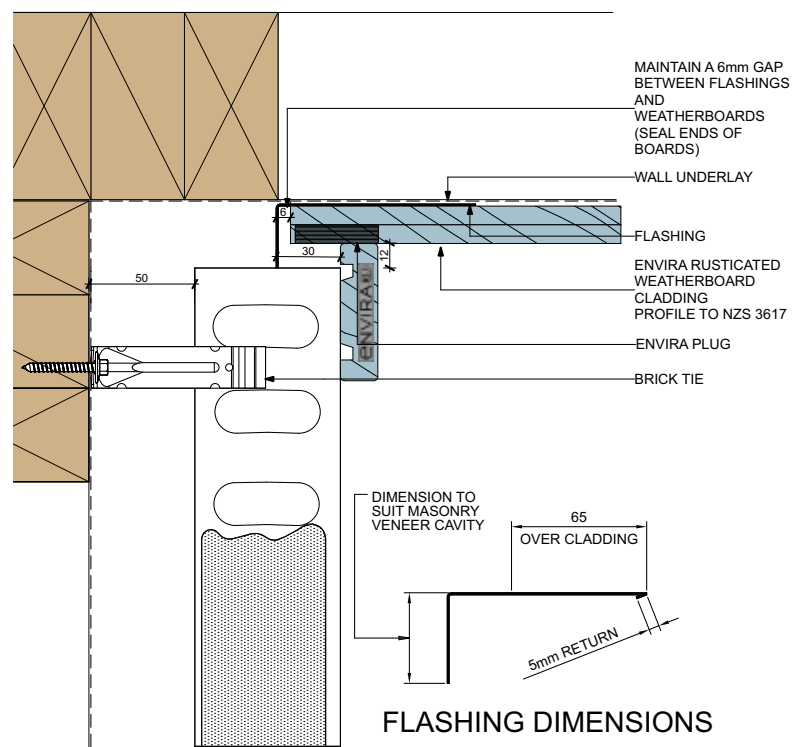
2028 2D :



FLASHING DIMENSIONS

Rusticated Direct Fix Masonry Veneer - Internal Corner

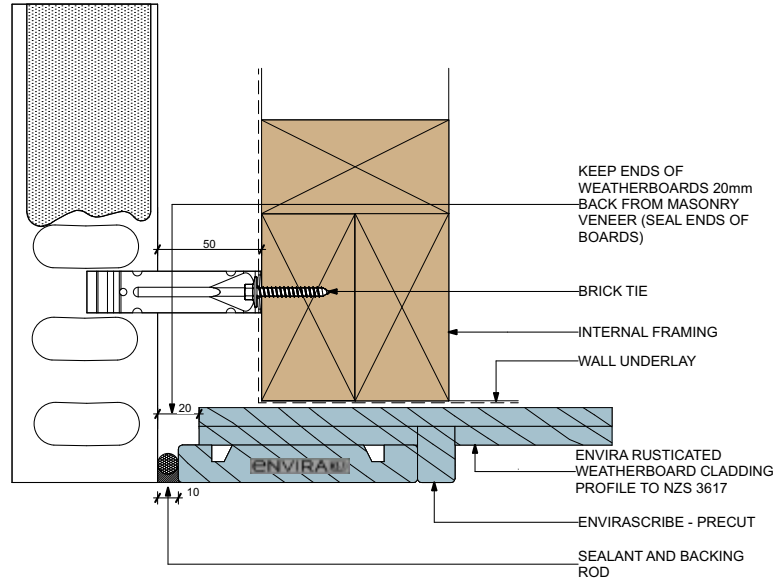
2029 2D :



FLASHING DIMENSIONS

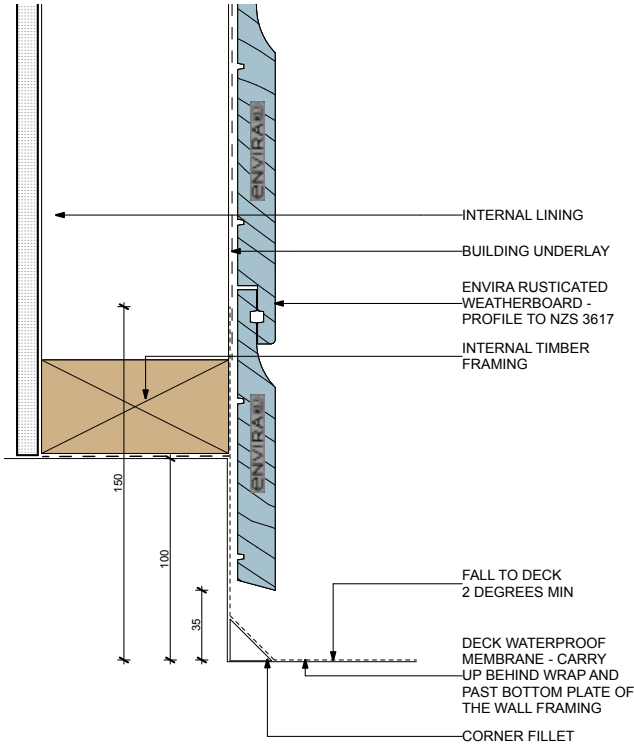
Rusticated Direct Fix Masonry Veneer - External Corner

2030 2D :



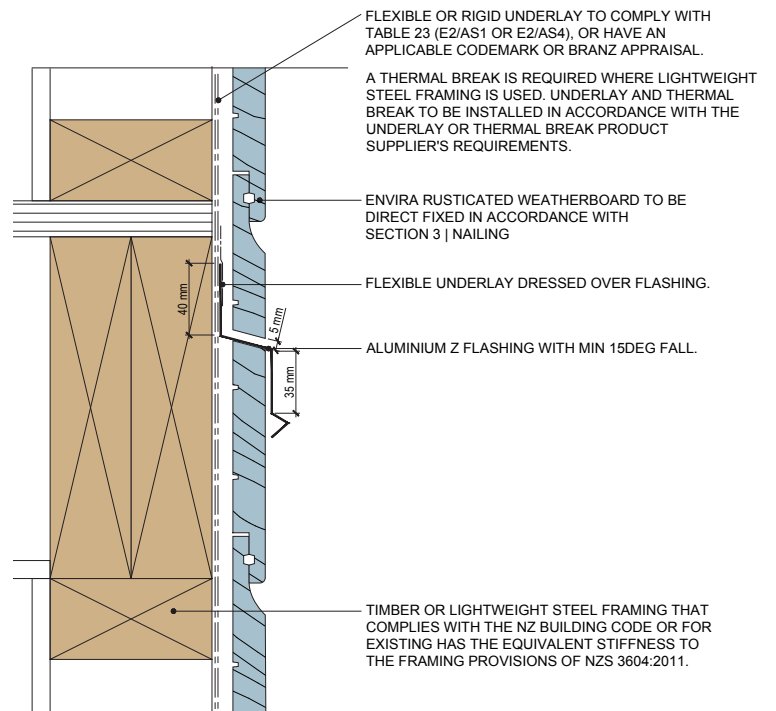
Rusticated Direct Fix Water Proof Deck - Above

2031 2D :



Rusticated Direct Fix Mid-Floor Junction

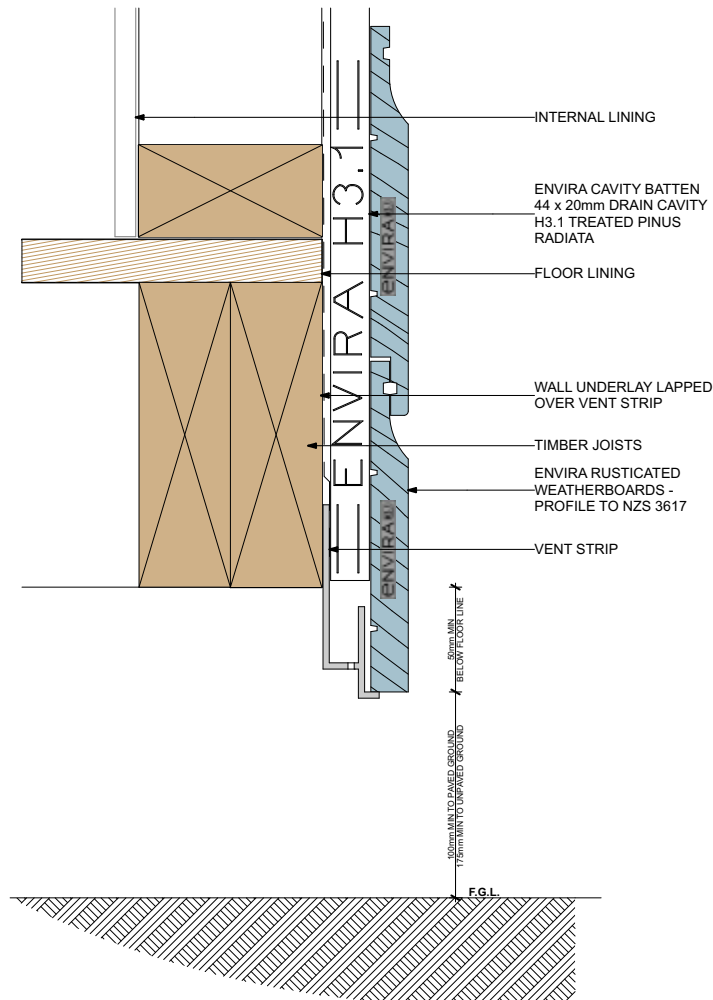
2032 2D :



RUSTICATED CAVITY FIX

Rusticated Cavity Fix **Foundation Timber**

4001 2D :



Please check for updates on Niagara's website - www.niagara.nz

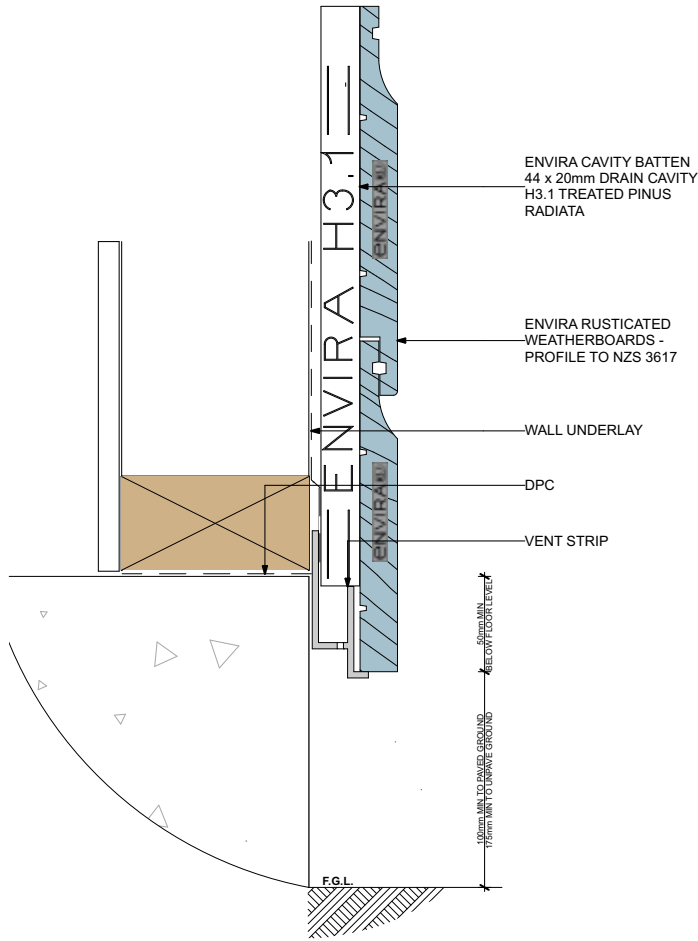
Download 2D drawing files in PDF, DWG or DXF format online.

Bevel Back, Rusticated and Shiplap technical manuals are available for download at www.niagara.nz/brochures

DATE: 16/04/2024 check for updates and download 2D files in PDF, DWG or DXF format at www.niagara.nz

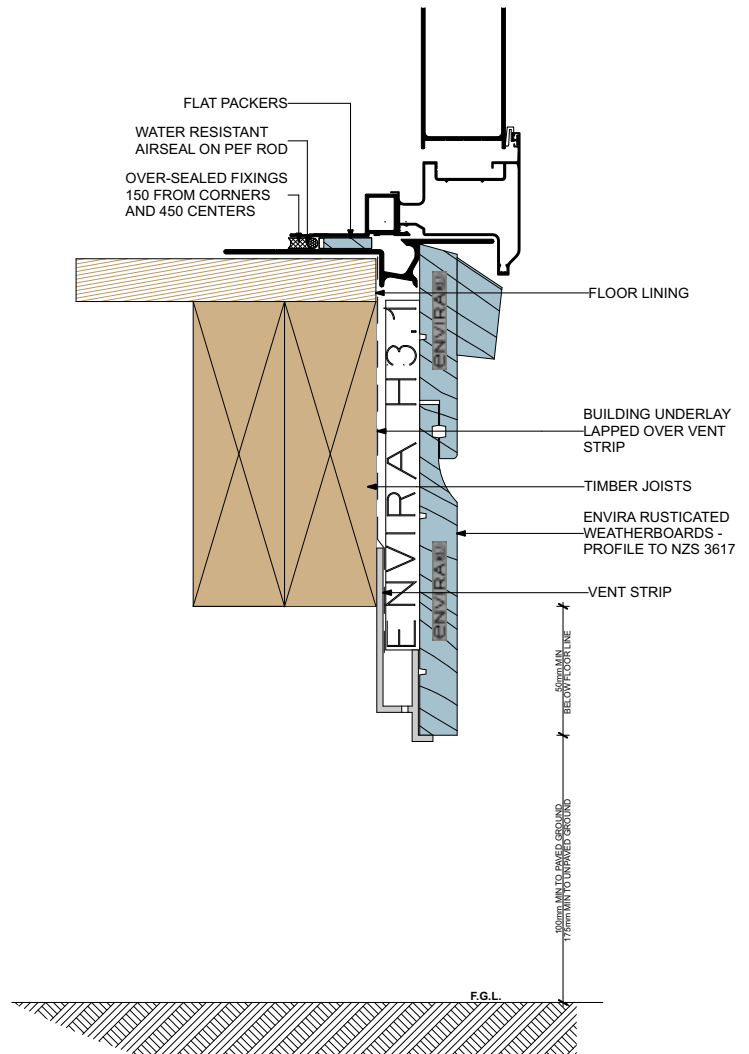
Rusticated Cavity Fix Foundation Concrete

4002 2D :



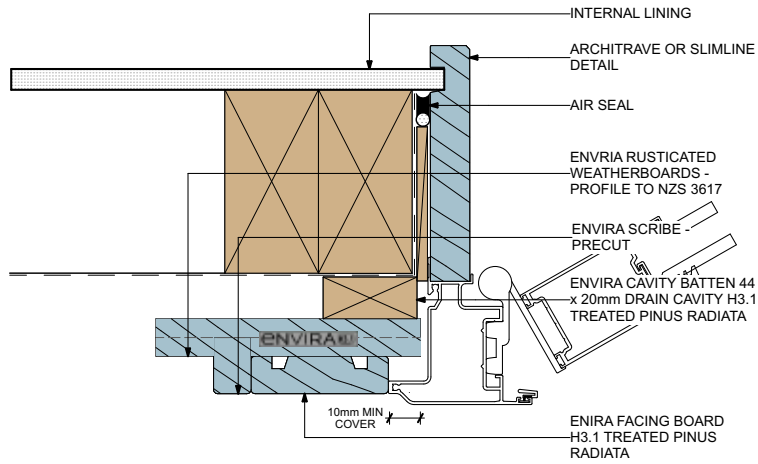
Rusticated Cavity Fix Door Sill

4017 2D :



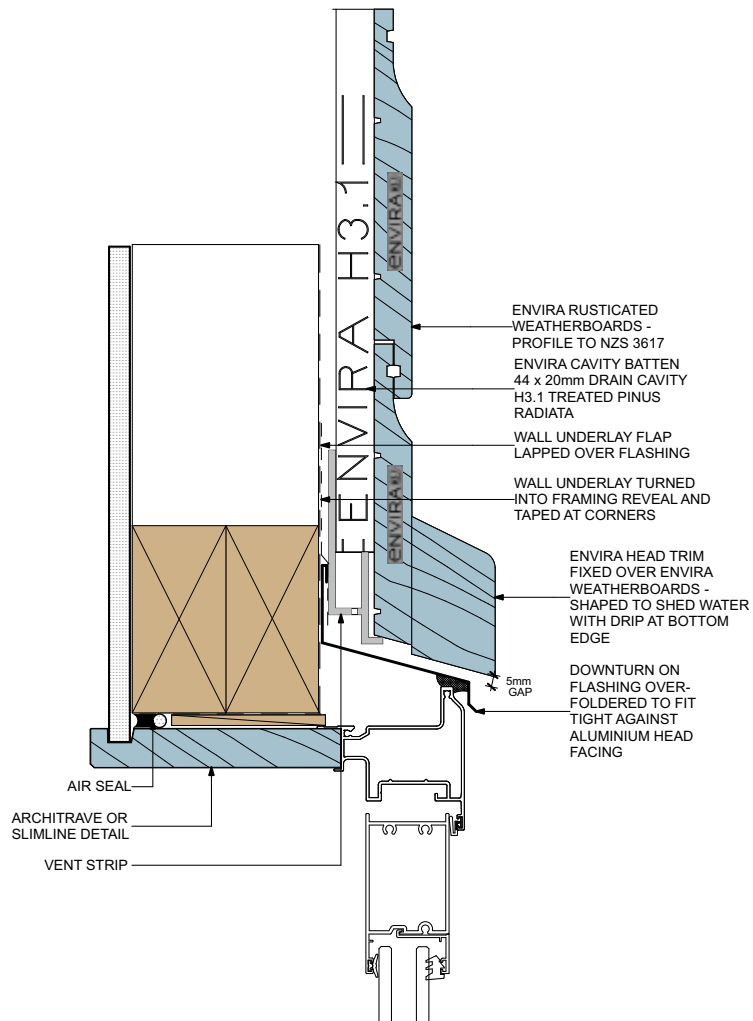
Rusticated Cavity Fix Door Jamb

4003 2D :



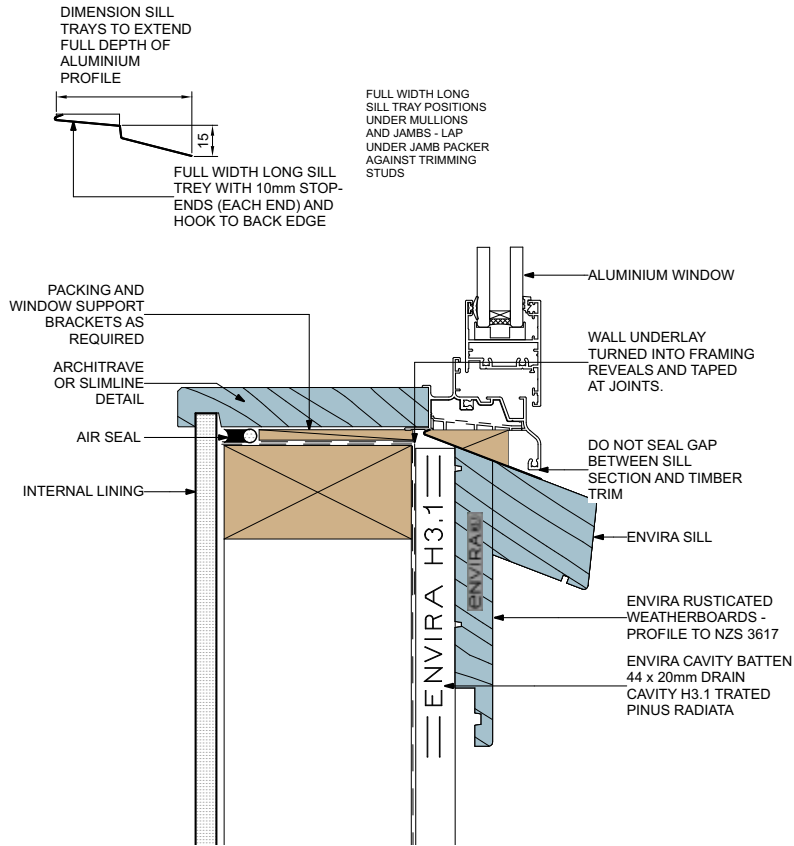
Rusticated Cavity Fix Door Head

4004 2D :



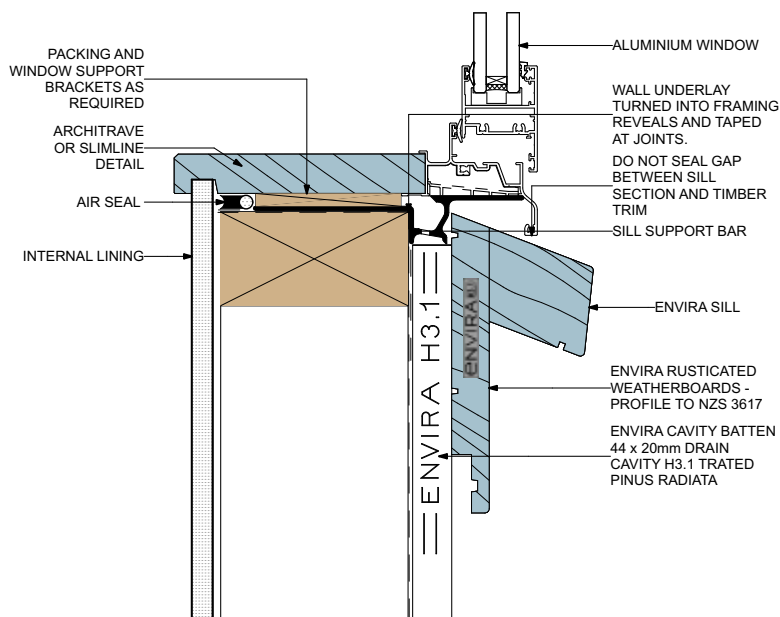
Rusticated Cavity Fix Window Sill

4005 2D :



Rusticated Cavity Fix Window Sill (Sill Support Bar)

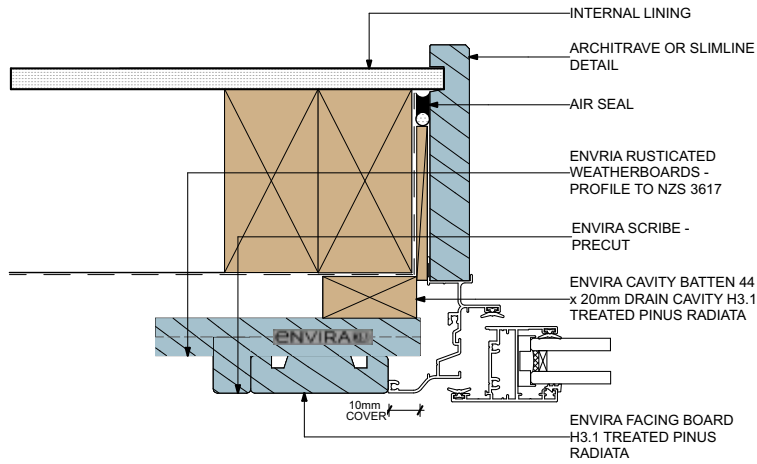
4005 A 2D :



DATE: 16/04/2024 check for updates and download
2D files in PDF, DWG or DXF format at www.niagara.nz

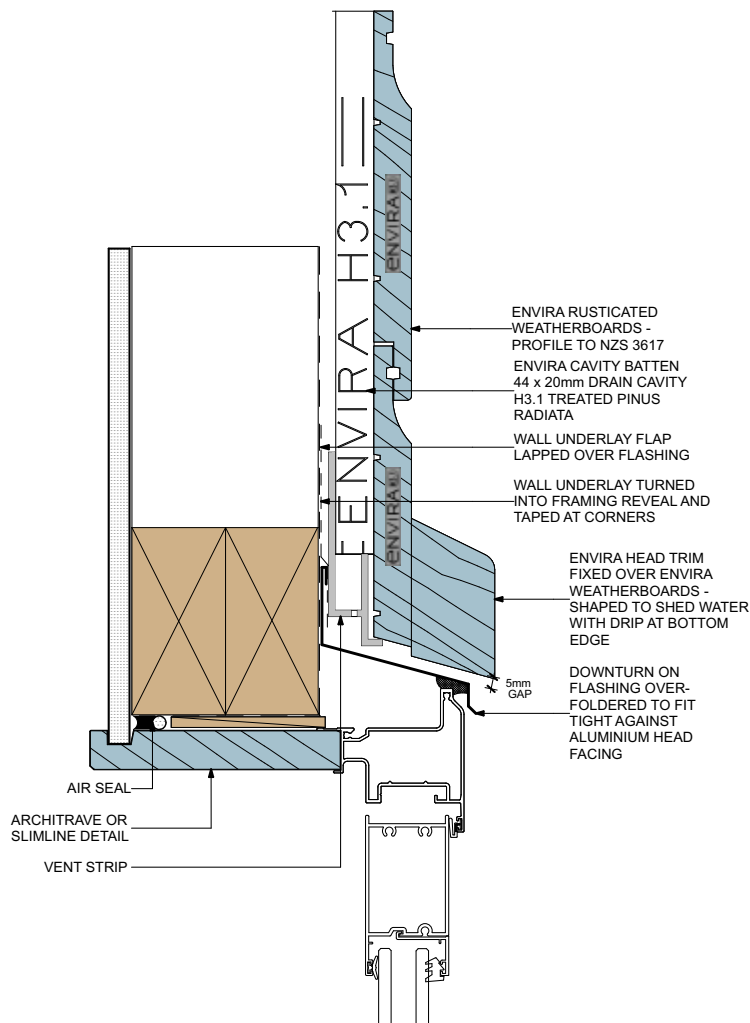
Rusticated Cavity Fix Window Jamb

4006 2D :



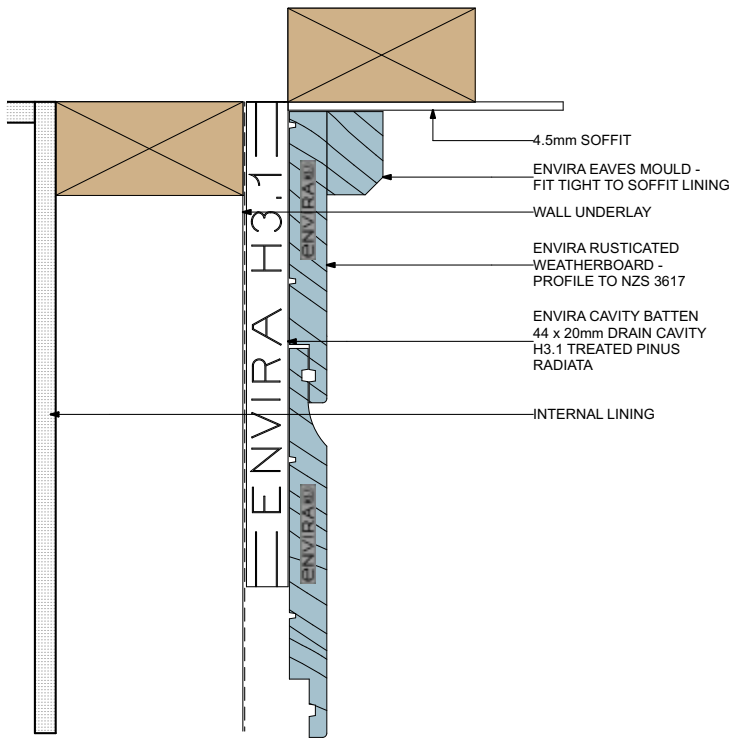
Rusticated Cavity Fix Window Head

4007 2D :



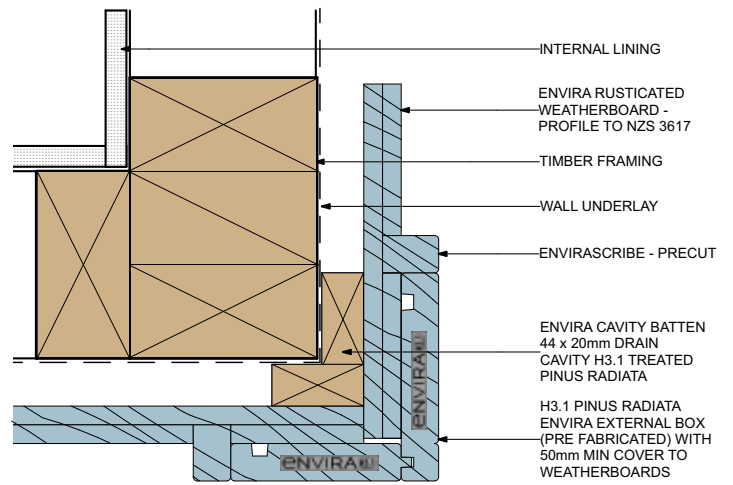
Rusticated Cavity Fix Soffit

4008 2D :



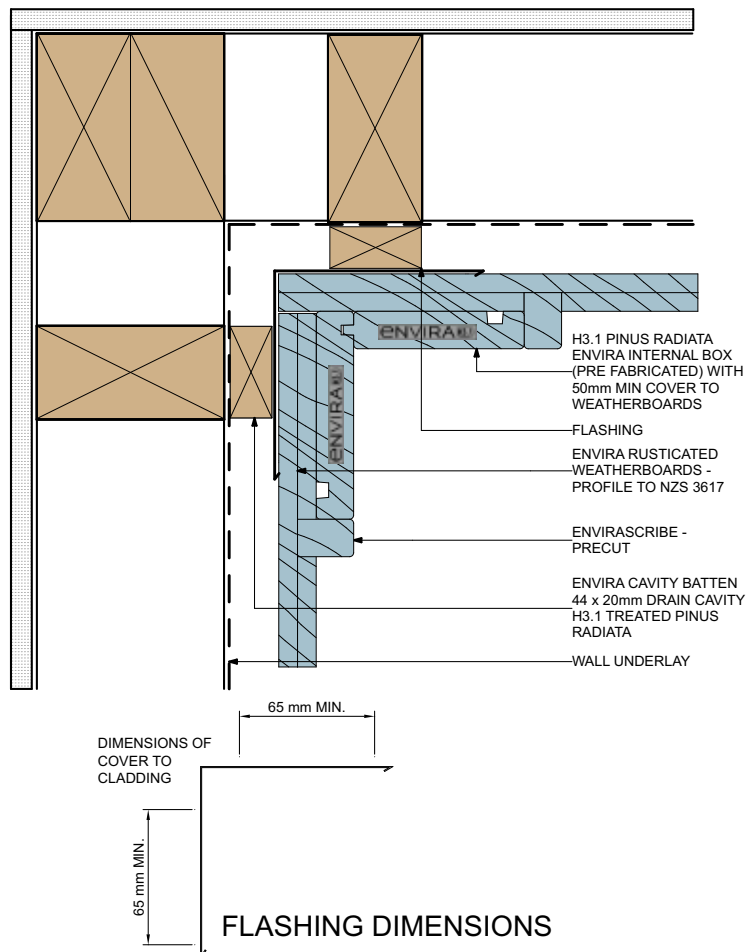
Rusticated Cavity Fix External corner

4009 2D :



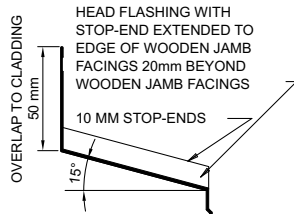
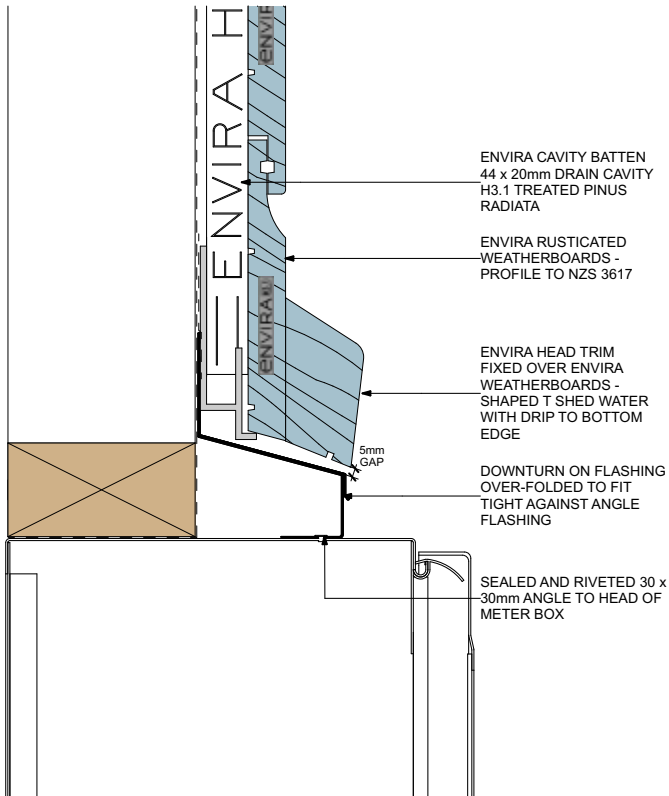
Rusticated Cavity Fix Internal Corner

4010 2D :



Rusticated Cavity Fix Meter Box Head

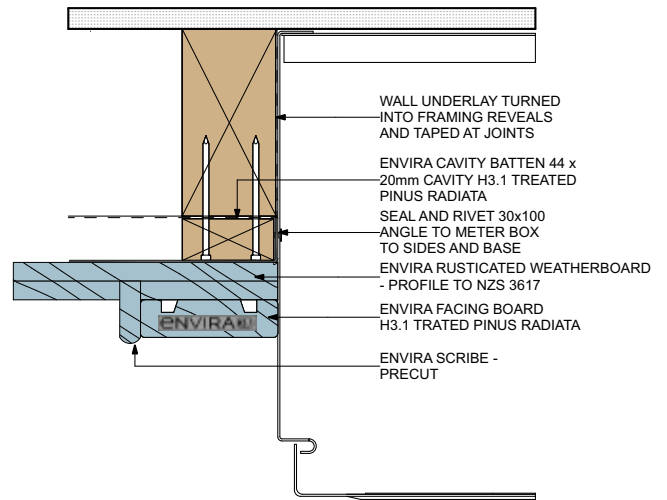
4011 2D :



FLASHING DIMENSIONS

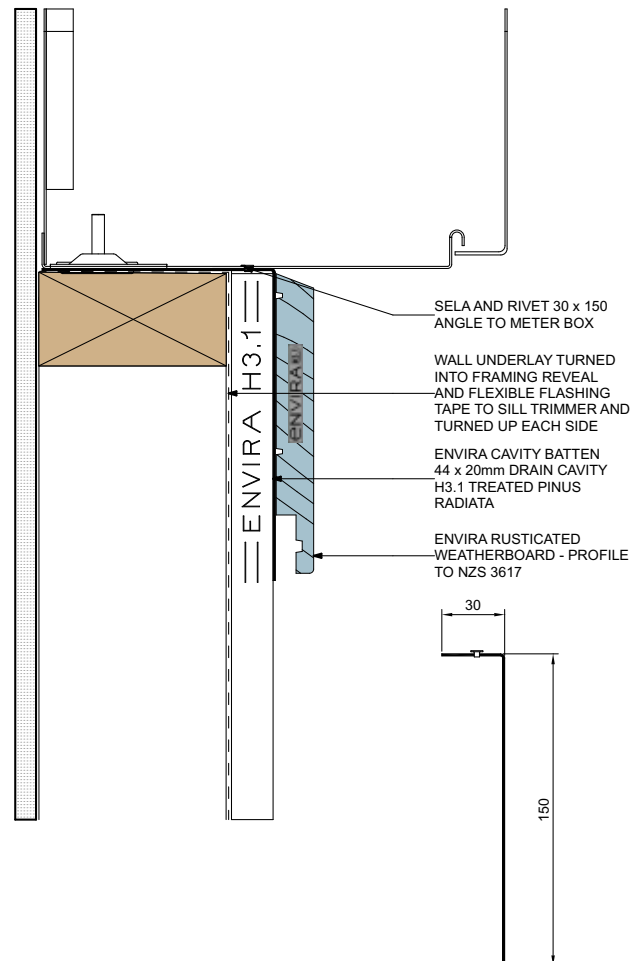
Rusticated Cavity Fix Meter Box Jamb

4012 2D :



Rusticated Cavity Fix Meter Box Sill

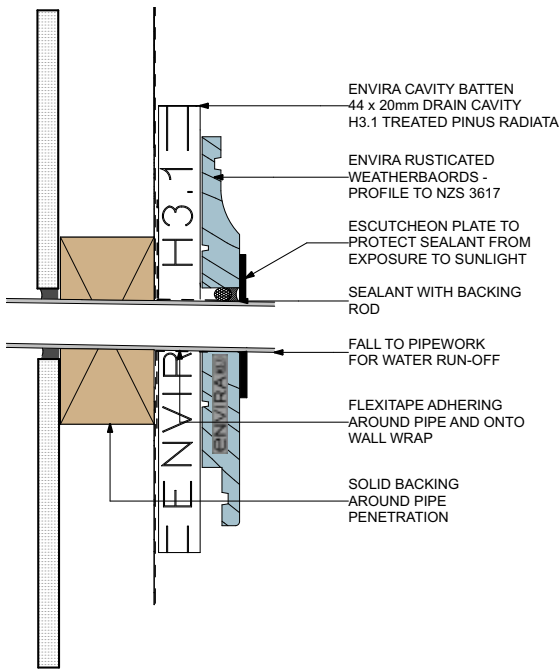
4013 2D :



FLASHING DIMENSIONS

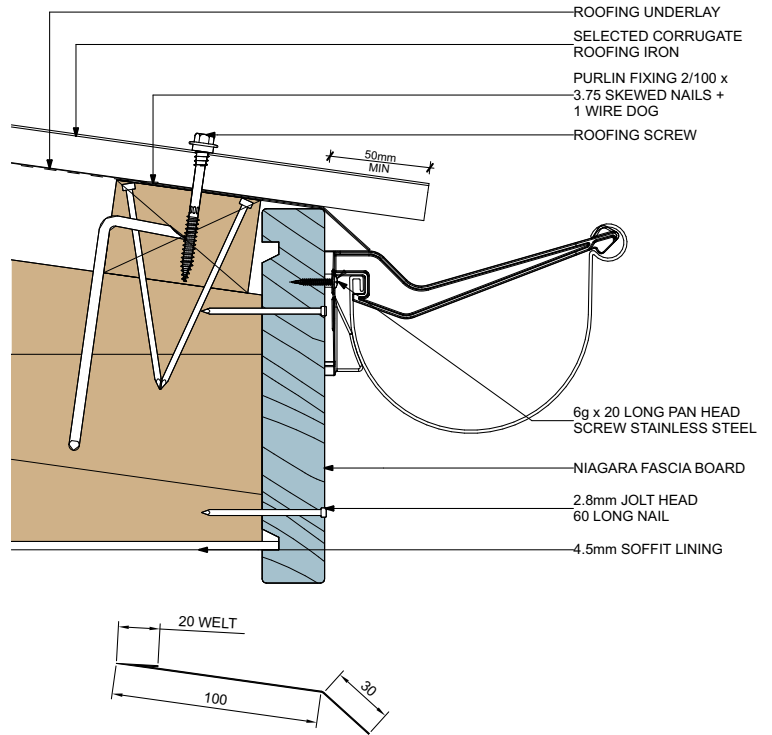
Rusticated Cavity Fix Pipe Penetration

4014 2D :



Rusticated Cavity Fix Fascia Eaves

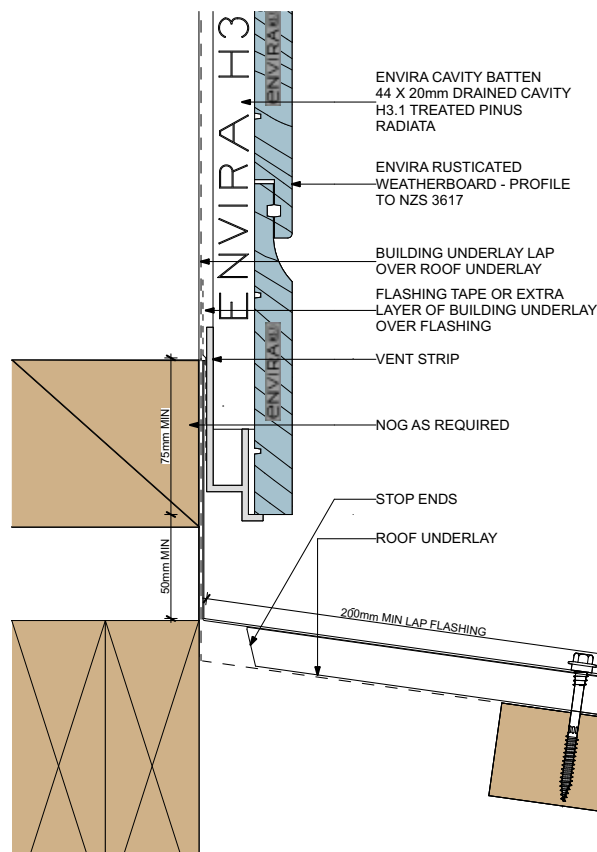
4015 2D :



FLASHING DIMENSIONS

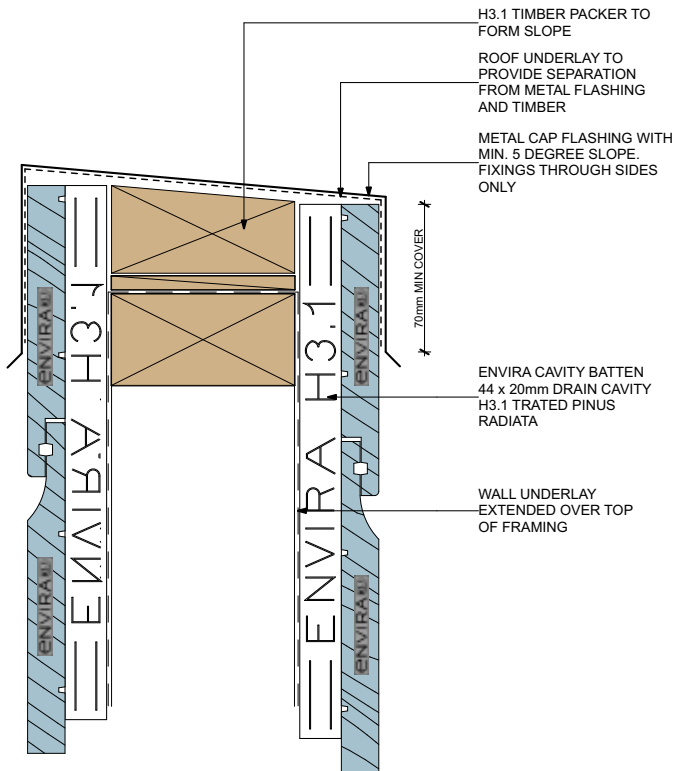
Rusticated Cavity Fix Apron

4016 2D :



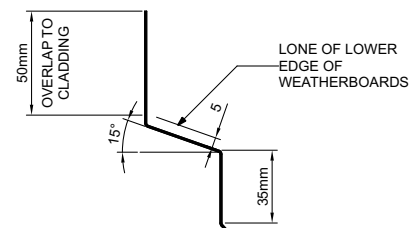
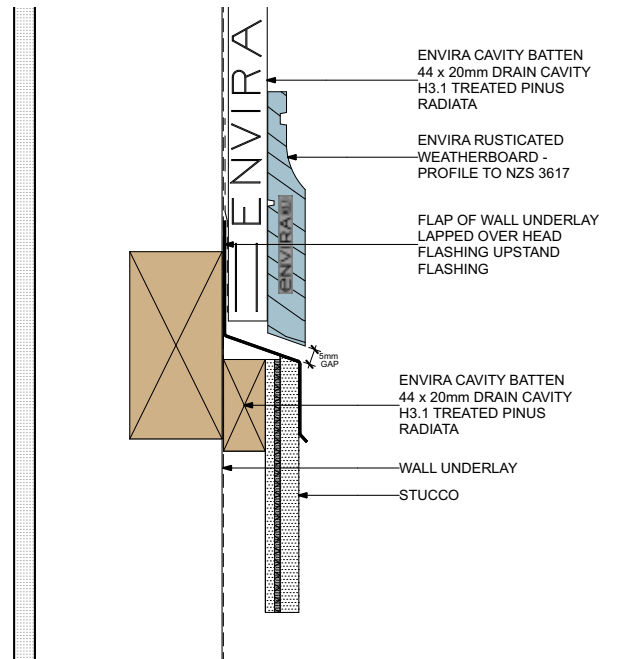
Rusticated Cavity Fix Parapet Cap

4018 2D :



Rusticated Cavity Fix Stucco - Below

4019 2D :

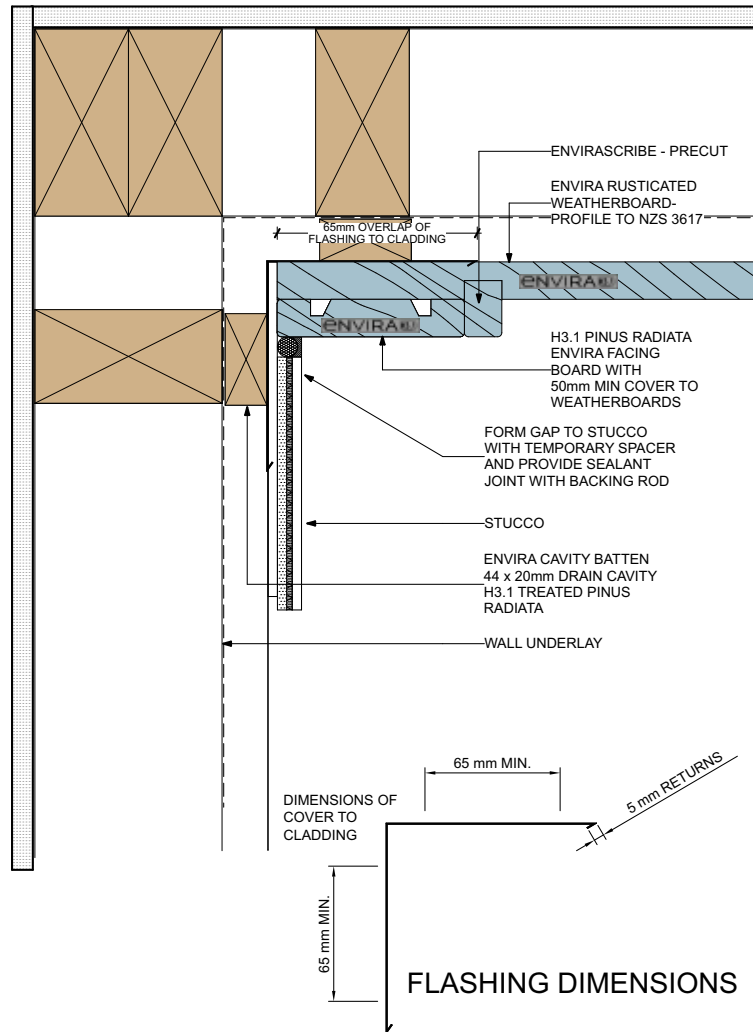


FLASHING DIMENSIONS

DATE: 16/04/2024 check for updates and download 2D files in PDF, DWG or DXF format at www.niagara.nz

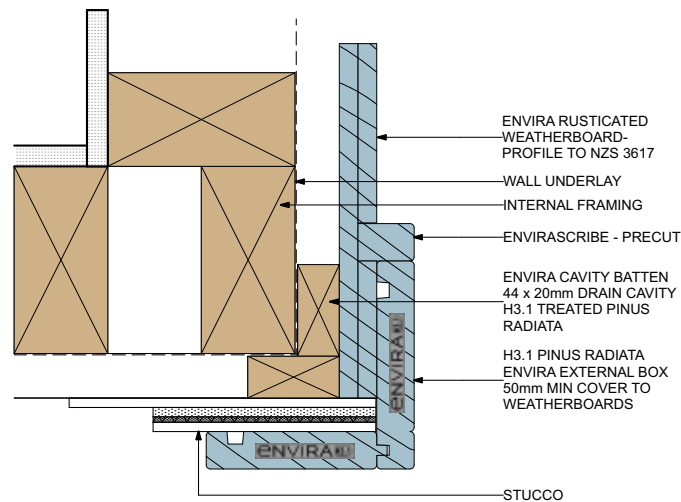
Rusticated Cavity Fix Stucco - Internal Corner

4020 2D :



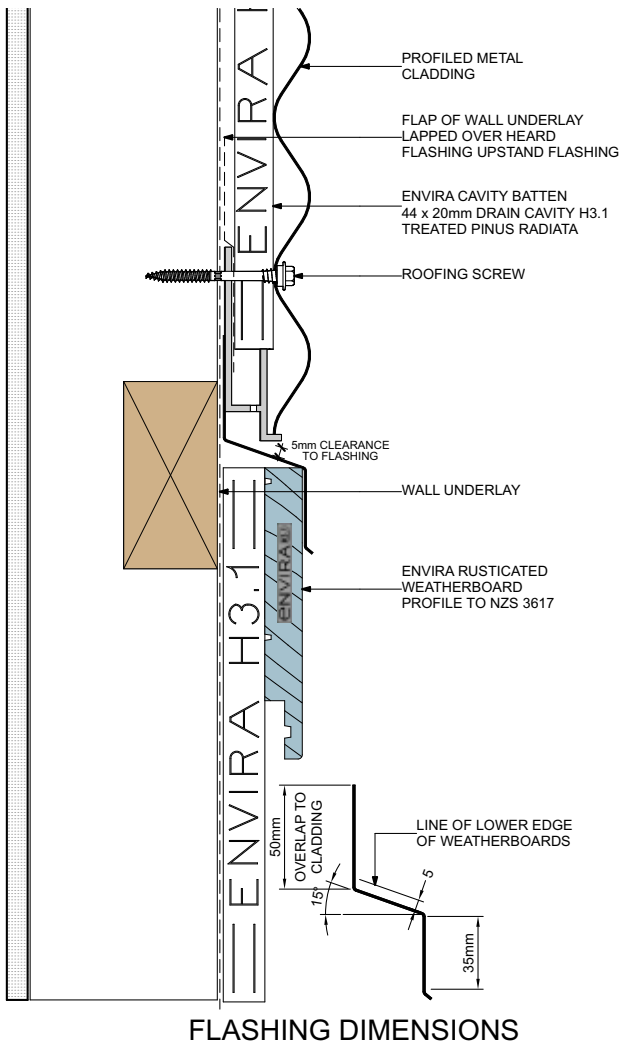
Rusticated Cavity Fix Stucco - External Corner

4021 2D :



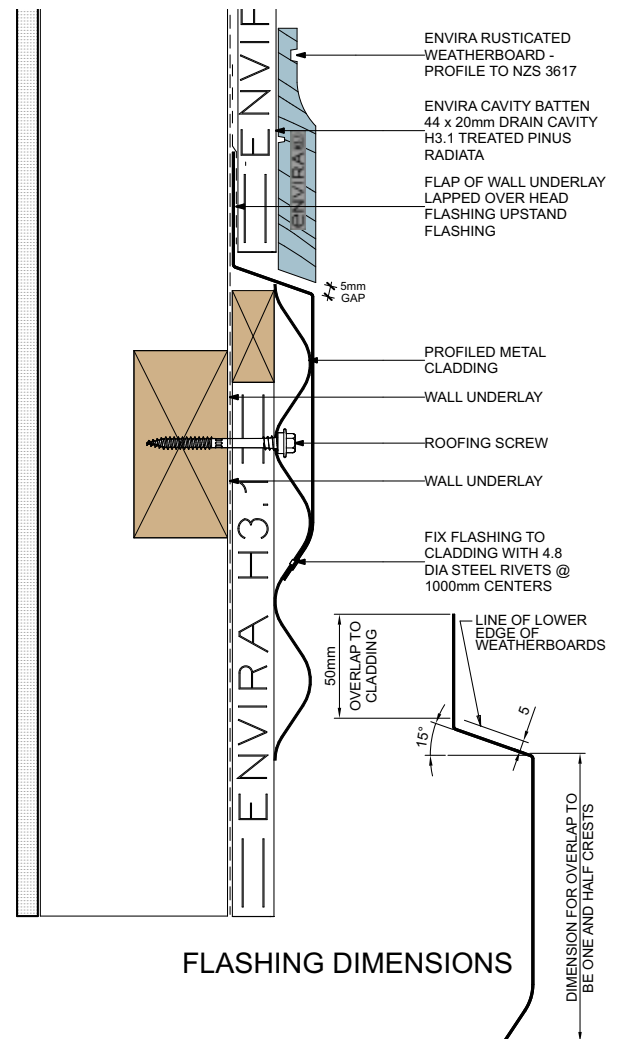
Rusticated Cavity Fix **Profiled Metal - Above**

4022 2D :



Rusticated Cavity Fix **Profiled Metal - Below**

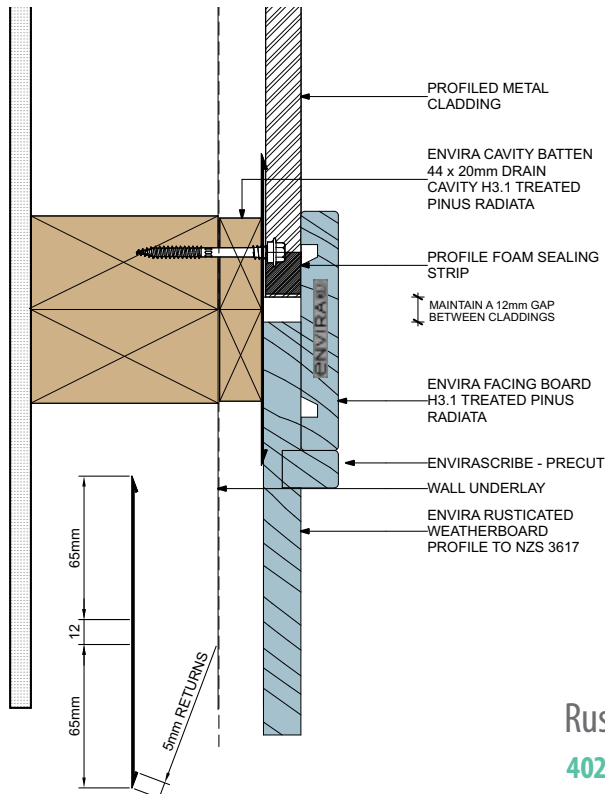
4023 2D :



DATE: 16/04/2024 check for updates and download 2D files in PDF, DWG or DXF format at www.niagara.nz

Rusticated Cavity Fix **Profiled Metal - Abutting**

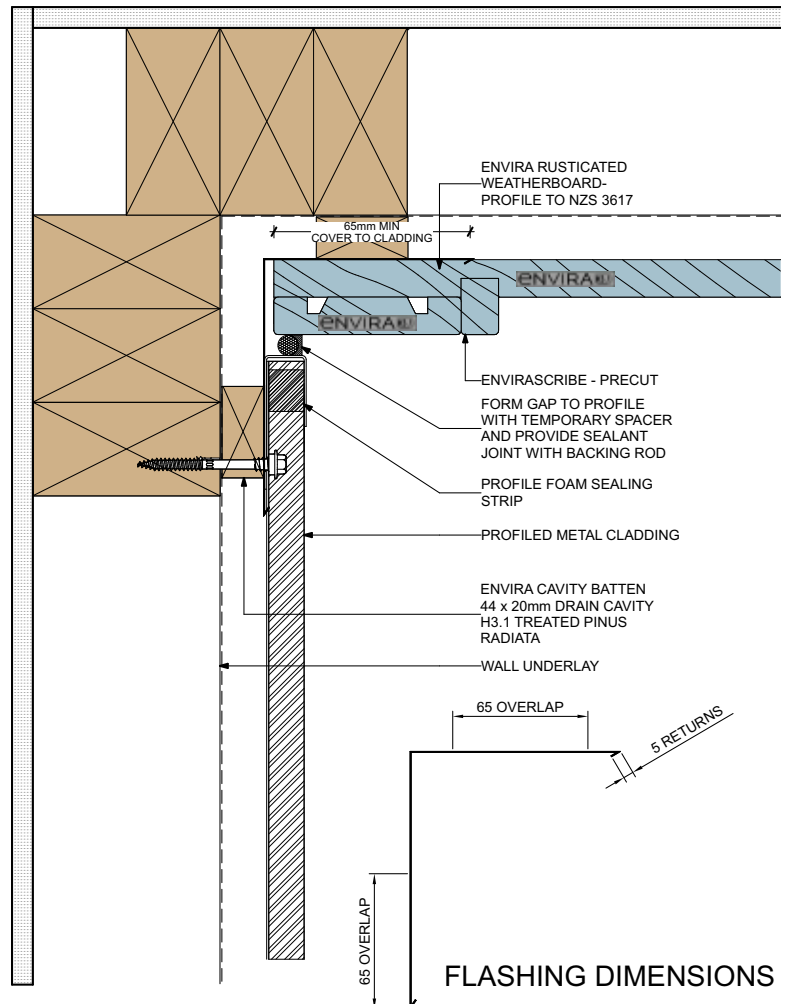
4024 2D :



FLASHING DIMENSIONS

Rusticated Cavity Fix **Profiled Metal - Internal Corner**

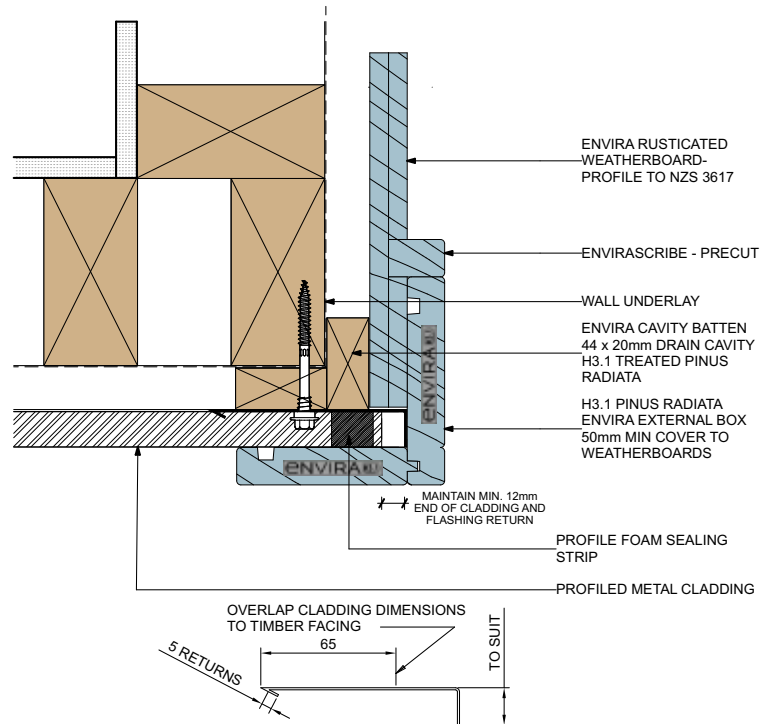
4025 2D :



FLASHING DIMENSIONS

Rusticated Cavity Fix **Profiled Metal - External Corner**

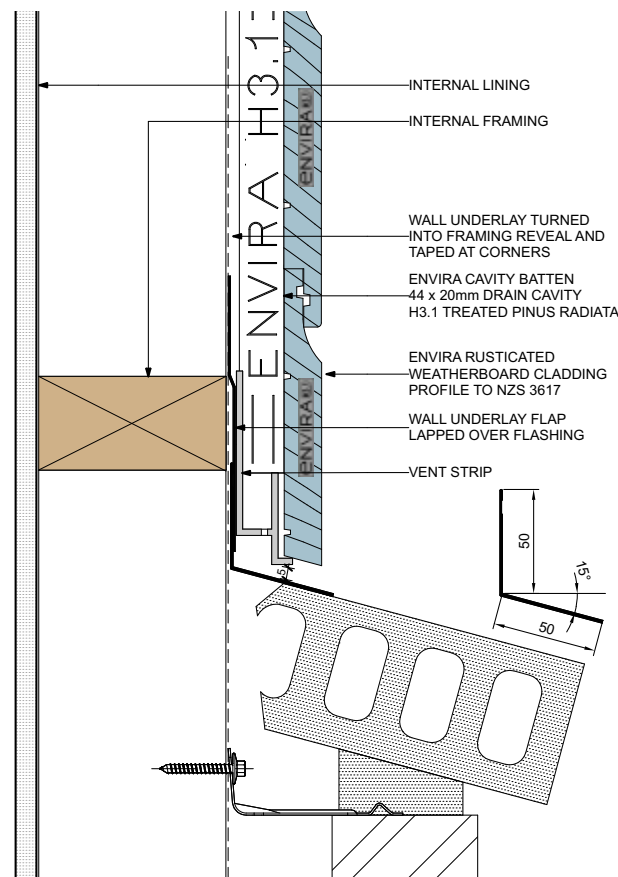
4026 2D :



FLASHING DIMENSIONS

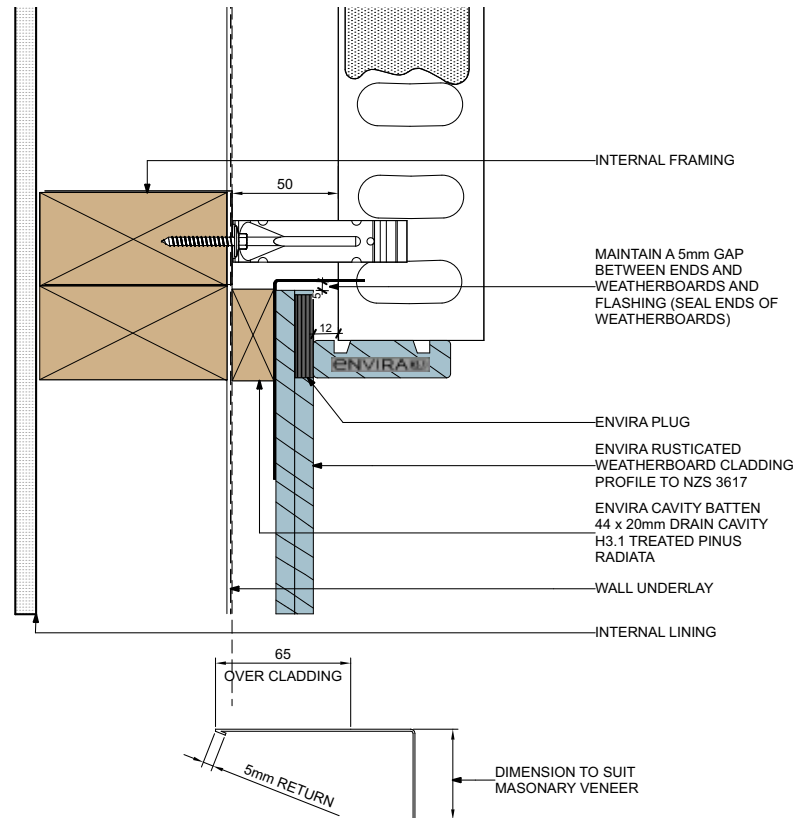
Rusticated Cavity Fix **Masonry Veneer - Below**

4027 2D :



Rusticated Cavity Fix Masonry Veneer - Abutting

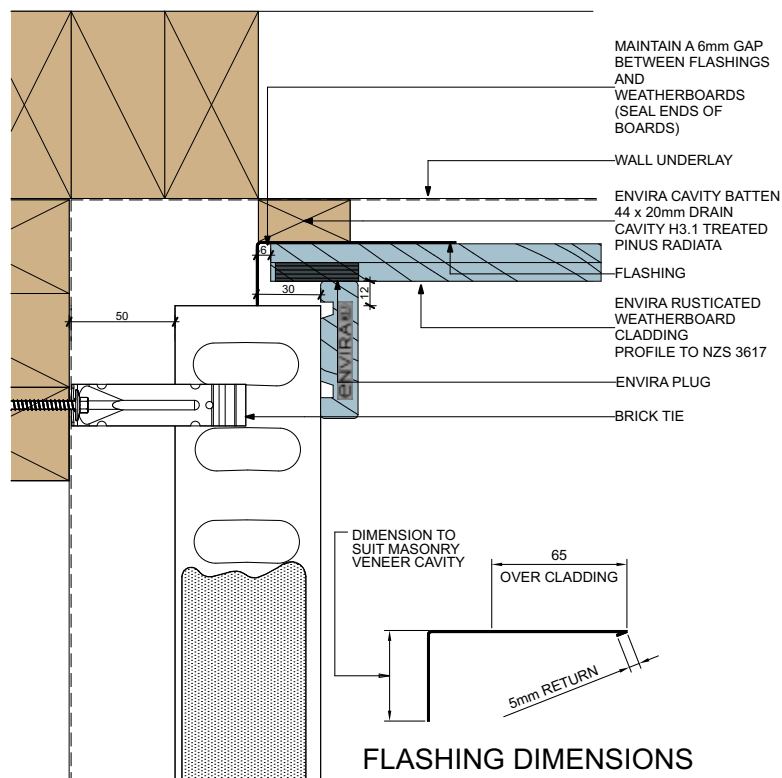
4028 2D :



FLASHING DIMENSIONS

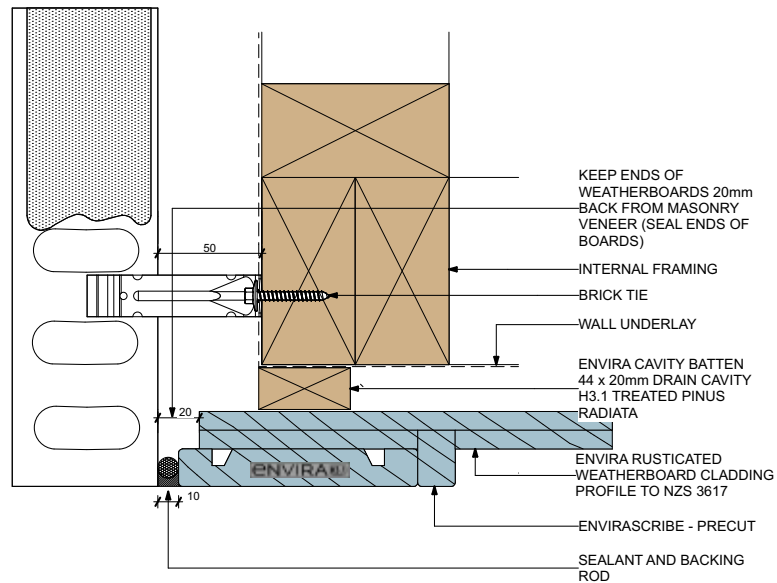
Rusticated Cavity Fix Masonry Veneer - Internal Corner

4029 2D :



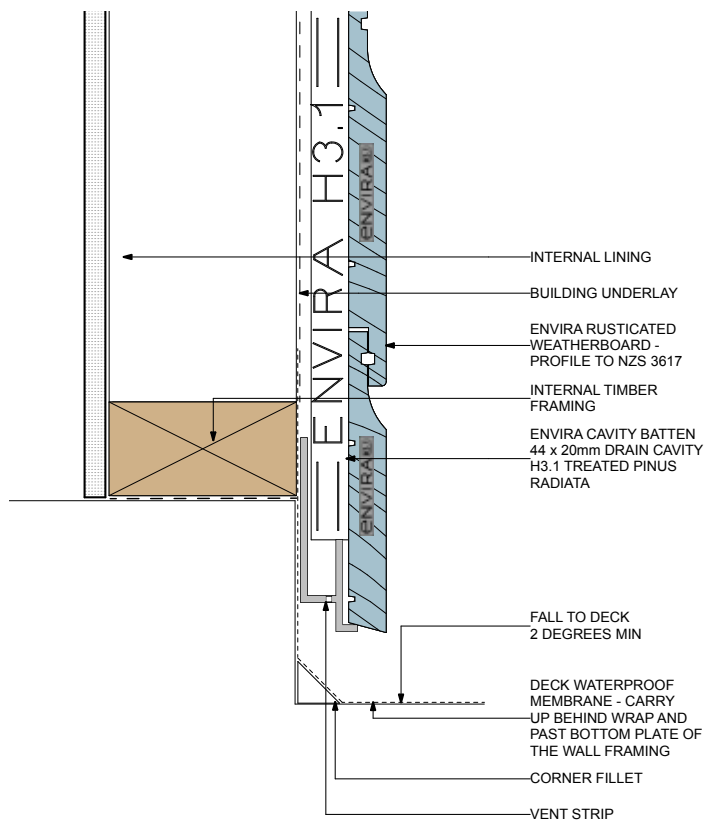
Rusticated Cavity Fix Masonry Veneer - External Corner

4030 2D :



Rusticated Cavity Fix Waterproof Deck - Above

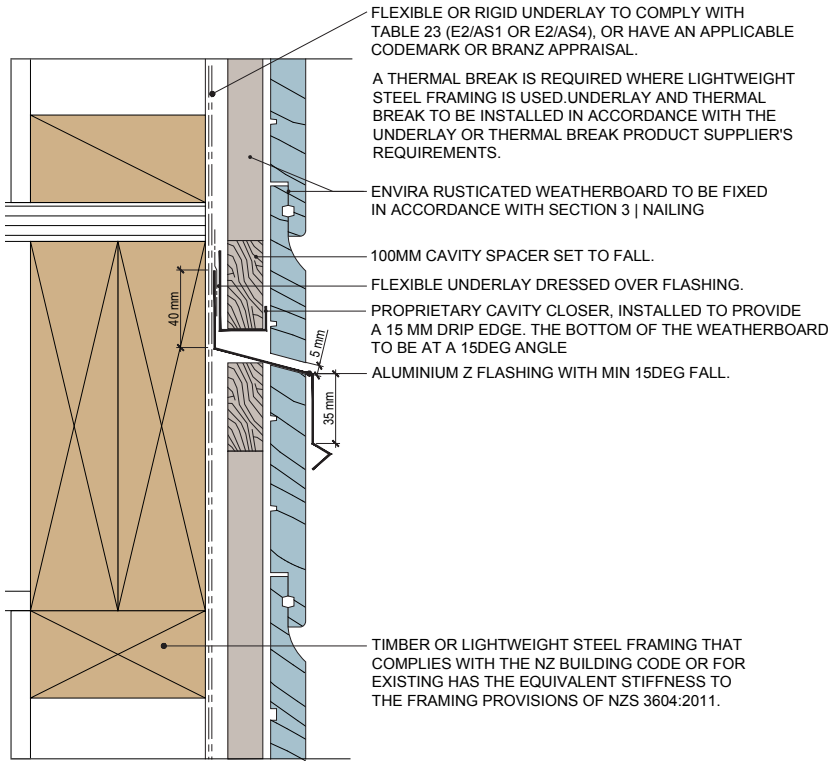
4031 2D :



DATE: 16/04/2024 check for updates and download
2D files in PDF, DWG or DXF format at www.niagara.nz

Rusticated Cavity Fix Mid-Floor Junction

4032 2D :



ENVIRA WEATHERBOARD SYSTEM WARRANTY

1. Product Warranty

- 1.1 Niagara Sawmilling Company Limited (Niagara) warrants for a period of 25 years from the date of purchase that its Envira Weatherboard System (Products) will be free from production defects and will be resistant to cracking, rotting and damage from borer attacks, to the extent set out in Niagara's product literature current at the time of installation, subject always to the conditions and limits on liability below (Warranty).
- 1.2 The Envira Weatherboard System Technical Manuals set out the approved and recommended methods for cladding installation. To request a copy of the Envira Weatherboard System Technical Manuals, please phone toll free: 0800 36 78 46 (Monday to Friday 8am – 5pm), or email: sales@niagara.nz, or download online at www.niagara.nz

2. Conditions of Warranty

- 2.1 The Warranty is strictly subject to the following conditions:
 - 2.1.1 The Products must be installed by a competent and qualified builder, strictly in accordance with:
 - (a) the Envira Weatherboard System Technical Manuals current at the time of installation, utilising Envira Weatherboard System components or products specified in the Envira Weatherboard System Technical Manuals; and
 - (b) all relevant laws and regulations.Where the Envira Weatherboard System Technical Manuals do not provide suitable detail for installation of the Products then installation must be in accordance with best trade practice determined in consultation with the relevant local or regional council or such other appropriate organisation or authority and the designer of the building works.
 - 2.1.2 The Products must be maintained strictly in accordance with the Envira Weatherboard System Technical Manuals. Further, all other products including coating and jointing systems applied to, or used in conjunction with, the Products must be applied, installed and maintained strictly in accordance with the relevant manufacturer's instructions and best trade practice.
 - 2.1.3 The building works in which the Products have been incorporated must be designed and constructed in strict compliance with all relevant provisions of the current New Zealand Building Code, regulations and standards, and the building consent relating to the building works.
 - 2.1.4 If any remedial work undertaken in relation to the Warranty involves re-coating of the Products, the customer acknowledges and agrees that there may be slight colour differences between the original and replacement Products due to the effects of weathering and variations in materials over time.

3. Limits on Liability

- 3.1 Niagara will not be liable to the customer for any breach of Warranty unless the customer gives Niagara written notice of any claim for breach of Warranty within 30 days of the defect becoming reasonably apparent.
- 3.2 In any event, the customer's sole remedy under the Warranty is (at Niagara's discretion) that Niagara will either supply replacement Products, rectify the affected Products where such Products are capable of rectification, or pay for the reasonable cost of the replacement or rectification of the affected Products.
- 3.3 Aside from the remedy described in clause 3.2, Niagara will not be liable for any other losses or damages (whether direct or indirect) including property damage, personal injury, consequential loss, economic loss or loss of profits, whether arising under statute, contract, tort including negligence, or howsoever arising. Without limiting the foregoing, Niagara will not be liable for any claims, damages or defects arising from, or in any way attributable to:
 - 3.3.1 poor workmanship;
 - 3.3.2 poor design or detailing;
 - 3.3.3 incorrect design of the structure;
 - 3.3.4 settlement or structural movement and/or movement of materials to which the Products are attached;
 - 3.3.5 acts of God including, but not limited to, earthquakes, cyclones, floods or other severe weather conditions or unusual climatic conditions;
 - 3.3.6 efflorescence or performance of paint/coatings applied to the Products;
 - 3.3.7 normal wear and tear; or
 - 3.3.8 growth of mould, mildew, fungi, bacteria, or any organism on the surface of any Products (whether on the exposed or unexposed surfaces).
- 3.4 All warranties, conditions, liabilities and obligations other than those specified in this Warranty are excluded to the fullest extent permitted by law. The Warranty does not exclude or modify any legal rights a customer may have under the Consumer Guarantees Act 1993. Unless otherwise specified in writing at the time of sale, Niagara assumes no liability for the Products being fit for any particular purpose under the Building Act 2004, other legislation or at common law.

ENVIRA[®]

BY NIAGARA




www.niagara.nz

SOUTH ISLAND SALES & DISTRIBUTION

 **0800 36 78 46**  145 Alford Forest Road
 sisales@niagara.nz Ashburton 7700, New Zealand

NORTH ISLAND SALES & DISTRIBUTION

 **0800 36 78 46**  24 - 26 Oliver Street,
 nisales@niagara.nz Cambridge 3434, New Zealand