

User Manual

Please review before operating vac.

Wet/Dry Vacuum

MODEL MC12V1800
12VDC

Household and Workshop Use.

ATTENTION!

Read all safety rules carefully before attempting to operate.
Retain for future reference.

DANGER!

Never operate this unit when flammable materials or vapors are present because electrical devices produce arcs or sparks that can cause a fire or explosion. NEVER OPERATE UNATTENDED.

IMPORTANT SAFETY INSTRUCTIONS

When using an electrical appliance, basic precautions should always be followed, including the following: **READ ALL INSTRUCTIONS BEFORE USING THIS APPLIANCE.**

WARNING – TO REDUCE THE RISK OF FIRE, ELECTRIC SHOCK OR INJURY:

1. Do not expose to rain – store indoors.
2. Do not allow to be used as a toy. Close attention is necessary when used by or near children.
3. Use only as described in this manual. Use only Manufacturer's recommended attachments.
4. Do not use with damaged cord or plug. If appliance is not working as it should, has been dropped, damaged, left outdoors or dropped into water, contact Shop-Vac Corporation for assistance.
5. Do Not: pull or carry by cord, use cord as a handle, close a door on cord or pull cord around sharp edges or corners. Keep cord away from heated surfaces.
6. Do not unplug by pulling on cord. To unplug, grasp the plug; not the cord.
7. Do not handle plug or appliance with wet hands.
8. Do not put any object into openings. Do not use with any openings blocked; keep free of dust, lint, hair and anything that may reduce air flow.
9. Keep hair, loose clothing, fingers and all parts of body away from openings and moving parts.
10. Do not pick up anything that is burning or smoking, such as cigarettes, matches or hot ashes.
11. Do not use without dust bag and/or filters in place.
12. Use extra care when cleaning on stairs.
13. Do not use to pick up flammable or combustible liquids such as gasoline or use in areas where they may be present.
14. Do not use your cleaner as a sprayer of flammable liquids such as oil base paints, lacquers, household cleaners, etc.
15. Do not vacuum toxic, carcinogenic, combustible or other hazardous materials such as asbestos, arsenic, barium, beryllium, lead, pesticides or other health endangering materials. Specially designed units are available for these purposes.
16. Do not pick up soot, cement, plaster or drywall dust without cartridge filter and collection filter bag in place. These are very fine particles that may pass through the foam and affect the performance of the motor or be exhausted back into the air. Additional collection filter bags are available.
17. Do not incinerate this appliance even if it is severely damaged. The batteries can explode in a fire.
18. Do not charge the unit outdoors.
19. Turn unit off before removing the battery assembly.
20. Use special care when emptying heavily loaded tanks.
21. The battery must be removed from the appliance before it is scrapped. The appliance must be disconnected from the supply mains when removing the battery. The battery is to be disposed of safely.
22. Use only the charger supplied by the manufacturer to recharge battery assembly.
23. To avoid spontaneous combustion, empty tank after each use.
24. The operation of a utility vac can result in foreign objects being blown into eyes, which can result in eye damage. Always wear safety goggles when operating vacuum.
25. **STAY ALERT.** Watch what you are doing and use common sense. Do not use vacuum cleaner when you are tired, distracted or under the influence of drugs, alcohol or medication causing diminished control.
26. **WARNING!** Do **NOT** use this vacuum cleaner to vacuum lead paint debris because this may disperse fine lead particles into the air. This vacuum cleaner is not intended for use under EPA Regulation 40 CFR Part 745 for lead paint material cleanup.
27. This appliance can be used by children aged from 8 years and above and persons with reduced physical, sensory or mental capabilities or lack of experience and knowledge if they have been given supervision or instruction concerning use of the appliance in a safe way and understand the hazards involved. Children shall not play with the appliance.
28. Cleaning and user maintenance shall not be made by children without supervision.

shop•vac[®]

BRAND

the **Original** wet/dry vac

AUTHORIZED SHOP-VAC SERVICE CENTRES

If your Shop-Vac Wet/Dry Vac ever needs repair or maintenance during the warranty period or any time thereafter, there are Authorized Shop-Vac Service Centres located across the country (please see the enclosed separate pamphlet).

Do not attempt to service your Shop-Vac Wet/Dry Vac beyond that described in the User Manual. For all other servicing, please refer to a qualified Shop-Vac Service Centre.

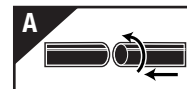
SAVE THESE INSTRUCTIONS

LIMITED TWO-YEAR WARRANTY

Shop-Vac warrants the vacuum cleaner for two years from the date of purchase to correct by repair or parts replacement without charge, any product defect due to faulty material or workmanship provided that the vacuum cleaner is not used for rental service. This warranty does not cover accessories. Simply return the complete unit, (transportation prepaid), to the Authorized Shop-Vac Service Centre nearest you (a complete list of Authorized Shop-Vac Service Centres is included with each vacuum cleaner). Shop-Vac assumes no responsibility for damage or faulty performance caused by misuse or careless handling, or where repairs have been made or attempted by others. Proof of purchase date is required. This warranty gives you specific legal rights, and you may also have other rights which vary from state to state. Our goods come with guarantees that cannot be excluded under the Australian Consumer Law. You are entitled to a replacement or refund for a major failure and for compensation for any other reasonably foreseeable loss or damage. You are also entitled to have the goods repaired or replaced if the goods fail to be of acceptable quality and the failure does not amount to a major failure.

UNPACKING AND SET-UP

1. Remove the tank cover by pushing in the side lugs with thumbs and lifting up on the tabs of the tank cover. Remove any accessories, which may have been shipped in the tank.
2. Before replacing tank cover, refer to Dry Pick Up Operation or Wet Pick Up Operation in this manual to ensure you have the proper filters installed for your cleaning operation.
3. Replace tank cover on the tank by aligning tabs with the lugs. Press down firmly on the upper housing until tank cover snaps into place.
4. Mount the wall bracket and tool holder following the instructions and illustrations in this manual.
5. Refer to the Operation section to select the power source needed for your cleaning operation. If using the battery, charge the unit following the instructions and illustrations under the Charging Battery section of this manual.
6. Insert machine hose end into inlet of tank. Twist slightly to tighten the connection (**Figure A**).
7. Attach one of the cleaning accessories (depending on your cleaning requirements) on the accessory end of the hose. Twist slightly to tighten the connection (**Figure A**).
8. Your cleaner is ready for use. **I = ON, O = OFF**



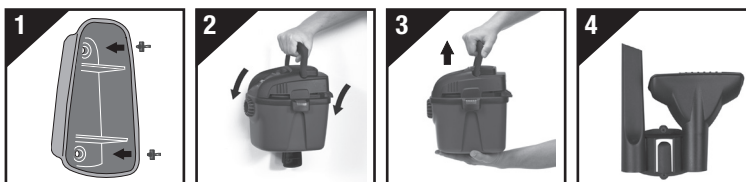
NOTE: MANY MORE USEFUL TOOLS ARE AVAILABLE AT YOUR LOCAL DEALER OR SHOP-VAC® WEBSITE.

INSTALLING WALL MOUNTING BRACKET

1. Choose a location to mount the wall bracket. To charge the vacuum while mounted to the wall, the location must be close enough to a wall outlet for the charger cord to reach when plugged into vacuum. The location must be strong enough to hold the combined weight of the vacuum and the wall bracket. Do not place charger in an area of extreme heat or cold. Charger works best at temperatures above 50° F (10° C) and below 100° F (38° C).

⚠ WARNING – INADEQUATE MOUNTING COULD ALLOW THE UNIT TO FALL, CAUSING INJURY AND/OR DAMAGE TO THE UNIT.

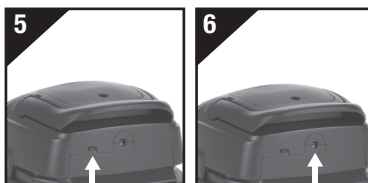
2. Secure wall bracket to mounting surface with 2 screws provided or other suitable fastener. (**NOTE:** The screws provided are adequate ONLY for mounting into wood. Be sure to use the proper, suitable fasteners for mounting vacuum to a surface other than wood.) Be sure wall bracket is level (**Figure 1**).
3. Install vacuum by aligning groove on either side of tank to engage as the vacuum is lowered onto the wall bracket (**Figure 2**).
4. To avoid possible injury or damage by dislodging vacuum from wall bracket or dropping tank during unlatching, always remove the entire vacuum from wall bracket and set on floor to empty tank or service filter.
5. Before removing vacuum from wall bracket, check to make sure tank cover is secured to tank. To remove vacuum from wall bracket, grasp top handle with one hand and tank bottom with other hand. Slide vacuum off of wall bracket by lifting straight up on vacuum (**Figure 3**).
6. The tool holder can be mounted on the wall in close proximity to the wall bracket (**Figure 4**). Secure with mounting hardware provided.



CHARGING BATTERY

NOTE: THE BATTERY PACK HAS BEEN SHIPPED IN A LOW CHARGE CONDITION. BATTERY REQUIRES AN INITIAL FULL CHARGE (12- 16 HOURS) PRIOR TO FIRST USE. OPTIMUM PERFORMANCE OF UNIT WILL BE ACHIEVED AFTER BATTERY HAS BEEN CHARGED AND USED THREE TIMES. THE BATTERY ON THIS UNIT SHOULD NOT BE RUN COMPLETELY DOWN. IF THE LIGHT BLINKS RED, THE BATTERY IS NOT TAKING THE CHARGE.

1. Make sure the power switch on top of the vacuum is in the off position.
2. With the rear of the vacuum facing you, locate the selector switch to the left of the charging port (**Figure 5**). Move the switch to the left position, if not already there.
3. Insert plug on charger into charging port on rear of vacuum (**Figure 6**). **NOTE:** Battery will only charge using the wall charger. It will not charge using the vehicle power cord (**not standard on all models**).
4. Plug charger into wall outlet. Light on charger will be red when unit is charging and change to green when it is fully charged. Do not turn the vacuum on while plugged into the charger.
5. Once vacuum is fully charged, unplug charger from wall outlet and back of vacuum.
6. If the unit does not charge while it is connected to the charger and the charger is plugged into an outlet, the battery charger or the battery in the unit may be bad. Battery must be recycled or disposed of properly.



OPERATION

⚠ DANGER



THIS EQUIPMENT INCORPORATES PARTS SUCH AS SWITCHES, MOTORS OR THE LIKE THAT TEND TO PRODUCE ARCS OR SPARKS THAT CAN CAUSE AN EXPLOSION. DO NOT PICK UP FLAMMABLE, COMBUSTIBLE, OR HOT MATERIALS. DO NOT USE AROUND EXPLOSIVE LIQUIDS OR VAPORS, AS ELECTRICAL DEVICES PRODUCE ARCS OR SPARKS WHICH CAN CAUSE A FIRE OR EXPLOSION - DO NOT USE AT FILLING STATIONS OR ANYWHERE GASOLINE IS STORED OR DISPENSED.



⚠ WARNING – ALWAYS TURN UNIT OFF AND DISCONNECT FROM CHARGER OR VEHICLE OUTLET BEFORE REMOVING THE TANK COVER.

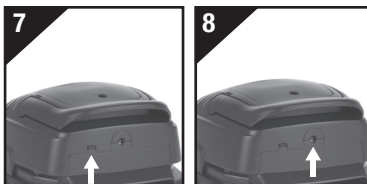
⚠ DANGER

NEVER OPERATE UNATTENDED!

The vacuum may be operated using the internal battery or by plugging it into a vehicle outlet. With the rear of the vacuum facing you, locate the selector switch to the left of the charging port (Figure 7).

BATTERY OPERATION: To use the internal battery, move the selector switch to the left position. If battery power discharges before the cleaning job is finished, follow the Charging Battery instructions in this manual to recharge the battery. **NOTE:** The battery should **NOT** be run completely down.

VEHICLE OUTLET: To use a vehicle outlet, move the selector switch to the right position. Insert plug on vehicle power cord into charging port on rear of vacuum (Figure 8). Plug vehicle power cord into vehicle outlet. **NOTE:** The vehicle outlet may not have power while the vehicle is turned off. Refer to the operation manual that came with the vehicle.

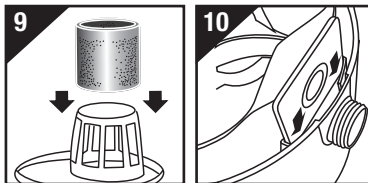


⚠ CAUTION – RISK OF FIRE. DO NOT REPLACE ANY VEHICLE FUSE WITH A RATING HIGHER THAN RECOMMENDED BY THE VEHICLE MANUFACTURER. THIS PRODUCT IS RATED TO DRAW 11 AMPERES FROM A 12 V VEHICLE OUTLET. ENSURE THAT THE ELECTRICAL SYSTEM IN YOUR VEHICLE CAN SUPPLY THIS PRODUCT WITHOUT CAUSING THE VEHICLE FUSING TO OPEN. THIS CAN BE DETERMINED BY MAKING SURE THE FUSE IN THE VEHICLE WHICH PROTECTS THE OUTLET IS RATED HIGHER THAN 12 AMPERES. INFORMATION ON THE VEHICLE FUSE RATINGS ARE TYPICALLY FOUND IN THE VEHICLE OPERATOR'S MANUAL. IF A VEHICLE FUSE OPENS REPEATEDLY, DO NOT KEEP ON REPLACING IT. THE CAUSE OF THE OVERLOAD MUST BE FOUND. ON NO ACCOUNT SHOULD FUSES BE PATCHED UP WITH TIN FOIL OR WIRE AS THIS MAY CAUSE SERIOUS DAMAGE ELSEWHERE IN THE ELECTRICAL CIRCUIT OR CAUSE FIRE.

DRY PICK UP OPERATION

INSTALLING FOAM SLEEVE AND COLLECTION BAG

1. Install foam sleeve and collection bag to pick up dust and dry material only. If the foam sleeve has been used to pick up liquids, the foam sleeve must be cleaned and dried before installing for dry pick up.
2. With tank cover in an upside down position, slide foam sleeve down over filter cage pulling until foam sleeve completely covers filter cage (Figure 9).
3. To install collection bag, remove hose from inlet.
4. Slide collar of filter bag into retainer guides (Figure 10).
5. When secured in place, expand bag and position around the inside of the tank. The collection bag should always be in position when using the foam sleeve for dry pick up.



⚠ CAUTION – KEEP FILTERS CLEAN

EFFICIENCY OF THE VACUUM IS LARGELY DEPENDENT ON THE FILTER. A CLOGGED FILTER CAN CAUSE OVERHEATING AND POSSIBLY DAMAGE THE CLEANER. CHECK THE FILTER PERIODICALLY AND REPLACE AS REQUIRED. DO NOT MACHINE WASH OR DRY. DO NOT USE THE VACUUM OR FILTERS FOR COLLECTING HAZARDOUS OR OTHER HEALTH ENDANGERING MATERIALS.

WET PICK UP OPERATION

Remove ALL dirt and debris found in the tank. The vacuum requires only a minimum of conversion when going from dry to wet pick up. Wet pick up requires the foam sleeve (**not standard with all models**) to be in position over the lid cage. Misting in exhaust air may occur if the foam sleeve becomes saturated during wet pick up. If misting occurs, remove foam sleeve and allow to dry or, replace with another foam sleeve to eliminate the misting and possible dripping of liquid around the lid. Turn the unit off immediately upon completing a wet pick up job or when tank is full and ready to be emptied. Raise the hose to drain any excess liquid into the tank. The interior of the tank should be periodically cleaned.

The foam sleeve should be cleaned periodically as described in the following steps:

1. Always turn unit off and disconnect from charger or vehicle outlet before removing the tank cover. Place tank cover in an upside down position. Remove foam sleeve by sliding it up and off the lid cage.
2. Shake excess dust off foam sleeve with a rapid up and down movement.
3. Hold foam sleeve under running water for a minute or two, rinsing from the inside. A water wash is not always required, depending on the condition of the foam sleeve.
4. Gently wring out excess water, blot foam sleeve with a clean towel, and allow to dry. The foam sleeve is now ready to be reinstalled on the lid cage.

NOTE: WET PICK UP ACCESSORIES SHOULD BE WASHED PERIODICALLY, ESPECIALLY AFTER PICKING UP WET, STICKY KITCHEN ACCIDENTS. THIS CAN BE ACCOMPLISHED WITH A WARM SOLUTION OF SOAP AND WATER.

EMPTYING LIQUID WASTE FROM THE TANK

Your wet/dry vacuum may be emptied of liquid waste by removing the tank cover. To empty, stop the motor. If the vacuum is plugged into an outlet, remove the plug from the outlet. Remove the tank cover and deposit the liquid waste contents in a suitable drain. After the tank is empty, return the cover to its original position. To continue use, start the motor.

AUTOMATIC SUCTION SHUT-OFF

The vacuum is equipped with an automatic suction shut-off that operates when picking up liquids. As the level of the liquid rises in the tank, an internal float rises until it seats itself against a seal at the intake of the motor, shutting off suction. When this happens, the motor will develop a higher than normal pitch noise and the suction is drastically reduced. If this occurs, turn unit off immediately. Failure to turn unit off after float rises and shuts off suction will result in extensive damage to the motor. To continue use, empty the liquid waste from the tank as outlined in the previous paragraph.

NOTE: IF ACCIDENTALLY TIPPED OVER, THE VACUUM COULD LOSE SUCTION. IF THIS OCCURS, TURN UNIT OFF AND PLACE VAC IN UPRIGHT POSITION. THIS WILL ALLOW THE FLOAT TO RETURN TO ITS NORMAL POSITION, AND YOU WILL BE ABLE TO CONTINUE OPERATION.

STORAGE

Before storing your vacuum cleaner the tank should be emptied and cleaned. **The cleaner should be stored indoors.**

LUBRICATION

No lubrication is necessary as the motor is equipped with lifetime lubricated bearings.