



30800 Rancho Viejo Road, San Juan Capistrano, CA 92675  
[www.Fluidmaster.com](http://www.Fluidmaster.com) for installation assistance

**WARNING**



DO NOT USE IN-CISTERN DROP-IN TOILET BOWL CLEANERS CONTAINING BLEACH OR CHLORINE. Use of such products will: (1) RESULT IN DAMAGE to Cistern components and MAY CAUSE FLOODING and PROPERTY DAMAGE and (2) VOID FLUIDMASTER WARRANTY. DO NOT overtighten nuts or cistern/bowl may crack. Always use quality Fluidmaster parts when installing or repairing. Fluidmaster will not be responsible or liable for use of non-Fluidmaster parts during installation or repair.

**NEED HELP?**

In Australia: 8am – 5pm  
 FREE CALL: 1 800 808 179

In New Zealand Phone: 09 415 5585

# FLUIDMASTER 400UK BOTTOM ENTRY TOILET CISTERN VALVE INSTALLATION INSTRUCTIONS

**IMPORTANT:** DO NOT use plumber's putty to seal this fitting.

The Valve shall be installed in compliance with AS/NZS 3500.1  
 Compatible with cistern tanks having bottom inlet water supply

**PLUMBER:** Please leave these instructions with your customer.

**CUSTOMER:** Instructions should be saved for future reference concerning this valve's operation and maintenance.

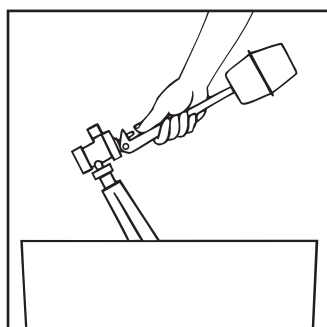
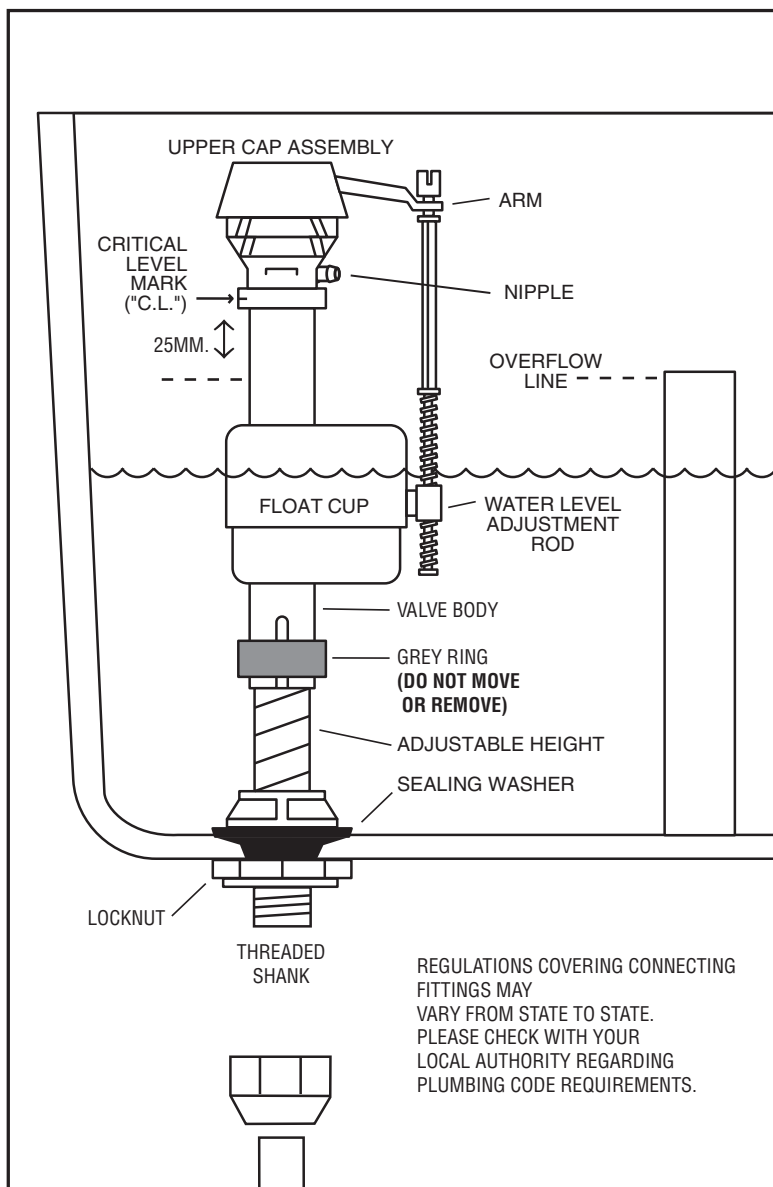
**CAUTION:** Operating pressure 100-1000 KPA. Where water pressures exceed 1000 KPA, a pressure reducing valve shall be fitted.

Australia and New Zealand Representative:

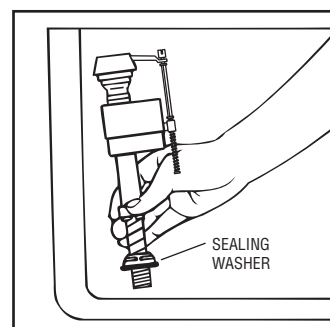
For complete warranty details, please visit our website at [www.Fluidmaster.com](http://www.Fluidmaster.com)

To present claims under this warranty, please contact your place of purchase or Fluidmaster Holding Australia Pty Ltd.

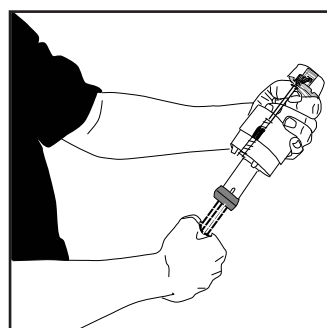
**AUSTRALIA:**  
 Fluidmaster Holding Australia Pty Ltd.  
 5B/100 New Street  
 Ringwood, Victoria 3134 Australia  
 Phone: +61 (03) 8870 2555  
 Email: [salesau@fluidmaster.com](mailto:salesau@fluidmaster.com)  
[www.Fluidmaster.com.au](http://www.Fluidmaster.com.au)



1. Turn off water supply to toilet cistern. Disconnect pipe work and remove old valve from toilet cistern.

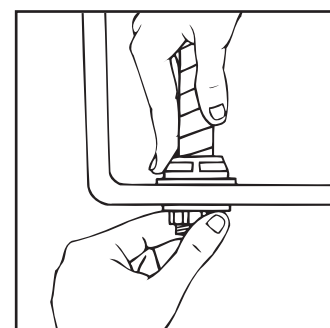


2. Place sealing washer on threaded shank and position valve in cistern, passing threaded shank through hole in cistern. **Before installing, adjust valve height. See Step 3.**



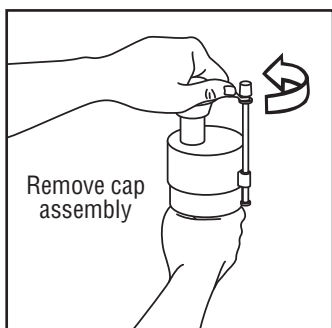
3. To adjust valve height, remove it from cistern. **Twist threaded shank in or out of valve body without moving grey ring** (height adjusts from 225mm. to 350mm. – the clicking noise heard is normal).

**NOTE:** Adjust height so that the critical level mark (marked "C.L.") on the valve body is at least 25mm. ABOVE the overflow outlet in the cistern.

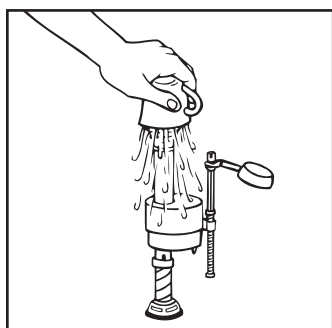


4. Position valve inside cistern and push down on the valve shank. Thread the locknut. **HAND TIGHTEN ONLY. DO NOT OVERTIGHTEN OR CISTERN MAY CRACK.** Reconnect water supply to valve. Hand tighten nut. **HAND TIGHTEN ONLY. DO NOT OVERTIGHTEN OR CISTERN MAY CRACK.** Make sure float moves up and down freely. **IMPORTANT: See over for supply tube installation.**

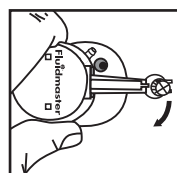
**IMPORTANT: SAND AND RUST MOVE THROUGH WATER PIPES. ALWAYS CLEAR DEBRIS FROM WATER LINE TO COMPLETE INSTALLATION**



5. Make sure water supply is off. With **RIGHT HAND** push float cup up. (See drawing) Hold valve shaft tight. With **LEFT HAND** grab top cap and place thumb on the side of lever arm. Twist cap and lever anti-clockwise 1/8<sup>th</sup> of a turn to unlock. Let cap assembly hang on float cup. You may need to push down on the valve top while turning.



6. While holding a container over the uncapped VALVE to prevent splashing, turn water supply on and off a few times. Leave water supply off.



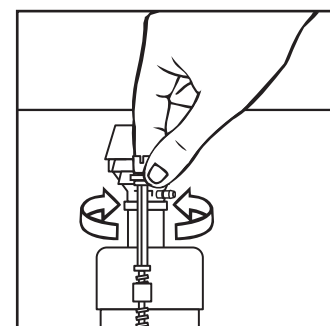
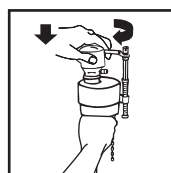
**REPLACING TOP CAP**

7. Place cap assembly on top of valve body by aligning cap lever arm directly above nipple.

Press down on top cap while rotating top & arm clockwise to locked position. You may need to hold valve shaft in order to lock top cap.

When you turn on water supply and nothing comes through the fill valve, press down on top, and **turn clockwise** a little more. Turn on water supply.

Make certain top is turned to the locked position. Valve may not turn on if top is not fully turned to the locked position.



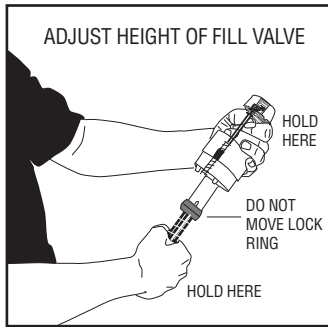
8. Turn on water supply. Submerge the FLOAT CUP under the water for 30 seconds. Adjust the water to desired level by turning WATER LEVEL ADJUSTMENT ROD and moving FLOAT CUP up or down. **Water level should be set approximately 25mm. below overflow outlet or to water line on cistern.**

(SEE REVERSE FOR IMPORTANT INSTALLATION TIPS) →

## IMPORTANT INSTALLATION TIPS

(See reverse for complete installation instructions)

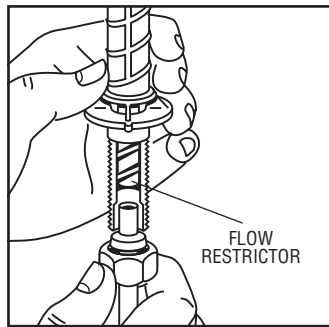
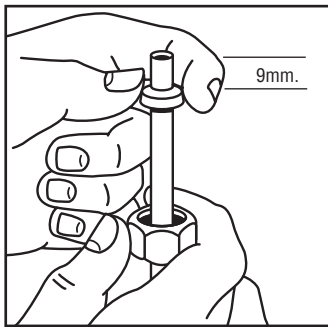
### SETTING THE VALVE HEIGHT:



The valve height should be adjusted so that the critical level mark "C.L." on the valve is located at least 25mm. ABOVE the overflow outlet. The 400UK valve can be adjusted from 225mm. to 350mm. to fit most cisterns by TWISTING THE SHANK in or out of the valve body.

When the valve height is being adjusted, an audible clicking noise can be heard. After the correct valve height has been set, should you hear the "clicking" noise as you continue to install the valve, it means you have accidentally adjusted the height and you should be sure the valve is set to the correct height.

### SUPPLY TUBE INSTALLATION:



Care should be taken when installing the 400UK with a copper water supply line to **prevent the copper pipe from coming into contact with the optional valve filter and/or restrictor. This may block the flow of water or cause a slow refill of the cistern.**

The copper pipe should be inserted no more than 9mm. into the inlet of the shank. An easy way to assure this is to put the washer, crox or olive on the pipe 9mm. from the end.

Insert the pipe into the shank and tighten down the nut without moving the pipe further into the shank.

### TROUBLESHOOTING:

**YOU HAVE GOOD MAINS PRESSURE** but you can't get water into the cistern, or refill is slow:

- Check supply tube installation (See above).
- Check that the cap assembly is in the locked position.

**VALVE WON'T SHUT OFF** – Repeat Step 5 of instructions.

**VALVE TURNS ON AND OFF** during periods of non use – **WATER WASTE SIGNAL:**

- Check your outlet valve – The outlet valve is worn or the outlet washer is worn.

**IN AREAS WITH UNUSUALLY HIGH WATER PRESSURE** above 1000 KPA, a pressure reduction valve should be fitted. If less than 1000 KPA, the flow rate can be reduced by adjusting the stop cock. The inlet valve's quick filling action means the stop cock may not have to be fully open when filling the cistern.

#### LOW PRESSURE APPLICATION:

Header or storage tank water supply (pressure below 100 KPA):

1. Remove flow restrictor from inside threaded inlet shank (see diagram above). In most cases this will allow enough water to operate valve normally. If not, see #2 below (next step).
2. Replace seal with optional low pressure seal. **ASK YOUR DEALER FOR PART No. 242MP061(B212S)** (see below for seal replacement instructions).

#### Service Parts Available Ask Your Dealer



No. 385UK061  
Replacement Cap Assembly  
includes Standard Seal

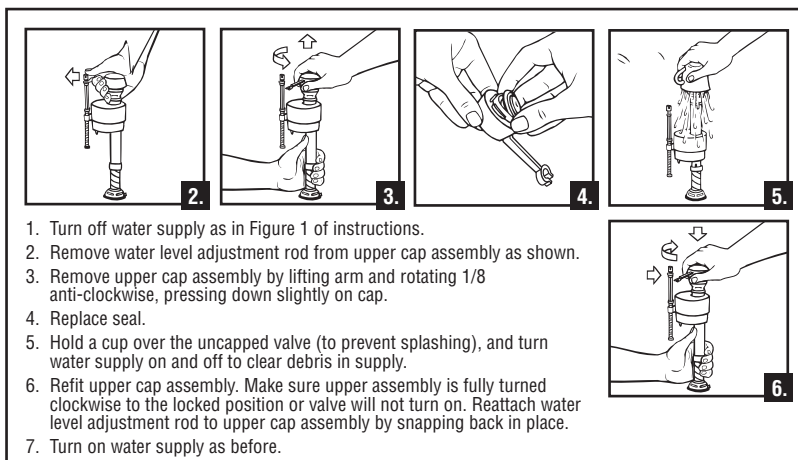


No. 242UK061  
Standard  
Replacement Seal



No. 242MP061 (B212S)  
Low Pressure  
Replacement Seal

## MAINTENANCE & SEAL REPLACEMENT



1. Turn off water supply as in Figure 1 of instructions.
2. Remove water level adjustment rod from upper cap assembly as shown.
3. Remove upper cap assembly by lifting arm and rotating 1/8 anti-clockwise, pressing down slightly on cap.
4. Replace seal.
5. Hold a cup over the uncapped valve (to prevent splashing), and turn water supply on and off to clear debris in supply.
6. Refit upper cap assembly. Make sure upper assembly is fully turned clockwise to the locked position or valve will not turn on. Reattach water level adjustment rod to upper cap assembly by snapping back in place.
7. Turn on water supply as before.

**IF VALVE WON'T TURN ON OR SHUT OFF, OR REFILL OF CISTERN BECOMES SLOW** after valve has been in use for some time:

- A replacement seal may be needed. Ask your dealer for 242UK061 Replacement Seal or 242MP061 (B212S) if you have low water pressure (below 100 KPA) and install as shown at left.
- Check for debris under the seal and flush valve as in installation instructions (Step 5).

#### WATER WASTE SIGNAL:

**IF VALVE TURNS ON AND OFF DURING PERIODS OF NON USE:**

- Your outlet valve may be worn or need a replacement washer.

#### WARRANTY

Our goods come with guarantees that cannot be excluded under the Australian Consumer Law. You are entitled to a replacement or refund for a major failure and for compensation for any other reasonably foreseeable loss or damage. You are also entitled to have the goods repaired or replaced if the goods fail to be of acceptable quality and the failure does not amount to a major failure.

For complete warranty details, please visit our website at [www.Fluidmaster.com](http://www.Fluidmaster.com)

To present claims under this warranty, please contact your place of purchase or Fluidmaster Holding Australia Pty Ltd.

**FLUIDMASTER HOLDING AUSTRALIA PTY LTD.**  
5B/100 New Street  
Ringwood, Victoria 3134 Australia  
Phone: +61 (03) 8870 2555  
Email: [salesau@fluidmaster.com](mailto:salesau@fluidmaster.com)  
[www.Fluidmaster.com.au](http://www.Fluidmaster.com.au)

**PATENT NUMBERS** U.S.-244693, 245172, 3428966, 3429333, 3495803, 3669138, 4080986, 4100928, 4327941, 4416302; AUSTRALIA-421225, 423785, 427099, 433341, 489821, 587088; BELGIUM-699955, 769268; BRAZIL-991353; CANADA-834406, 834517, 842557, 842558, 842559, 842560, 849302, 857002, 925398, 1046892, 1065731, 1065732, 1065733, 1065734, 1130509; COLOMBIA-19919; GERMANY-2132631; GREAT BRITAIN-1298646, 1528291; HONG KONG-857; ITALY-807405, 935451; JAPAN-810259, 1039296, 1108738, 543961, 578536; MEXICO-129183, 1444000, 145652; NETHERLANDS-141630, 144013, 162449; SINGAPORE-270-1973; SOUTH AFRICA-72-8273, 72-8734; SPAIN-342777, 393324; SWEDEN-346348, 372584; SWITZERLAND-545389, 612471; TAIWAN-6937, 7168, 10051, 10077, UM-41880. Other U.S. and Foreign patents pending.