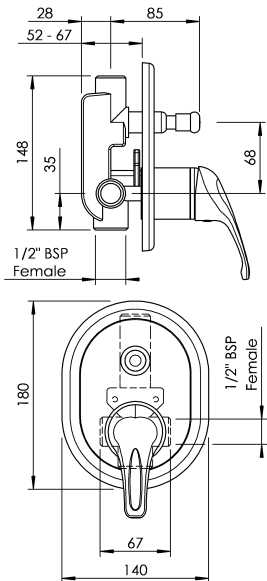


## ECHO STRATA SHOWER MIXER WITH DIVERTER



**CONSTRUCTION:** Brass body

**CARTRIDGE TYPE:** Ceramic

**CLASSIFICATION:** Suitable for mains pressures only

**INLET CONNECTIONS:** 1/2" BSP

**WORKING PRESSURE:** 150kPa - 500kPa (Max 1000kPa)

**OPERATING TEMPERATURE:** 5 °C - 65 °C

- 2 position diverter
- Easy switching The dial operated diverter makes it easy to switch between bath and shower functions, even under high pressure
- NEW handle design

E8216

Chrome

<http://www.methven.com/nz/our-other-brands/echo/echo-strata-shower-mixer-with-diverter>