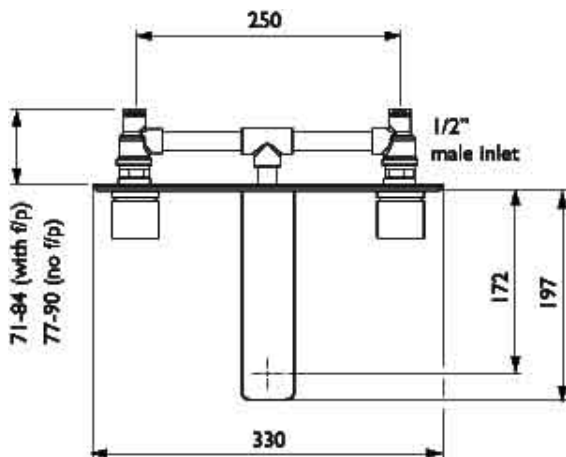
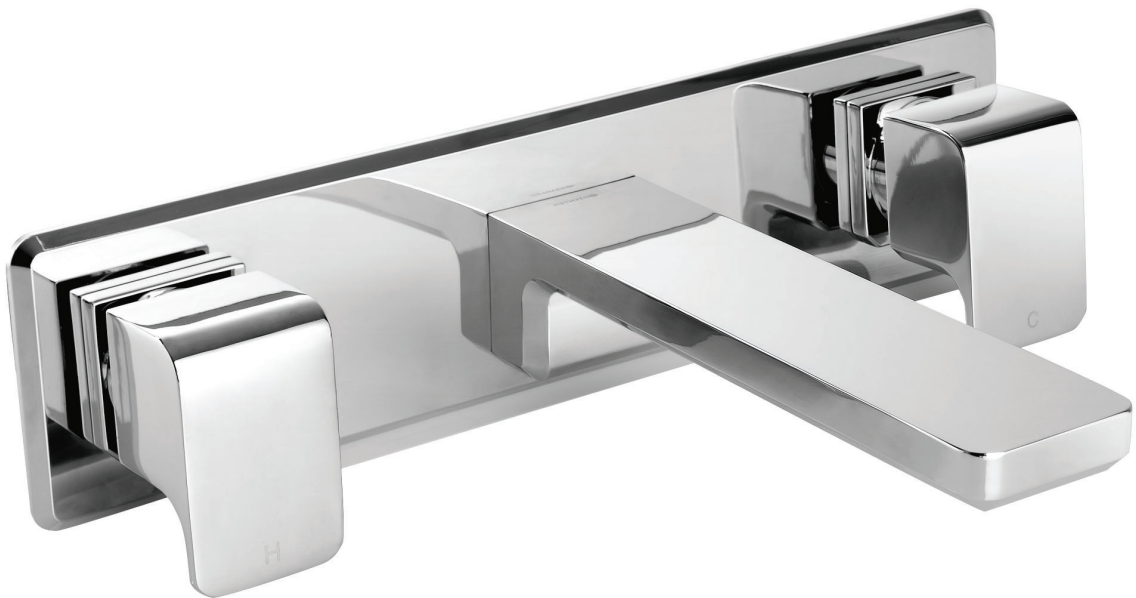


KIRI 3 HOLE WALL FAUCET



CONSTRUCTION: Brass body

CARTRIDGE: 15 mm ¼ turn ceramic disc

CLASSIFICATION: Suitable for **all pressure** systems

PIPE CONNECTION: 1/2" BSP Male

WORKING PRESSURE: 35 - 1000kPa

DIMENSIONS FOR FITTING: mains pressure 6.5 l/pm - low pressure 13.5 l/pm

OPERATING TEMPERATURE: 5 °C - 80 °C

- Metal faceplate
- Slim stream shape aerator
- Foam gasket seal against wall
- 4 star WELS rated on mains pressure (6.5 l/pm)
- 1 star WELS rated on low pressure (13.5 l/pm)

KIBWCP

Chrome

<http://www.methven.com/nz/collections/kiri/kiri-3-hole-wall-faucet>