

TECHNICAL INSTALLATION INSTRUCTIONS

INSTALLATION & WARRANTY

INSTALLATION NOTES

- All products must be inspected before installation. MICO Distribution is not liable for installation costs.
- Before installing, ALWAYS read the accompanying installation notes.
- Any wall to which a product is fixed must be of suitable construction to support that product's weight.
- To assist with future maintenance, it is strongly recommended that furniture and ceramics be fitted to a tiled surface (rather than butting tiles against an item).
- The glaze used on MICO Distribution's ceramic products is tough and non-porous. However, it must not be put under undue stress which may cause crazing or other damage:
 - ~ Do not over-tighten the waste – hand tighten only with the correct sealant and contoured waste
 - ~ Do not over-tighten tapware during installation
 - ~ Water temperature should not exceed 55°C
 - ~ Do not drop anything onto a glazed surface
- To avoid damage, tapware and showers MUST have the appropriate inline filters, and water pressure should not be no more than 500kPA.
- To avoid deterioration, it is important mirrors are kept dry of any moisture, especially along edges. (Refer to instructions for the appropriate cleaning method.)
- Cleaning products are to be used as per instructions. Use a moist soft cloth, micro fibre cloth or a diluted mild detergent. Never use products containing acids, bleach or caustic soda. Never use cleaners of a gritty, abrasive nature.
- Ceramic products are fired in a kiln, then cooled – a process which causes shrinking. Therefore, items may not be perfectly square or flat. Each product is checked to ensure it meets strict tolerances before dispatch.

WARRANTY

- Unless stated, all MICO Distribution products carry a five year warranty which covers manufacturing faults. However, MICO Distribution are not liable for any consequent loss or damage resulting from any failure.
- Shower hoses, cartridges, mirrors, cistern fittings, toilet seats, electrical and shower seals have a one year warranty.
- Inwall cisterns have a fifteen year warranty. Easily replaced cistern fittings (face plate; washers, valves etc) have a one year warranty.
- The warranty does not cover misuse, incorrect installation, neglect, modification, wilful damage, flooding, inappropriate cleaning methods, accidental damage and/or other events outside our control.
- Proof of purchase must be provided to claim any warranty.
- MICO Distribution shall not be liable for any labour, materials or any other costs should the wrong product be installed or if there are any noticeable defects resulting from installation.
- For full terms and conditions please visit www.mico.co.nz or ask for a copy to be supplied.

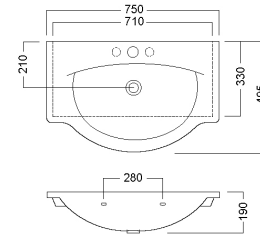
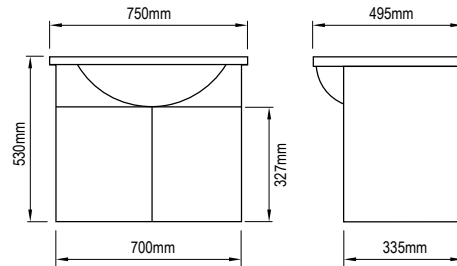
ATLANTA TECHNICAL DRAWINGS

BATHROOMWARE
FOR REAL KIWIS
Raymor

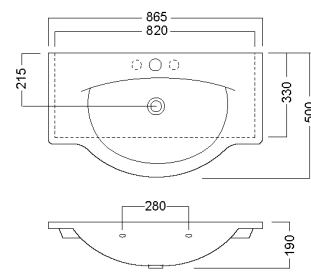
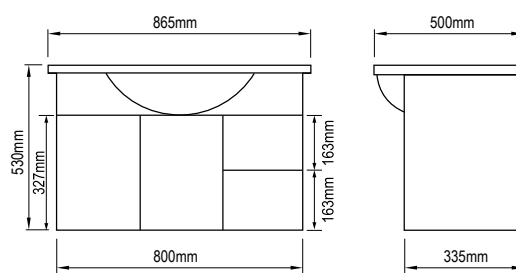
WALL HUNG UNITS

For all internal draw measurements see page 11.

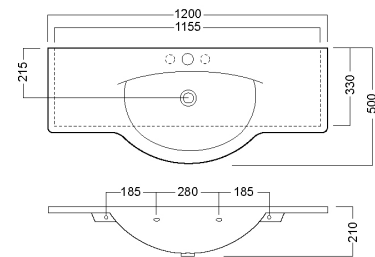
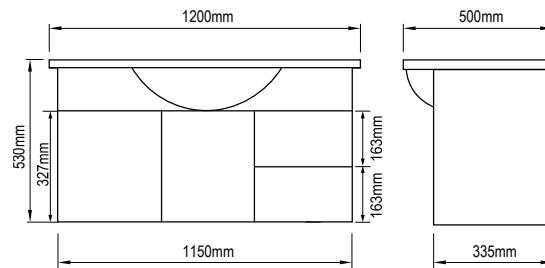
750mm
Two door



860mm
Two door
Two Drawer



1200mm
Two Door
Two Drawer

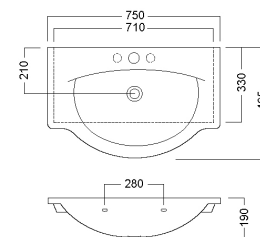
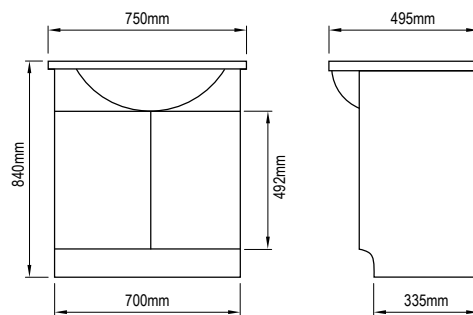


ATLANTA TECHNICAL DRAWINGS

FLOOR STANDING UNITS

For all internal draw measurements see page 11.

750mm
Two door



NB: All measurements are nominal and may change from time to time. If a project requires specific measurements, please confirm with manufacturer first.

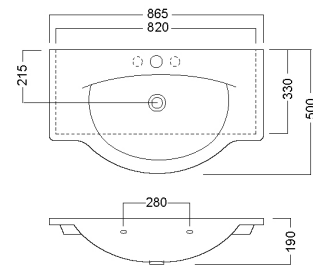
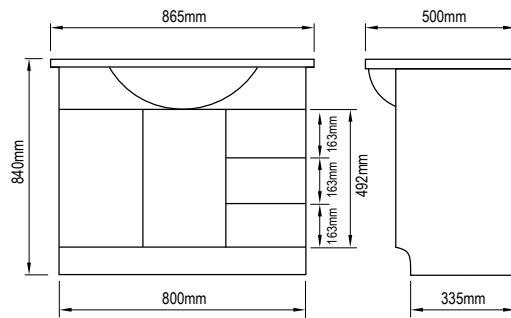
ATLANTA TECHNICAL DRAWINGS

BATHROOMWARE
FOR REAL KIWIS
Raymor

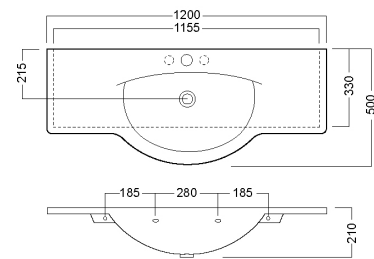
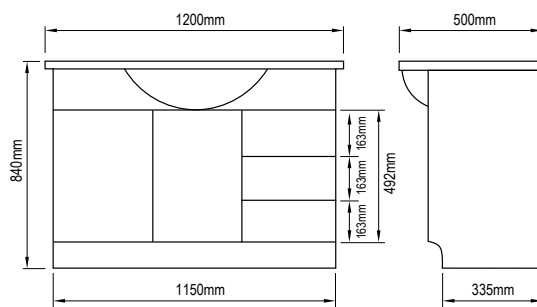
FLOOR STANDING UNITS - CONTINUED

For all internal draw measurements see page 11.

860mm
Two door
Two Drawer



1200mm
Two Door
Two Drawer

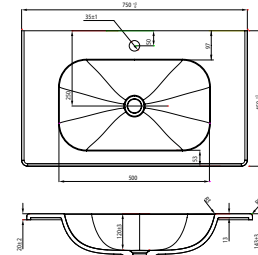
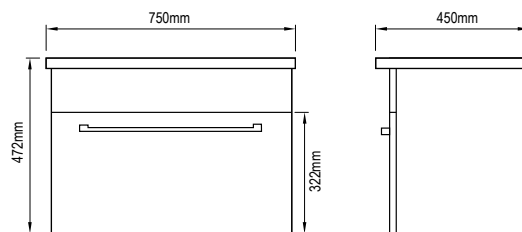


CAMBRIDGE TECHNICAL DRAWINGS

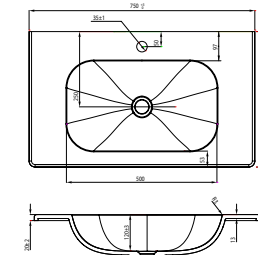
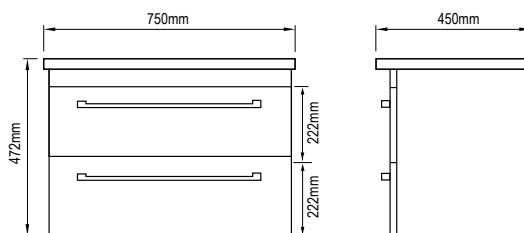
WALL HUNG UNITS

For all internal draw measurements see page 11.

750mm
One Drawer



750mm
Two Drawer



NB: All measurements are nominal and may change from time to time. If a project requires specific measurements, please confirm with manufacturer first.

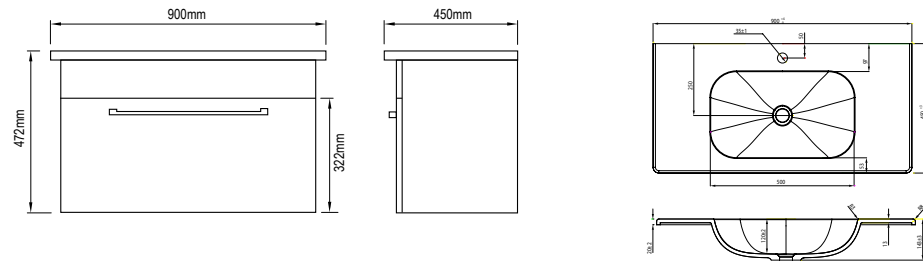
CAMBRIDGE TECHNICAL DRAWINGS

BATHROOMWARE
FOR REAL KIWIS
Raymor

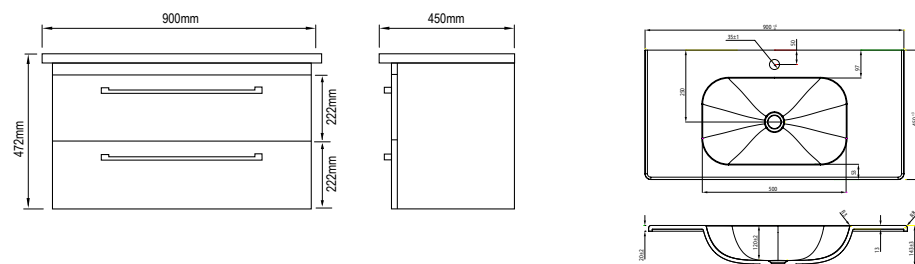
WALL HUNG UNITS - CONTINUED

For all internal draw measurements see page 11.

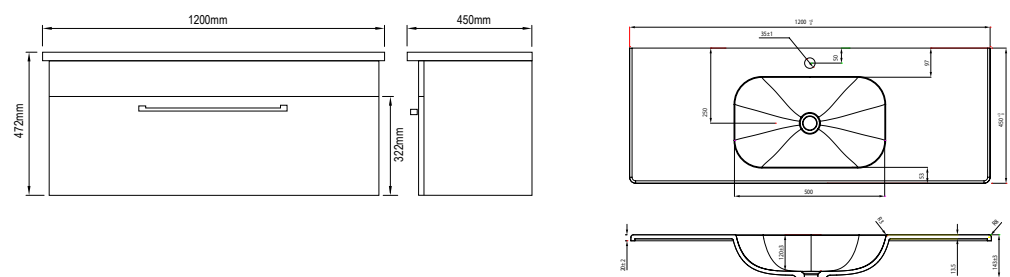
900mm
One Drawer



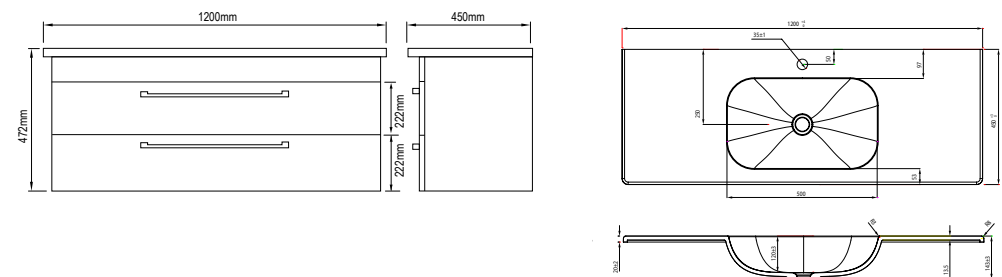
900mm
Two Drawer



1200mm
One Drawer



1200mm
Two Drawer

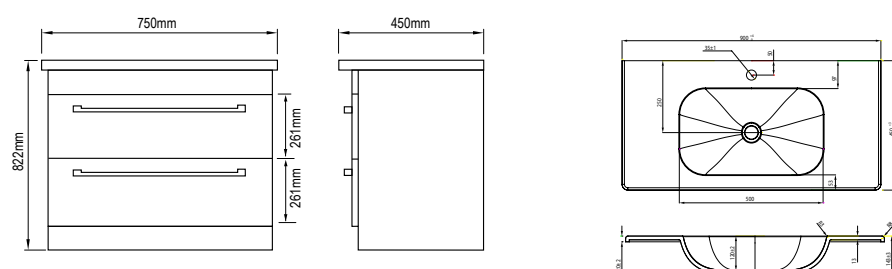


CAMBRIDGE TECHNICAL DRAWINGS

FLOOR STANDING UNITS

For all internal draw measurements see page 11.

750mm
Two door



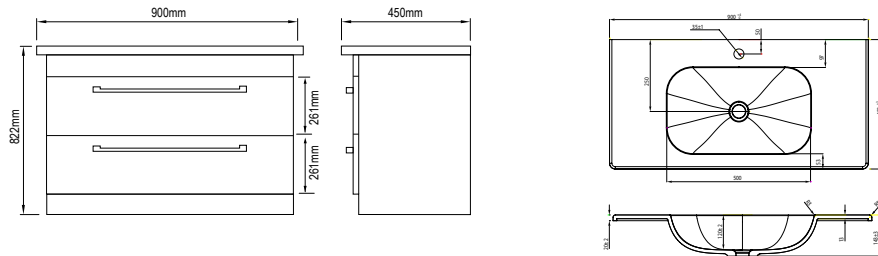
CAMBRIDGE TECHNICAL DRAWINGS

BATHROOMWARE
FOR REAL KIWIS
Raymor

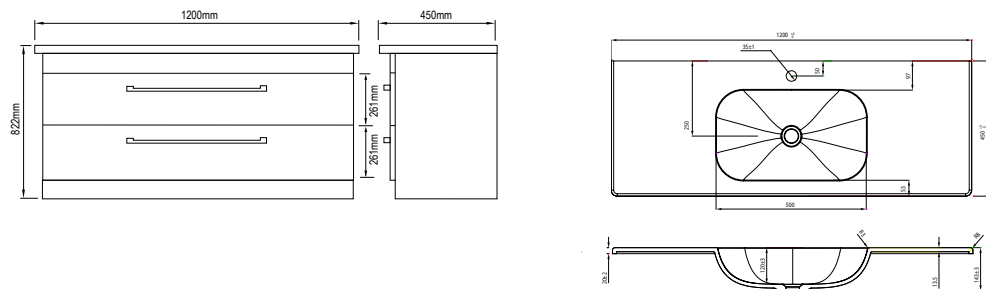
FLOOR STANDING UNITS - CONTINUED

For all internal draw measurements see page 11.

900mm
Two Drawer



1200mm
Two Drawer

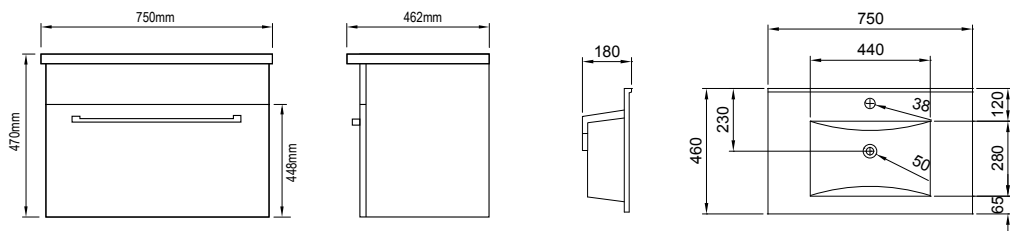


BOSTON TECHNICAL DRAWINGS

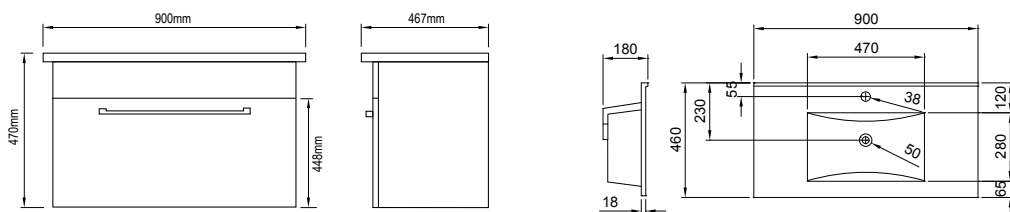
WALL HUNG UNITS

For all internal draw measurements see page 11.

750mm
One door



900mm
One door



NB: All measurements are nominal and may change from time to time. If a project requires specific measurements, please confirm with manufacturer first.

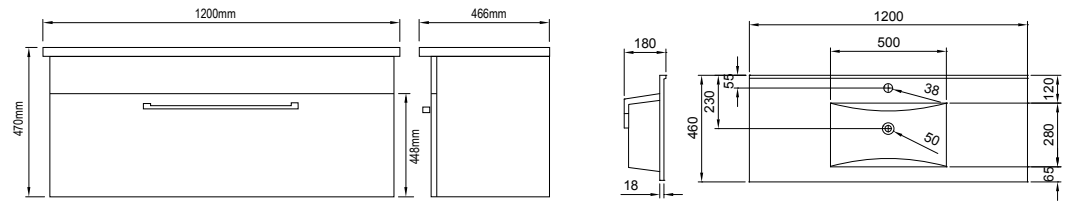
BOSTON TECHNICAL DRAWINGS

BATHROOMWARE
FOR REAL KIWIS
Raymor

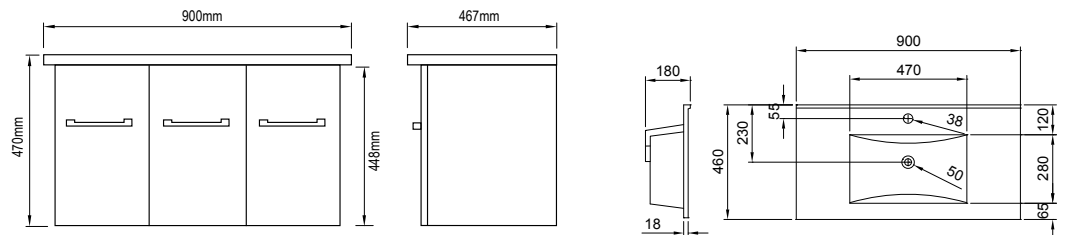
WALL HUNG UNITS - CONTINUED

For all internal draw measurements see page 11.

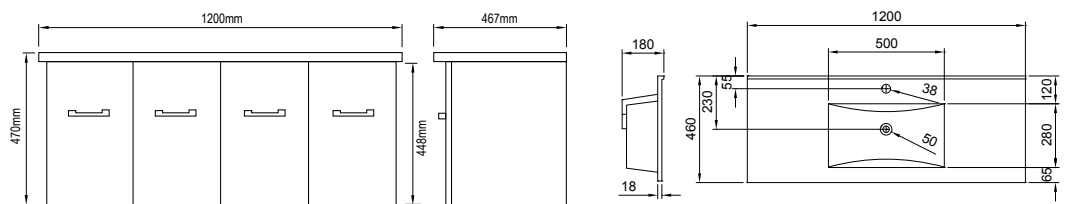
1200mm
One Drawer



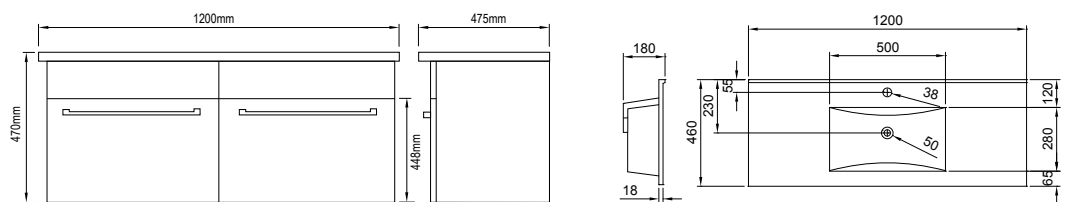
900mm
Two Door
One Drawer



1200mm
Two Door
Two Drawer



1200mm
Two Drawer
Side by Side
Double Bowl

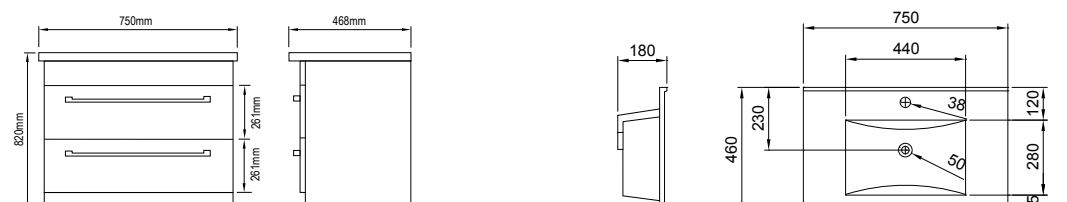


BOSTON TECHNICAL DRAWINGS

FLOOR STANDING UNITS

For all internal draw measurements see page 11.

750mm
Two Drawer



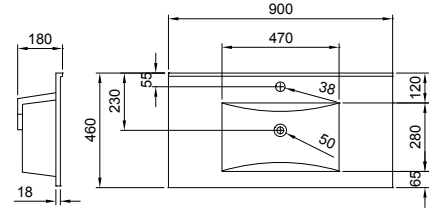
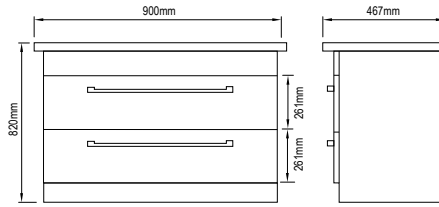
BOSTON TECHNICAL DRAWINGS

BATHROOMWARE
FOR REAL KIWIS
Raymor

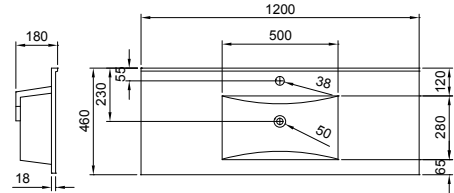
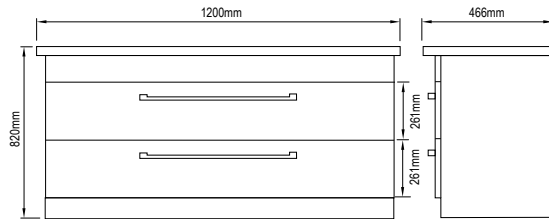
FLOOR STANDING UNITS - CONTINUED

For all internal draw measurements see page 11.

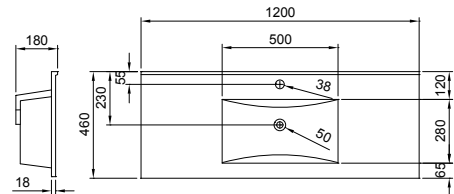
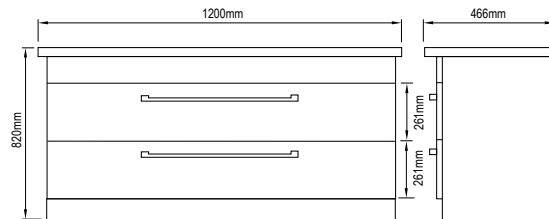
900mm
Two Drawer



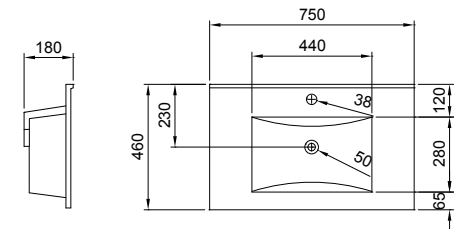
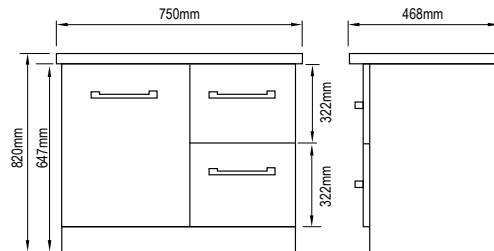
1200mm
Two Drawer



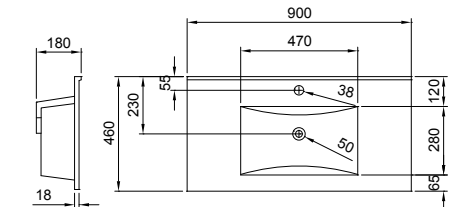
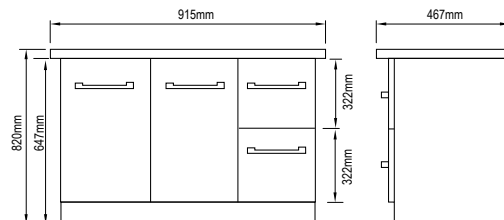
1200mm
Two Drawer
Double Bowl



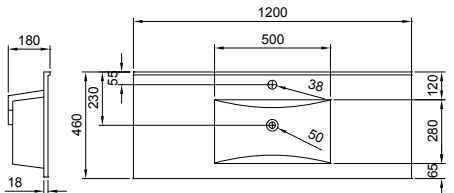
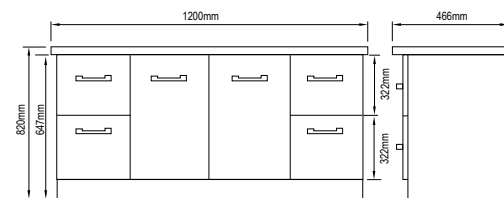
750mm
One Door
Two Drawers



900mm
Two Door
Two Drawers



1200mm
Two Door
Two Drawers



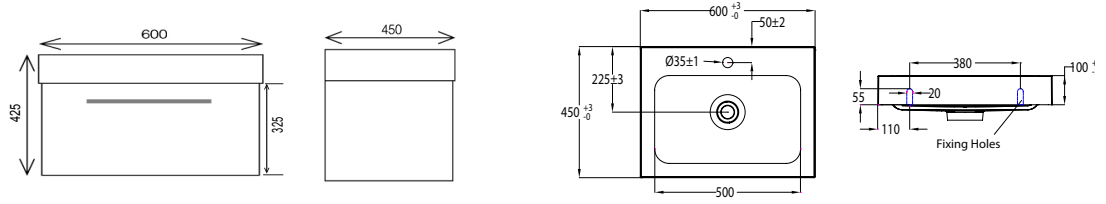
TESSA TECHNICAL DRAWINGS

BATHROOMWARE
FOR REAL KIWIS
Raymor

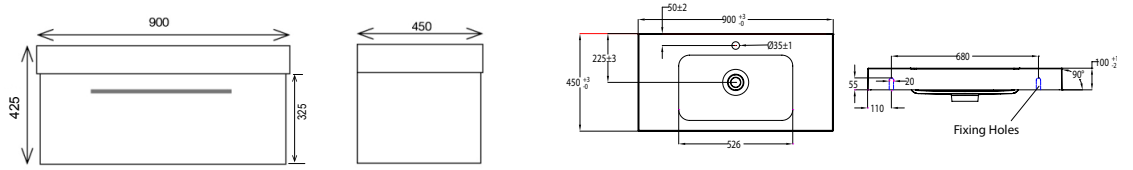
WALL HUNG UNITS

For all internal draw measurements see page 11.

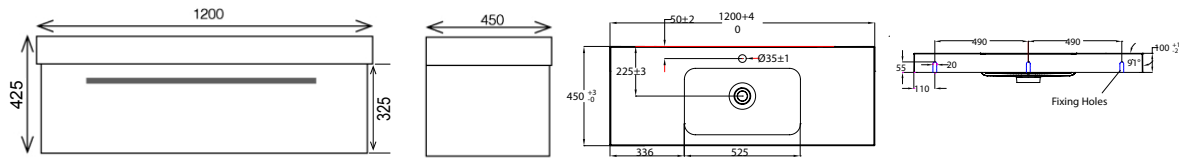
600mm
One Drawer



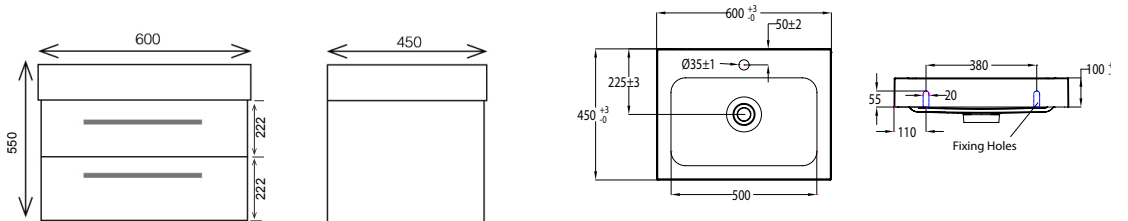
900mm
Two Drawer



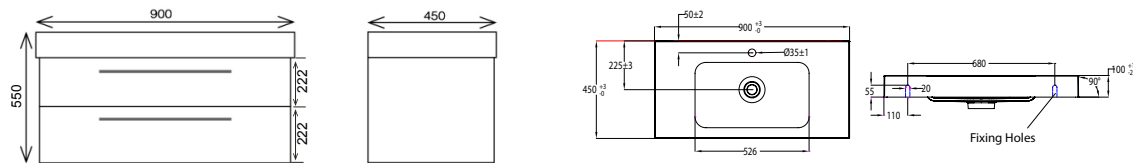
1200mm
One Drawer



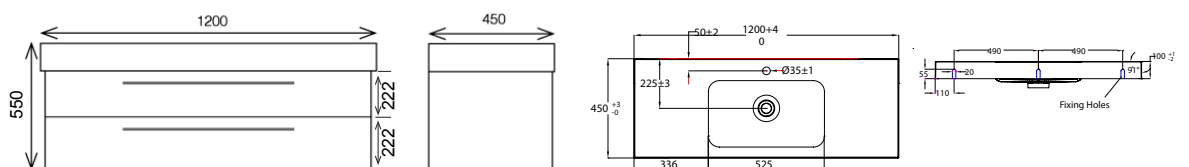
600mm
Two Drawer



900mm
Two Drawer



1200mm
Two Drawer



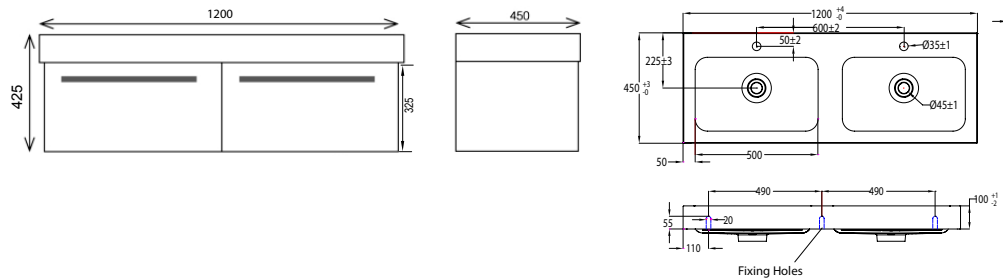
TESSA TECHNICAL DRAWINGS

BATHROOMWARE
FOR REAL KIWIS
Raymor

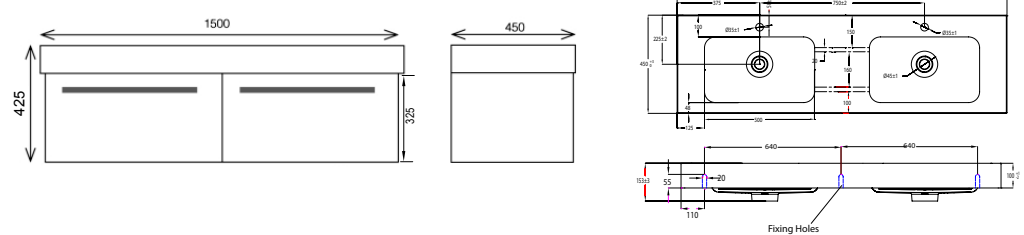
WALL HUNG UNITS - CONTINUED

For all internal draw measurements see page 11.

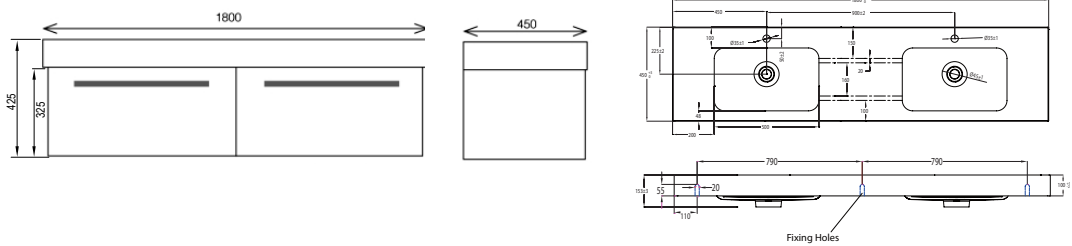
1200mm
Two Drawer
Side by Side
Double Bowl



1500mm
Two Drawer
Side by Side
Double Bowl



1800mm
Two Drawer
Side by Side
Double Bowl

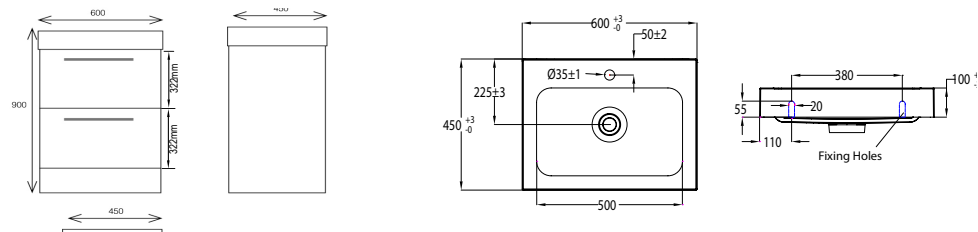


TESSA TECHNICAL DRAWINGS

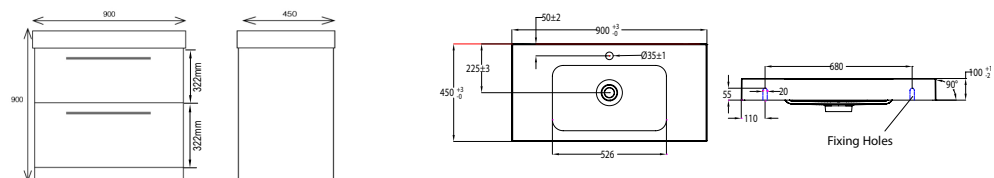
FLOOR STANDING UNITS

For all internal draw measurements see page 11.

600mm
Two Drawer



900mm
Two Drawer



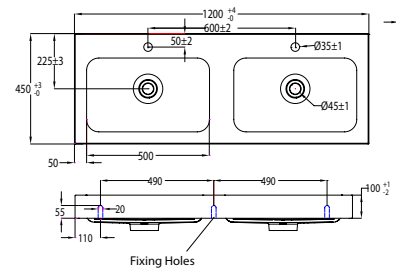
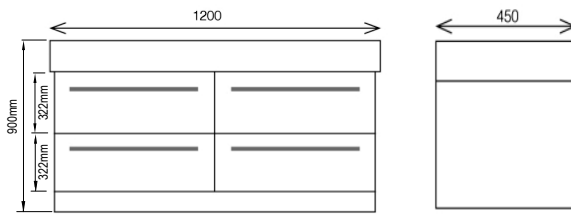
NB: All measurements are nominal and may change from time to time. If a project requires specific measurements, please confirm with manufacturer first.

TESSA TECHNICAL DRAWINGS

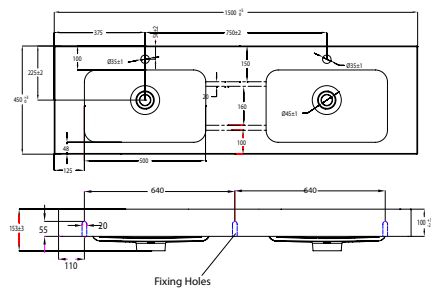
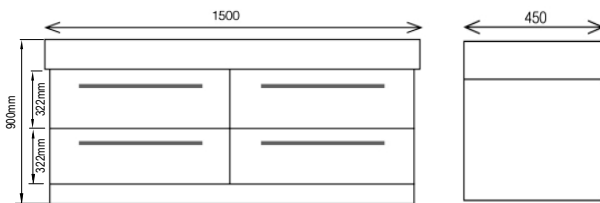
FLOOR STANDING UNITS - CONTINUED

For all internal draw measurements see page 11.

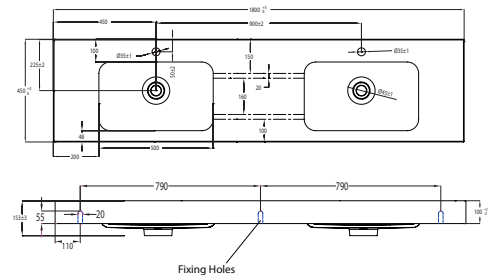
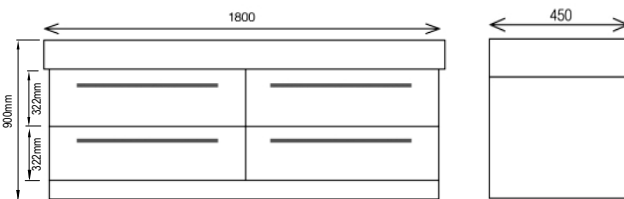
1200mm
4 Drawers
Double Bowl



1500mm
4 Drawers
Double Bowl



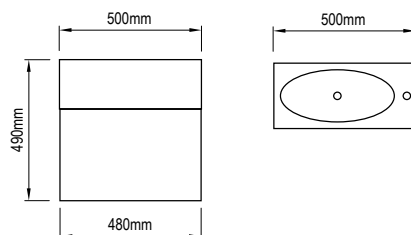
1800mm
4 Drawers
Double Bowl



FURNITURE TECHNICAL DRAWINGS

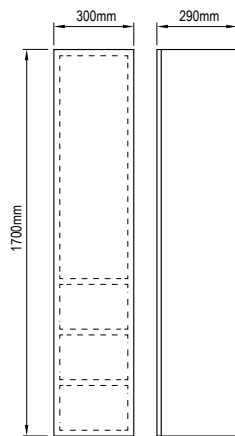
METRO VANITY

500mm
One Door



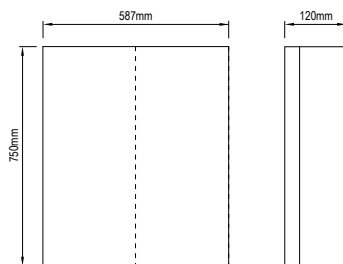
TALL CABINET

1700mm (H)
One Door
Two Drawers

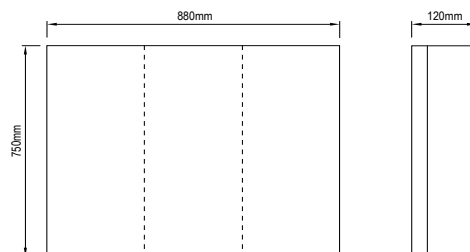


MIRROR CABINETS

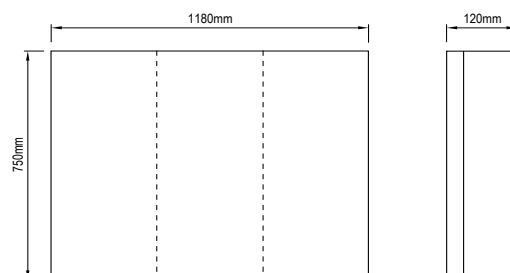
600mm
Two Door



900mm
Three Door



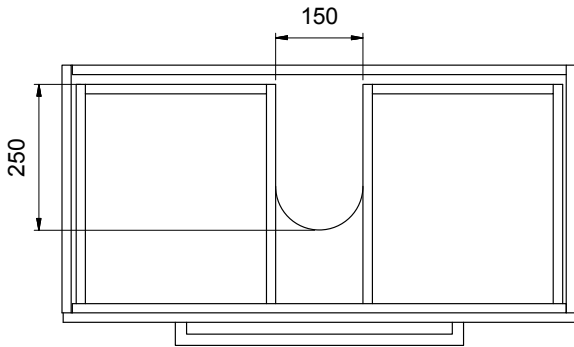
1200mm
Three Door



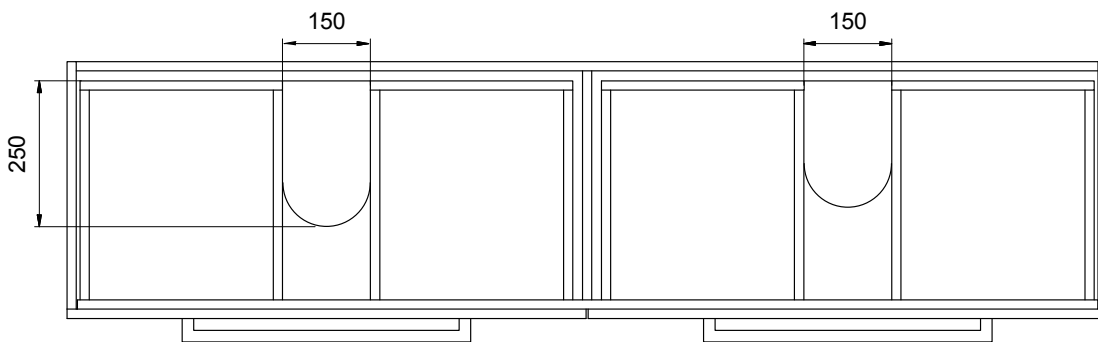
INTERNAL DRAWER DETAILS

For full drawer units the internal drawer measurements vary however, the standard measurements are below;

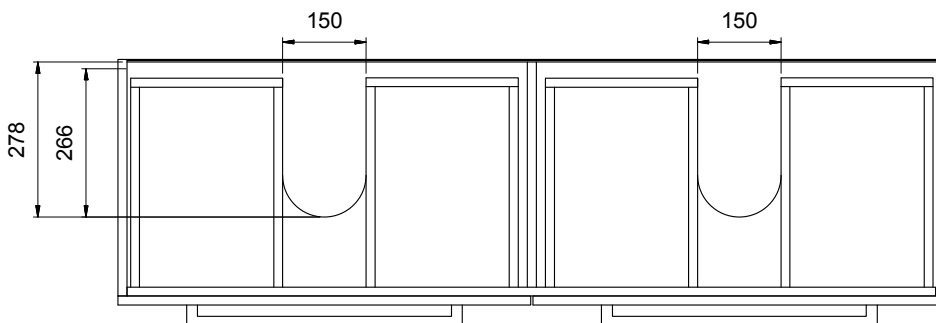
Single Bowl (All one drawer models)



Double Bowl (Two drawers side by side)



Double Bowl (Floor Standing Models)



- Floor Units: U Bends in both drawers
- Wall Units: In wall hung, 2 drawer models (over & under) U bend is in top drawer only.
- U Bend is always in the centre of the basin

BATHROOMWARE
FOR REAL KIWIS
Raymor
