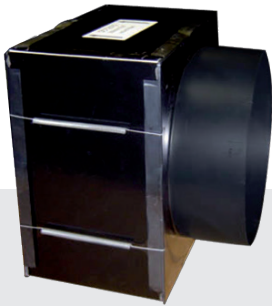


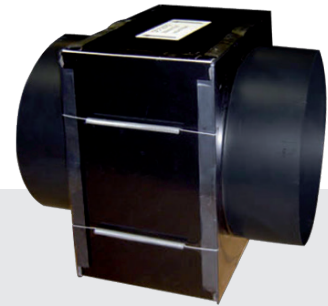
## Changing your SmartVent filter.

Simply release the four spring clips - there are two on both ends.  
Insert the new filter cartridge facing the cartridge as indicated by  
'DIRECTION' label  
Replace the spring clips.

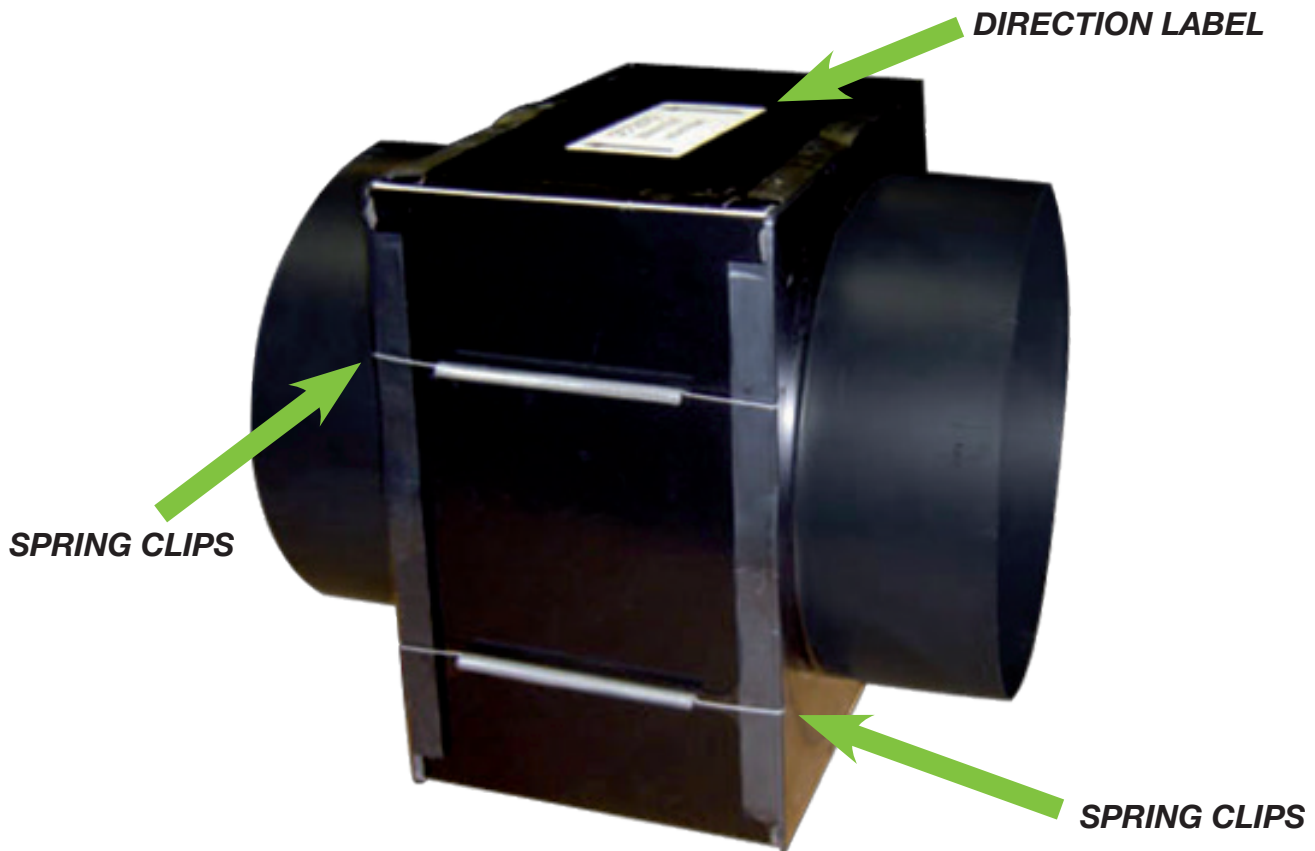
Take care not to damage/displace the ducting when releasing the spring clips.  
Ensure the duct tape remains intact around the spigot/s so no air pressure is lost.



Models - SV01 & SV02: only one end has spigot connected to ducting



Models - SV02S, SV04, SV04S, SV06 & SV06S - ducted both sides



Filter light flashing? Reset your SmartVent controller..  
see our FILTER RESET video on <https://www.youtube.com/watch?v=Gqz7rAjCDrl>