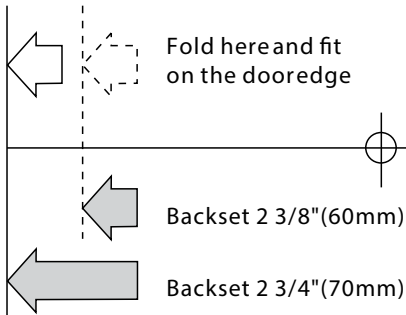




Regent Dummy Lever/Knob Installation Instructions



TOOLS NEEDED FOR NEW INSTALLATION

- * Pencil
- * Phillips Screwdriver
- * Tape Measure

DUMMY KNOB FOR DOORS THAT ONLY REQUIRE A PULL KNOB

Dummy knobs are designed specifically for doors that don't require a latching feature, such as French Doors, Closet Doors, Inactive doors, Bi fold doors, etc.

The following requirements should be observed to keep the finish of your knob lasting longer:

1. Do not install knob before doors are painted.
2. To avoid oxidation refrain from using cleansers or acid chemicals to polish your knobs.
3. Refrain from using abrasive or sharp-edged objects to scrub knob.

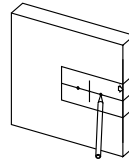
CUT ALONG DOTTED LINE TO REMOVE TEMPLATE

REPLACEMENT INSTALLATION

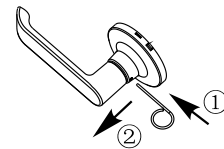
1. Remove dummy knob from packaging.
2. Place knob on door over old location. Follow illustration instructions 2. to 5.

NEW INSTALLATION

1. Use template. Draw center line for dummy knob across edge of door approximately 36" (914mm) above floor.
2. Align edge of template with edge of door after measuring for backset required. (see template) Match center line with center line drawn on door edge.
3. Mark by piercing 2 holes on door for locating screws.
4. Attach dummy to door by lining up holes in the knob with those pierced in the door. Insert screws and tighten.



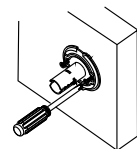
1. Mark door.



2. Inset push pin into hole to depress catch and remove lever.

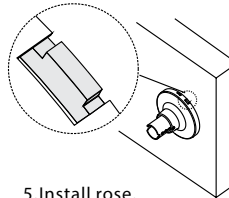


3. Remove rose.

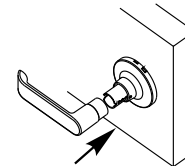


4. Install mounting screw.

Align cut with location bulge and push in rose.



5. Install rose.



6. Install Lever or knob.



Allegion (Australia) Pty Ltd
Phone 1800 098 094
Website www.allegion.com.au

Allegion (New Zealand) Limited
Phone 0800 477 869
Website www.allegion.co.nz