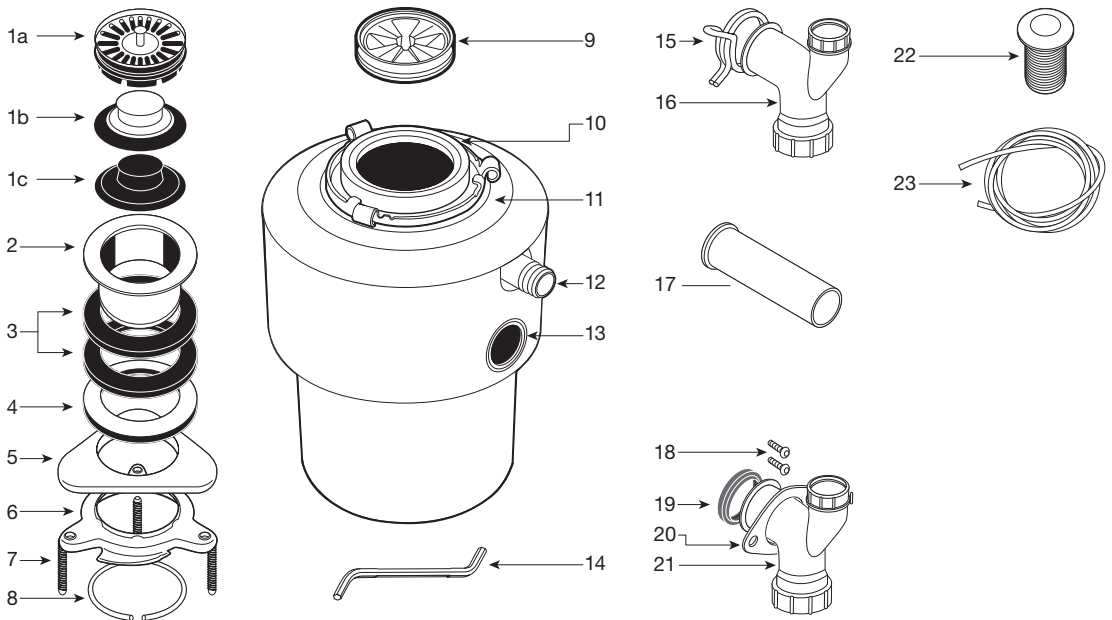




FOOD WASTE DISPOSER INSTALLATION AND USE MANUAL

English only (Australia and New Zealand)



78174 Rev C

www.insinkerator.com
©2018 InSinkErator, a business unit of Emerson Electric Co. All Rights Reserved.

220-240V, 50-60Hz
for Australia/New Zealand

FOOD WASTE DISPOSER INSTALLATION AND USE MANUAL

Food waste disposers can provide an environmentally responsible alternative to transporting food waste to landfills. And they can help reduce greenhouse gas emissions. At capable wastewater treatment plants, food waste can be recycled to produce renewable energy. Additionally, capable wastewater treatment plants can process food waste into fertilizer. (Check the plant in your area).

! Read through the entire installation manual before installing the disposer. Determine which of the tools, materials, and accessories you will need before you begin. Make sure you have all necessary disposer parts before installing the disposer.

NOTE: The Evolution models and Model BW5 grind much finer than any other disposer. For this reason you may notice that it takes a little longer to grind some food waste. Due to the Evolution 200 model's microprocessor, users will experience a fractional second delay when starting on all Evolution 200 models. This is completely normal.

NOTE: In Australia, all plumbing and electrical work **must** be completed by a qualified tradesperson. This product may require approval of the relevant regulator and/or the sewerage system operator. Disposer must be installed to AS/NZS 3500.2 standard requirements.

NOTE: Make sure that the installation of this appliance is allowed by the authorities.

TOOLS & MATERIALS YOU WILL NEED:

Slotted Screwdriver, Adjustable Pliers, Safety Glasses

TOOLS, MATERIALS, AND ACCESSORIES YOU MAY NEED:

Phillips Screwdriver, Drain Auger, 9.5 mm Electrical Clamp, 38 mm Drain Trap, 33 mm Hole Drill, Hammer, Hacksaw, Water Hose Clamp, Pipe Wrench, Copper Earth Wire, Dishwasher Drain Connection Kit, Electrical On/Off Switch, Drain Tube Extension

PARTS LIST (May vary depending on model)

MOUNTING ASSEMBLY

- 1a. Strainer Basket and Plug (Evolution Models, Model BW5)
- 1b. Stainless Steel Stopper (Models 66, BW4)
- 1c. Plastic Stopper (Model 56, 46, BW3, BW2)
2. Sink Flange
3. Rubber Gaskets (2)
4. Fiber Gasket (optional)
5. Backup Flange
6. Mounting Ring
7. Screws (3)
8. Snap Ring

DISPOSER

9. Sound Baffle (Evolution Models, Models 66, 56, BW5, BW4, BW3)
10. Mounting Gasket
11. Lower Mounting Ring
12. Dishwasher Inlet
13. Discharge Outlet
14. Wrenchette

DISCHARGE ASSEMBLY #1

- (Evolution Models, Model BW5)
15. Hose Clamp
 16. Elbow Discharge Tube (38 mm diameter)
 17. Straight Discharge Tube (optional)

DISCHARGE ASSEMBLY #2

- (Models 66, 56, 46, BW5, BW4, BW3, BW2)
17. Straight Discharge Tube (optional)
 18. Bolts (2) 13 mm 1/4-20 UNC
 19. Rubber Gasket
 20. Metal Flange
 21. Elbow Discharge Tube (38 mm diameter)

AIR SWITCH

- (Evolution models, Models 66, 56, BW5, BW4, BW3)
22. Air Switch Assembly
 23. Tube

! Read all safety messages before proceeding

SAFETY SYMBOLS

! WARNING

Warning indicates a potentially hazardous situation which, if not avoided, could result in death or serious injury.

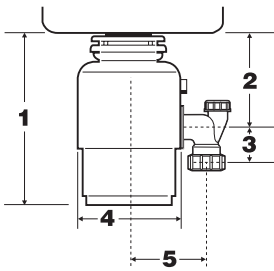
! CAUTION

Caution indicates a hazardous situation which, if not avoided, could result in minor or moderate injury.

NOTICE

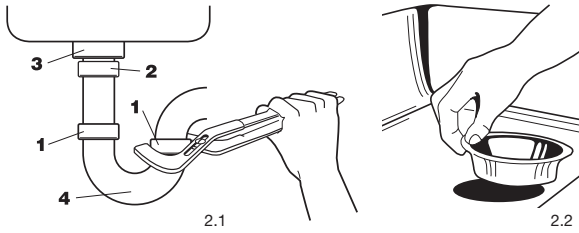
Notice is used to address practices not related to personal injury.

1



	1	2	3	4	5
(Evolution) 200-3B	33.0 cm	18.5 cm	6.4 cm	23.4 cm	16.8 cm
(Evolution) 100-3B	31.1 cm	17.1 cm	6.4 cm	22.2 cm	16.8 cm
Model 66-3, -10	31.8 cm	16.6 cm	6.5 cm	20.0 cm	13.1 cm
Model 56-3, -10	30.8 cm	16.6 cm	6.5 cm	19.4 cm	13.1 cm
Model 46-3, -10	30.8 cm	16.6 cm	6.5 cm	18.9 cm	13.1 cm
BW5 -10	31.1 cm	17.1 cm	6.4 cm	22.2 cm	16.8 cm
BW4 -10	31.8 cm	16.6 cm	6.5 cm	20.0 cm	13.1 cm
BW3 -10	30.8 cm	16.6 cm	6.5 cm	19.4 cm	13.1 cm
BW2 -10	30.8 cm	16.6 cm	6.5 cm	18.9 cm	13.1 cm

2



1

CHECK INSTALLATION DIMENSIONS

1. Disposer height.
2. Distance from bottom of sink bowl to centerline of discharge outlet. (Add 12 mm when stainless steel sink is used.)
3. Distance from centerline of the discharge outlet to end of discharge tube.
4. Disposer width.
5. Distance from disposer vertical centerline to centerline of trap connection.

NOTICE

To properly drain and prevent standing water in the disposer, the waste pipe entering the wall must be lower than the disposer discharge outlet.

2

DISCONNECT AND CLEAN SINK DRAIN

CAUTION

PERSONAL INJURY

Wearing safety glasses is recommended during the installation of the food waste disposer.

DISCONNECT SINK DRAIN

1. Loosen nuts (1) at top of trap (4) with pipe wrench. Remove trap. (See Figure 2.1)
2. Loosen nut (2) at top of extension pipe. Remove extension pipe.
3. Remove nut (3) at base of sink flange.
4. Push strainer up through sink hole and remove it. (See Figure 2.2)
5. Clean sink flange area of any putty or other debris.

NOTE: The sink hole may have to be enlarged to accept the disposer sink flange. Sink hole enlargement tools are available from your InSinkErator dealer.

CLEAN SINK DRAIN

Failure to clean sink waste pipe line may result in waste pipe blockage.

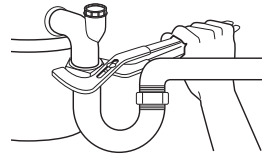
With drain auger, clear away all hardened waste material in horizontal drain line running from drain trap to main pipe.

When installing in new construction, cleaning the sink waste pipe line is not necessary.

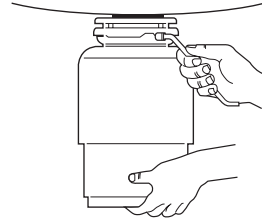
IF REPLACING AN EXISTING DISPOSER, CONTINUE WITH INSTRUCTION 3.

IF THIS IS A FIRST TIME INSTALLATION, SKIP AHEAD TO INSTRUCTION 4.

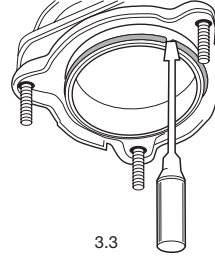
3



3.1



3.2



3.3



3.4

3

REMOVE EXISTING DISPOSER

CAUTION

PERSONAL INJURY

To avoid personal injury, do not position your head or body under disposer; the unit could fall during installation.

WARNING

ELECTRICAL SHOCK

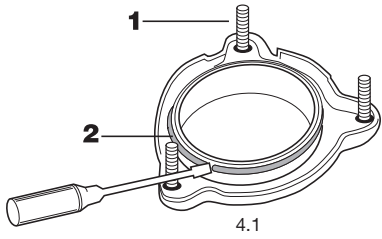
- To avoid electrical shock, disconnect power before removing any existing disposer. Turn off electrical power at fuse box or circuit breaker or if equipped unplug disposer electrical power plug from wall outlet.
- Improper connection of equipment earth (grounded) conductor can result in electric shock.

1. If your disposer is equipped with an electric plug and cord connection, unplug power plug from electrical wall outlet.

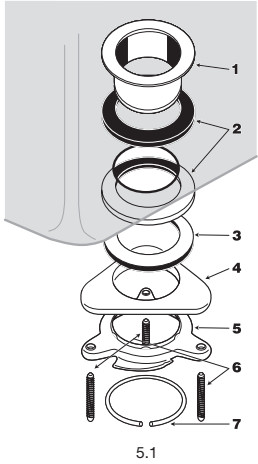
If your disposer is not equipped with an electrical plug and cord connection, contact an electrician to disconnect the old disposer plus install an earth (grounded) electrical wall outlet for the new disposer connection that must be compliant to all local electrical codes.

2. Disconnect drain trap from disposer waste discharge tube with adjustable pliers (see Figure 3.1). Also disconnect dishwasher drain connection, if applicable.
3. Support disposer with one hand and insert end of wrenchette or screwdriver into right side of one mounting lug on lower mounting ring (see Figure 3.2). Lift disposer slightly and remove from mounting by pushing or pulling wrenchette or screwdriver to left (disposer may be heavy; provide support).
4. Loosen three mounting screws, pry snap ring off with screwdriver, and remove old mounting assembly (see Figure 3.3). Some mounting assembly removal requires additional tools.
5. Push old sink flange up through sink hole (see Figure 3.4).

4



5



4

DISASSEMBLE NEW DISPOSER MOUNTING ASSEMBLY

1. Turn mounting assembly over (see Figure 4.1) and loosen three mounting screws (1) until you can access snap ring (2).
2. Use screwdriver to pry snap ring off of sink flange. Mounting assembly can now be disassembled.

5

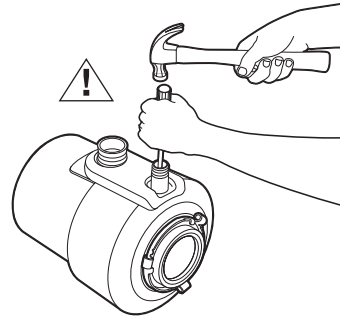
ATTACH UPPER MOUNTING ASSEMBLY TO SINK

Reference Figure 5.1.

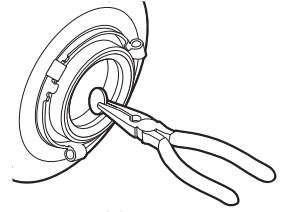
1. Place one of two rubber gaskets (2) under sink flange (1). Ensure sink hole area is clear of debris and place sink flange/gasket into sink hole. You may wish to place a weighted object in the sink to hold the sink flange in place. (Place a towel under object to prevent scratching.)
2. Working from under the sink, slip second rubber gasket (2), fiber gasket (optional) (3) and metal backup flange (4) (flat side up) over the sink flange. Holding second rubber gasket, fiber gasket (optional) and metal backup flange in place, slip mounting ring (5) over sink flange so it seats against backup flange.
3. With the rubber gasket, fiber gasket (optional), backup flange, and mounting ring tight against sink bottom, slide snap ring (7) onto sink flange until it pops into groove on flange.
4. Tighten three mounting screws (6) up to sink until mounting assembly is seated tightly and evenly against sink.

IF YOU ARE NOT CONNECTING A DISHWASHER TO DISPOSER, SKIP AHEAD TO INSTRUCTION 7.

6



6.1



6.2

6

REMOVAL OF KNOCKOUT PLUG FOR DISHWASHER CONNECTION

In Australia, removal of knockout plug does not apply. It is suggested that the dishwasher units be connected to IPLEX/ COROMA dishwasher spigot for maximum efficiency.

Wastewater from a dishwasher can be plumbed into the disposer through the inlet access on the upper part of the disposer. There is a plug on the inside of the inlet tube on all models. Once removed, the knockout plug cannot be replaced.

NOTICE

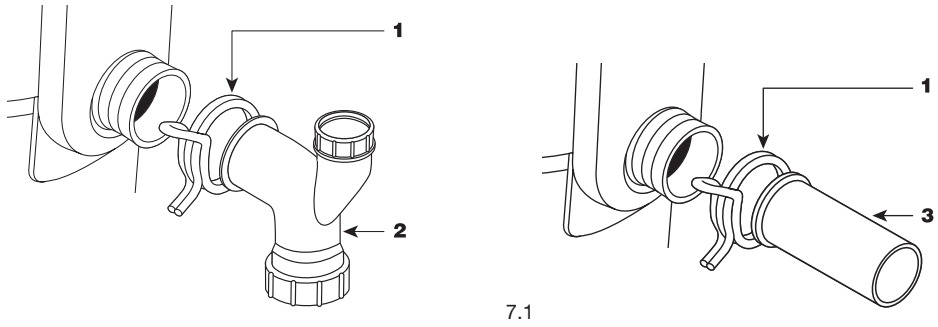
PROPERTY DAMAGE

If the dishwasher connection is made without removing the plug, the dishwasher may overflow. (Connections must comply with local plumbing codes.)

REMOVE KNOCKOUT PLUG

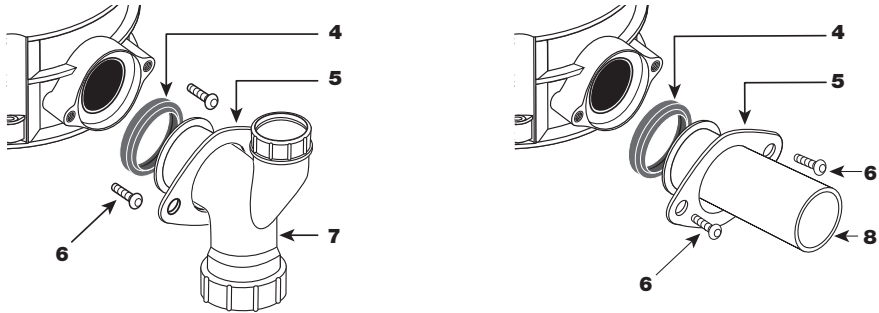
1. Lay disposer on its side and insert slotted screwdriver into dishwasher inlet so tip rests on outer edge of knockout plug.
2. Tap end of screwdriver handle with hammer until molded plug breaks loose. (See Figure 6.1)
3. Remove loose knockout plug from inside disposer. (See Figure 6.2)

EVOLUTION MODELS, BW5



7.1

66, 56, 46, BW4, BW3, BW2



7.2

7 ATTACH DISCHARGE TUBE TO WASTE DRAIN PIPE

NOTICE**PROPERTY DAMAGE**

- All Evolution 200, Evolution 100 and Model BW5 must be connected to the supplied tailpipe with the supplied spring type hose clamp (See Figure 7.1). In Australia it is required to use the supplied straight discharge tube with supplied spring type hose clamp. (See Figure 7.2) Failure to use the supplied tubes and spring type hose clamp will void the guarantee and possibly cause premature failure of the Anti-Vibration Tailpipe Mount™.
- Do not use plumber's putty on any other disposer connection. Do not use thread sealants or pipe dope. These may harm disposer and cause property damage.
- Regularly inspect disposer and plumbing fittings for water leaks, as water leaks can cause property damage. Manufacturer cannot be held responsible for property damage as a result of water leaks.
- To properly drain and prevent standing water in the disposer when utilizing a straight pipe discharge tube, the tube connection opposite the disposer outlet must be lower – not higher – than the disposer outlet.

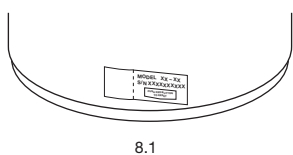
DISCHARGE TUBE INSTALLATION**(EVOLUTION 200, EVOLUTION 100 and Model BW5)**

Place discharge tube (2 or 3) into Anti-Vibration Tailpipe Mount™. Secure with spring type hose clamp (1). (See Figure 7.1)

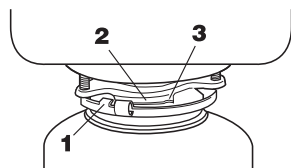
DISCHARGE TUBE INSTALLATION**(MODELS 66, 56, 46, BW4, BW3, BW2)**

1. Place metal flange (5) over discharge tube (7 or 8). Insert rubber gasket (4) with gasket lip facing the metal flange into discharge tube. (See Figure 7.2)
2. Secure metal flange and discharge tube to disposer with two 13 mm bolts (6).

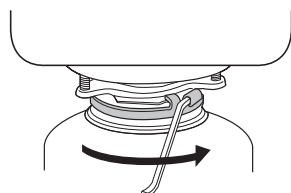
8



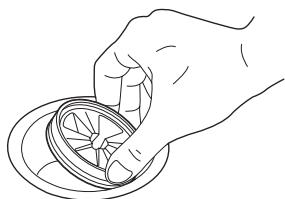
8.1



8.2



8.3



8.4

8 CONNECT DISPOSER TO MOUNTING ASSEMBLY

⚠ CAUTION

PERSONAL INJURY

To avoid personal injury, do not position your head or body under disposer; the unit could fall during installation.

Clear any objects from inside the disposer grind chamber before mounting the disposer to the sink.

1. This product must be installed so that the red motor reset button, power supply cord plug and earth ground receptacle are readily accessible. Keep this space clear of all objects.
2. Prior to connecting disposer to mounting assembly, detach the perforated portion of the specification label found at the base of the disposer, and set aside for Instruction 9. (See Figure 8.1)
3. Lift disposer, insert top end (mounting gasket) into mounting assembly. Position disposer with three mounting tabs (1) aligned in position to slide over mounting tracks (2) (see Figure 8.2).
4. Turn lower mounting ring to right (with wrenchette or adjustable pliers) until mounting tabs lock over ridges (3) on mounting ring tracks (see Figure 8.3).

NOTICE

Make sure all three mounting tabs are locked over ridges.

Disposer will now hang by itself.

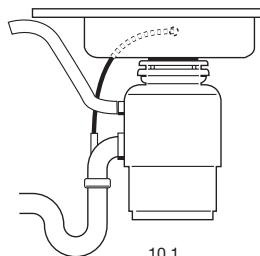
5. For Evolution Models, Models 66, BW5 and BW4, Insert sound baffle into sink opening, with flat side upward. (See Figure 8.4)
6. Rotate disposer so that discharge tube is aligned with drain trap. (To prevent leaks, do not pull or bend discharge tube to drain trap.) If discharge tube is too short, you can purchase an extension from hardware store. (Disposer must remain in vertical position to prevent vibration.)
7. Place nut, then ferrule on discharge tube and tighten on drain trap. (If you have a double sink, use separate drain traps for both sides of sink.)
8. Ensure lower mounting ring is still securely locked over ridges on mounting flange. (See Figure 8.3)

9

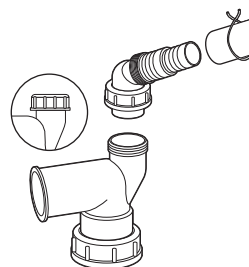
MODEL XX - XX
S/N XXXXXXXXXXXX

9.1

10



10.1



10.2

9 ATTACH SPECIFICATION LABEL

This specification label contains important information the owner will need to know in the event service is required. Place the portion of the specification label removed in Step 8.1 somewhere easily visible to the user.

IF YOU ARE NOT CONNECTING A DISHWASHER TO DISPOSER, SKIP AHEAD TO INSTRUCTION 11.

10 DISHWASHER ATTACHMENT AND OVERFLOW CONNECTION

In Australia, dishwasher attachment and over flow connection does not apply. It is suggested that the dishwasher units be connected to IPLEX/ COROMA dishwasher spigot for maximum efficiency.

If you have a sink overflow, it should be connected to the overflow inlet on the tailpipe (see Figure 10.1).

To connect the overflow, remove the plug in the tailpipe by unscrewing the overflow connector cap (see Figure 10.2).

FOR NEW ZEALAND ONLY Connect the hose from the dishwasher to the disposer inlet using a dishwasher drain connection kit with a hose clamp (not provided).

NOTE: The straight discharge tube for use in Australia does not have an overflow connection tube.