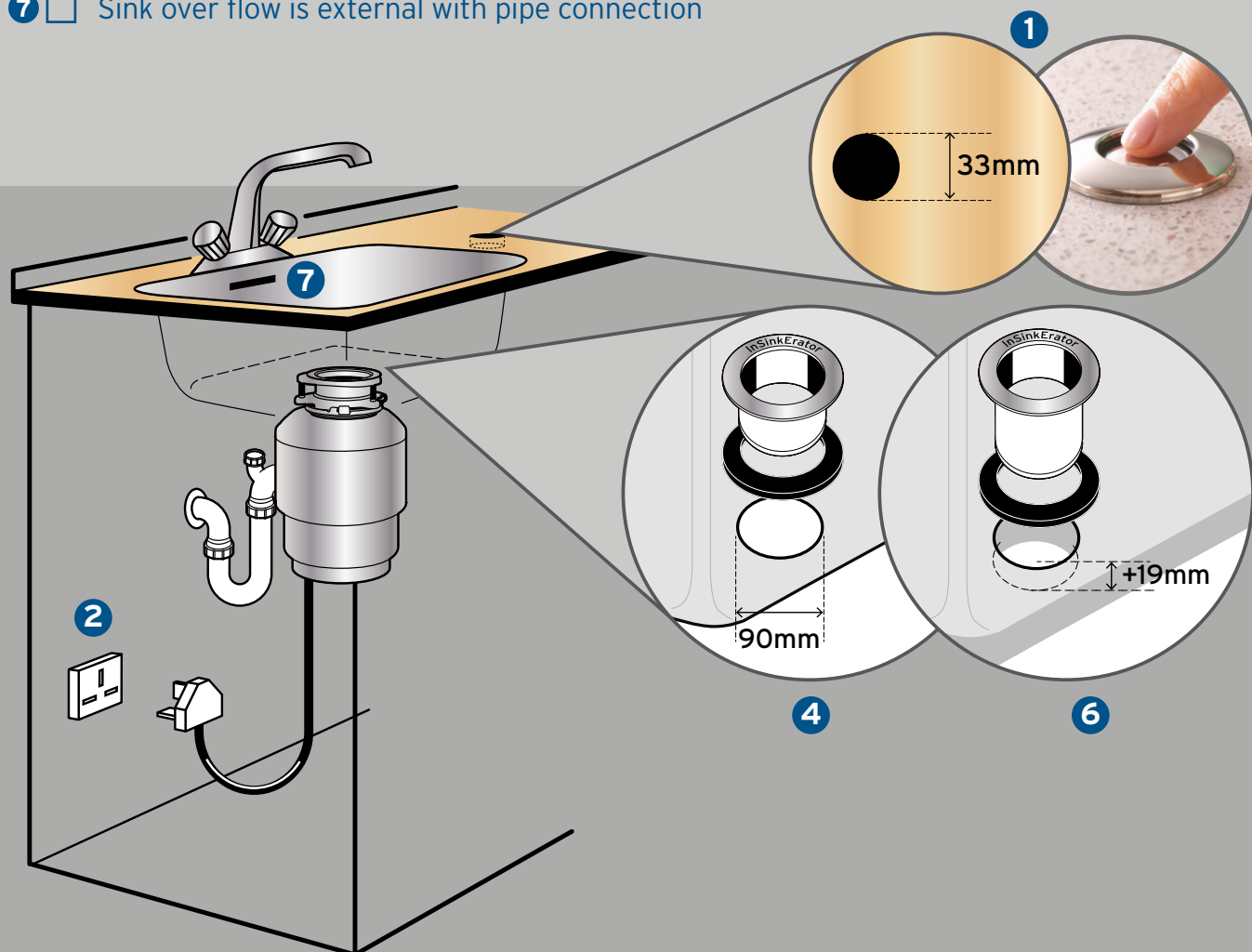


# Food Waste Disposer Installation criteria



## Customer Criteria for Food Waste Disposer

- 1 ☐ Any non wood work surface must have a pre-drilled hole (33mm for an air switch)
- 2 ☐ 13 amp power socket must be within 600mm of install area and accessible
- 3 ☐ Space for product (check website for dimensions)
- 4 ☐ Sink hole must be 90mm
- 5 ☐ You may lose the shelf in the cupboard
- 6 ☐ Sinks greater than 19mm thick will require an extended flange. Available on our online shop.
- 7 ☐ Sink over flow is external with pipe connection



The appliance will be connected to existing services only. Should a hole not be pre-drilled in any work surface other than wood, installation will not be possible. If the criteria above has not been met on the arrival of the service agent, the customer will have to pay a call out charge of £65 to the service agent.

Please contact us if you are unsure  
of any of the above on **01923 375 347**