

INSTALLATION INSTRUCTIONS



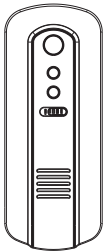
DÉCOR CHIME Wireless Digital Door Chime Model No: CHM10157, CHM0158

Please install and operate this product according to the following instructions.

'Receiver' means the Indoor Chime unit.

'Transmitter' means the Exterior Door Press.

CONTENTS



Receiver x1



Transmitter x1
Include white address
label insert



Click-in base
of Receiver x1



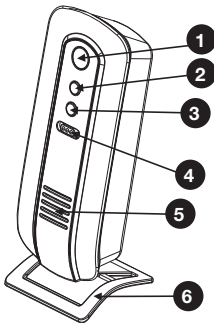
CR2032 x1



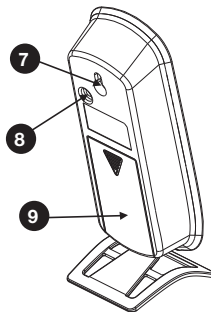
Instruction Manual x1

NAMES FOR PARTS

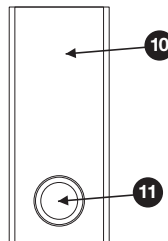
Receiver front side



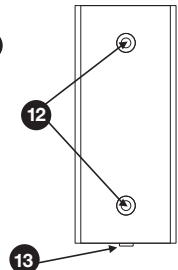
Receiver back side



Transmitter front cover outside



Transmitter back cover outside



- (1) LED Indicator
- (2) Melody Selector
- (3) Volume Button
- (4) Sound-and-Flash Switch
- (5) Speaker

- (6) Click-in base of Receiver
- (7) Hanging Hole
- (8) Auto-learning Code Button
- (9) Battery Cover

- (10) Nameplate
- (11) Push Button
- (12) Standby holes for screws
- (13) Opening Tab

SELECTING YOUR MOUNTING LOCATIONS

Before fixing the products, check your desired locations can communicate first. The product is rated to operating up to a range of 80 metres in free air. The operating range will be reduced if the signal is transmitted through a number of walls or ceilings.

NOTE: Common barriers to avoid completely include mounting to any metal surface or UPVC door frames. Avoid positioning above heat sources such as radiators, or in damp areas such as a kitchen or bathroom. Do not expose either unit directly to rain or immerse in water. Do not locate either unit close to fireplace or expose to high temperatures.

Note the Receiver is suitable for Indoor use only. The Transmitter is rated for sheltered exterior locations only, not where direct rain may fall.

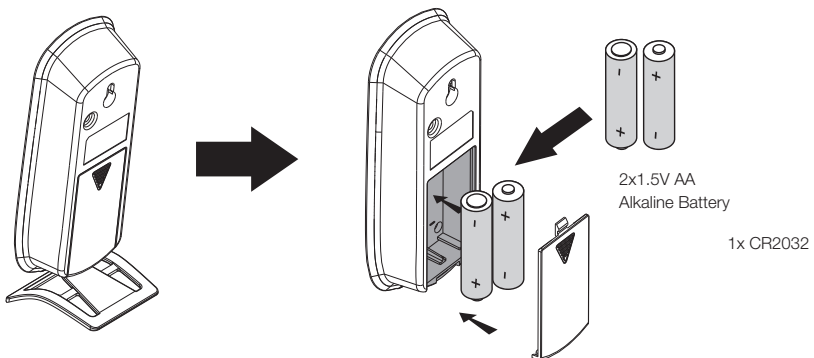
NOTES BEFORE INSTALLATION

1. Before installation and operation, you will require a drill, a cross-headed screwdriver, a flat head screwdriver, 2xAA 1.5V size batteries, fixing screws and wall plugs.
2. Avoid positioning the Transmitter on metal frames.
3. Avoid positioning above heat sources such as radiators, or in damp areas such as a kitchen or bathroom.

INSTALLING THE BATTERIES

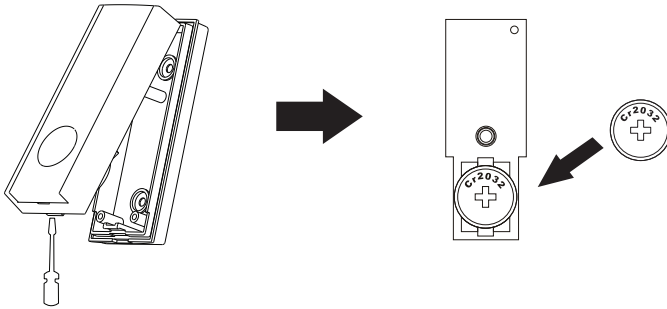
Receiver Unit

Remove the rear cover of the Receiver, and insert 2 x AA Alkaline batteries (not included). Ensure polarity of batteries on installation.



Transmitter Unit

- Using a flat screwdriver, insert into the small slot at the base of the unit to facilitate this. Remove the circuit board (it may be secured with a small screw). Insert the supplied CR2032 into the battery holder, ensuring polarity of battery on installation (positive facing outwards). Reinsert the circuit board with screw in place.
- Close the Transmitter enclosure by setting the fastening tab of the top cover into the slot on the base. Then carefully press the top cover onto the base. It should click neatly into place, ensuring the waterproof rating of the Transmitter.



SETUP THE AUTO-LEARNING CODE

What is Auto-learning Code?

The Transmitter sends a wireless signal to the Receiver. The Receiver would automatically register and memorize the signal as an operation code. So the Transmitter can work with the Receiver by this code.

Auto-learning Code Set Up

1. Operation for 1 Transmitter and 1 Receiver

- (A) After battery installation on both Transmitter and Receiver, press the Transmitter once to generate a new operation code. The Receiver will sound, which indicates that a new operation code is registered and memorized.
- (B) Alternatively, press the auto-learning code button on the back of the Receiver once and it will be ready to receive signal sent from the Transmitter. Press the button of the Transmitter, the Receiver will sound to indicate that new operation code is registered and memorized.

Expanding your system or up to 4 Receivers to a single Transmitter

- You can pair up to 4 Receivers to a single Transmitter, by repeating Step B above for each Transmitter (one at a time).
- Please note these items are only sold in New Zealand/Australia as a complete kit of both Transmitter and Receiver together. These are not available for purchase as individual items.
- Pairing multiple Transmitters to a single Receiver, the Transmitter will ring the same melody only.
- Pairing multiple Receivers to a single Transmitter, select different melodies is allowable when pairing.

NOTE: Interference from another similar door chime operating nearby (For example, Receiver sounds for no reason):

- Remove the batteries from the Receiver and rest for 60 seconds. This will erase the memory. Insert the batteries again, and then the Transmitter and the Receiver are ready for the new code registration. Repeat Step B above to re-pair.
- It is important to remember that when you replace the run-out batteries with new ones that you will need to follow the same procedure of the auto-learning code set-up as above.

AFFIXING THE PRODUCTS

- The Receiver can be mounted to a wall on a screw, or fitted with the supplied click in base for free standing.
- Affix the door press to a smooth surface with double sided tape and screws as required. Before you drill any hole in the wall, please make sure there are not cables or pipes that may be accidentally damaged.

There is a nameplate position on the Transmitter. User needs to remove the nameplate cover and put a suitable size label with their name or other information. Then reassemble.

SELECTING YOUR PERSONAL SETTINGS

There are 36 different melodies to select from. Scroll through these using the top button on the Receiver to select your preferred melody. This can be changed at any time.

There are 3 volume settings to select from. Scroll through these using the bottom button on the Receiver for the appropriate volume for your location. This can be changed at any time.

You can select between Melody only, Strobe only (useful for hard of hearing persons or locations) or select both functions together. These are set using the Slide button on the Receiver.

Melody only	LEFT position
Strobe only	MIDDLE position
Melody & Strobe	RIGHT position

The doorbell contains 36 melodies:

- | | |
|-----------------------------------|------------------------------|
| 1. Ding dong(2 times) | 19. Cuckoo Waltz |
| 2. Westminster Bell | 20. My Old Kentucky Home |
| 3. To Alice | 21. Merry Christmas |
| 4. Tap-Tap | 22. Sonata Two |
| 5. Rain Drops | 23. The Blue Danube |
| 6. Romance de Amor | 24. Susanna |
| 7. Sonata One | 25. William Tell Overture |
| 8. Lullaby | 26. Radetzky March |
| 9. Memory | 27. Turkey in the Straw |
| 10. Jingle Bells | 28. Spanish Lady |
| 11. Memories of Childhood | 29. Mariage Dha Amour |
| 12. Turkish March | 30. Doraemon |
| 13. The First Noel | 31. Picnic |
| 14. Santa Claus is Coming to Town | 32. Cancan Remix |
| 15. Moon River | 33. Auld Lang Syne |
| 16. Yellow Rose of Germany Golden | 34. Happy Birthday |
| 17. Minuet | 35. Greensleeves |
| 18. Cuckoo | 36. The Star-Spangled Banner |

OPERATION

Press the push button on the Transmitter unit once, it sends a wireless signal to the Receiver which will play the selected melody. The sound will stop as soon as the melody ends. For repeat sound, press the button again. Holding the Transmitter button IN will NOT repeat the sound.

USER HINTS

If the Receiver does not sound, please check the following:

- Flat batteries in either Transmitter or Receivers-change the batteries.
- Wrong battery polarity in either Transmitter or Receivers-reinsert the batteries.
- Units are out of range-relocate the Receiver within the operation range.
- If leaving the chime unused for long periods, remove the battery from compartment to prevent leakage.
- Dispose of old batteries in accordance with the relevant legislation.

TECHNICAL SPECIFICATIONS

Receiver

Operating Frequency	433.92 MHz
Operating Range (Free Air)	Up to 80 metres
Battery (not included)	2 x AA 1.5V Alkaline batteries
Sound dB(A)	Up to 75dB(A)
Strobe Light	Yes

Transmitter

Battery (included)	1 x CR2032 Lithium battery
Enclosure rating	IP44 - protection from light rain and splashing
Operating Temperature	-20°C to +40°C

ELECTRICAL COMPLIANCE

This product complies to all relevant NZ/AU compliance standards.

An SDOC (supplier compliance declaration) is available on www.simx.co.nz

Type the product code into Search on the home page, this takes you to the item product page, a download link is located below the product details on that page.

IMPORTANT: PLEASE KEEP THESE INSTRUCTIONS FOR FUTURE REFERENCE WHEN REPLACING BATTERIES



Distributed by: Simx Limited
Ph: +64 9 259 1660 | Technical Support Ph: +64 9 259 1662
Email: sales@simx.co.nz | www.simx.co.nz
Simx reserves the right to alter technical specifications without prior warning

PUB1336 2112